

# SECURITIES AND EXCHANGE COMMISSION

## FORM 424B3

Prospectus filed pursuant to Rule 424(b)(3)

Filing Date: **2011-08-18**  
SEC Accession No. [0001193125-11-225937](#)

([HTML Version](#) on [secdatabase.com](#))

### FILER

#### **BGC Partners, Inc.**

CIK: **1094831** | IRS No.: **134063515** | State of Incorp.: **DE** | Fiscal Year End: **1231**  
Type: **424B3** | Act: **33** | File No.: **333-175034** | Film No.: **111043730**  
SIC: **6200** Security & commodity brokers, dealers, exchanges & services

Mailing Address  
499 PARK AVENUE  
NEW YORK NY 10022

Business Address  
499 PARK AVENUE  
NEW YORK NY 10022  
212-610-2200

Prospectus

**BGC PARTNERS, INC.**



**9,440,317 Shares of Class A Common Stock**

This prospectus relates to 8,996,631 shares of Class A common stock, par value \$0.01 per share, which we refer to as our “Class A common stock,” of BGC Partners, Inc., which we refer to as “BGC Partners,” “we,” “us,” or the “Company,” that have been or may be distributed pursuant to distribution rights that were granted by Cantor Fitzgerald, L.P., which we refer to as “Cantor,” on April 1, 2008 to certain current and former Cantor partners in connection with the separation of the BGC businesses from Cantor and the merger of BGC Partners, LLC with eSpeed, Inc., or that may be donated by Cantor to charitable organizations. Of these 8,996,631 shares of Class A common stock, an aggregate of 3,315,728 shares have already been distributed by Cantor to partners, and the remaining 5,680,903 shares may in the future be distributed by Cantor to partners or donated by Cantor to charitable organizations. The 3,315,728 shares already distributed by Cantor to partners may be offered and sold through this prospectus by such distributee partners, and the remaining 5,680,903 shares may be offered and sold under the registration statement of which this prospectus forms a part (1) either by Cantor at the direction and for the account of the partners holding the related distribution rights, or by such partners as distributees of the shares from Cantor or the partners’ respective pledgees, donees, transferees or other successors in interest, which we refer to collectively as the “Individual Selling Stockholders,” or (2) by such charitable organizations, or their pledgees, donees, transferees or other successors in interest, which we refer to collectively as the “Charitable Organizations.”

This prospectus also relates to 443,686 shares of our Class A common stock that were donated by us on May 9, 2011 to The Cantor Fitzgerald Relief Fund. These 443,686 shares may be offered and sold through this prospectus by The Cantor Fitzgerald Relief Fund or by its pledgees, donees, transferees or other successors in interest, which we refer to collectively as the “Relief Fund.” References in this prospectus to the “Selling Stockholders” include Cantor, the Individual Selling Stockholders, the Charitable Organizations and the Relief Fund. Although nominally listed as a Selling Stockholder, Cantor will not be selling any shares for its own account under the registration statement.

The primary purpose of the registration statement is to meet the expectations of the Individual Selling Stockholders that they will receive registered shares of our Class A common stock distributed by Cantor to them pursuant to their distribution rights. Additional purposes of this registration statement are to enable (1) the Charitable Organizations to offer and sell any shares of Class A common stock donated by Cantor to them and (2) the Relief Fund to offer and sell the shares of Class A common stock donated by us to The Cantor Fitzgerald Relief Fund on May 9, 2011.

The Selling Stockholders may offer the shares of our Class A common stock included in this prospectus from time to time and sell shares in amounts, at prices and on terms to be determined at the time of the offering. The Selling Stockholders may sell the shares to or through one or more underwriters, dealers or agents or directly to purchasers on a delayed or continuous basis.

We do not expect to receive any of the proceeds from the sale of the shares by the Selling Stockholders. The Individual Selling Stockholders who are current or former partners of Cantor will be expected to use the proceeds from such sales to repay any outstanding loans to, or credit enhanced by, Cantor before receipt of any net proceeds.

We have agreed to pay the expenses of the registration of the shares of our Class A common stock offered and sold under the registration statement by the Selling Stockholders. The Selling Stockholders will pay any underwriting discounts, commissions and transfer taxes applicable to the shares of Class A common stock sold by them.

Our Class A common stock is traded on the Nasdaq Global Select Market under the symbol “BGCP.” On August 17, 2011, the last reported sales price of our Class A common stock was \$6.70 per share.

**An investment in shares of our Class A common stock involves risks. See the “[Risk Factors](#)” section of our latest Annual Report on Form 10-K filed with the Securities and Exchange Commission, which we refer to as the “SEC,” and any updates to those risk factors or new risk factors contained in our subsequent Quarterly Reports on Form 10-Q and Current Reports on Form 8-K filed with the SEC, all of which we incorporate by reference herein.**

**Neither the Securities and Exchange Commission nor any state securities commission has approved or disapproved of these securities or determined if this prospectus is truthful or complete. Any representation to the contrary is a criminal offense.**

The date of this prospectus is August 18, 2011.

## Table of Contents

### TABLE OF CONTENTS

	<u>Page</u>
<a href="#">About This Prospectus</a>	ii
<a href="#">Forward-Looking Statements</a>	iii
<a href="#">Certain Defined Terms</a>	v
<a href="#">Summary</a>	1
<a href="#">Risk Factors</a>	5
<a href="#">Use of Proceeds</a>	6
<a href="#">Dividend Policy</a>	7
<a href="#">Price Range of Class A Common Stock</a>	9
<a href="#">Selling Stockholders</a>	10
<a href="#">Description of Capital Stock</a>	19
<a href="#">Certain U.S. Federal Tax Considerations for Non-U.S. Holders of Class A Common Stock</a>	23
<a href="#">Plan of Distribution</a>	26
<a href="#">Legal Matters</a>	29
<a href="#">Experts</a>	29
<a href="#">Where You Can Find More Information</a>	30
<a href="#">Documents Incorporated by Reference</a>	30

**You should rely only on the information provided in this prospectus and the information incorporated by reference into this prospectus. We have not authorized anyone to provide you with different information. We are not making an offer of shares of our Class A common stock in any jurisdiction where the offer is not permitted. You should not assume that the information in this prospectus or any documents incorporated by reference into this prospectus is accurate as of any date other than the date of the applicable document. Since the respective dates of this prospectus and the documents incorporated by reference into this prospectus, our businesses, financial condition, results of operations, cash flows and prospects might have changed.**

## ABOUT THIS PROSPECTUS

This prospectus is part of a registration statement that we filed with the SEC using a shelf registration process. Under the shelf registration process, the Selling Stockholders may offer and sell shares of our Class A common stock as described in this prospectus in one or more offerings. Prospectus supplements may add, update, substitute or change the information contained in this prospectus, including the identities of the Selling Stockholders and the number of shares registered on their behalf. You should carefully read this prospectus, together with the additional information described below.

This prospectus and the documents incorporated by reference into this prospectus include important information about us, our Class A common stock, this offering, and other information you should know before investing. You should read this prospectus together with the additional information described under the headings “Where You Can Find More Information” and “Documents Incorporated by Reference” before investing in shares of Class A common stock.

## FORWARD-LOOKING STATEMENTS

This prospectus and the documents incorporated by reference into this prospectus contain forward-looking statements within the meaning of Section 27A of the Securities Act of 1933, as amended, which we refer to as the “Securities Act,” and Section 21E of the Securities Exchange Act of 1934, as amended, which we refer to as the “Exchange Act.” Such statements are based upon current expectations that involve risks and uncertainties. Any statements contained herein or in documents incorporated by reference that are not statements of historical fact may be deemed to be forward-looking statements. For example, words such as “may,” “will,” “should,” “estimates,” “predicts,” “potential,” “continue,” “strategy,” “believes,” “anticipates,” “plans,” “expects,” “intends” and similar expressions are intended to identify forward-looking statements.

Our actual results and the outcome and timing of certain events may differ significantly from the expectations discussed in the forward-looking statements. Factors that might cause or contribute to such a discrepancy include, but are not limited to:

- pricing and commissions and market position with respect to any of our products and services and those of our competitors;
- the effect of industry concentration and reorganization, reduction of customers and consolidation;
- liquidity, regulatory and clearing capital requirements and the impact of credit market events;
- market conditions, including trading volume and volatility, and potential deterioration of the equity and debt capital markets;
- our relationships with Cantor and its affiliates, including Cantor Fitzgerald & Co., which we refer to as “CF&Co,” any related conflicts of interest, competition for and retention of brokers and other managers and key employees, support for liquidity and capital and other relationships, including Cantor’s holding of our 8.75% convertible notes, CF&Co’s acting as our sales agent under our controlled equity or other future offerings, and CF&Co’s acting as our financial advisor in connection with one or more business combination or other transactions;
- economic or geopolitical conditions or uncertainties;
- extensive regulation of our businesses, changes in regulations relating to the financial services and other industries, and risks relating to compliance matters, including regulatory examinations, inspections, investigations and enforcement actions, and any resulting costs, fines, penalties, sanctions, enhanced oversight, increased financial and capital requirements, and changes to or restrictions or limitations on specific activities, operations, compensatory arrangements, and growth opportunities, including acquisitions, hiring, and new business, products, or services;
- factors related to specific transactions or series of transactions, including credit, performance and unmatched principal risk, counterparty failure, and the impact of fraud and unauthorized trading;
- costs and expenses of developing, maintaining and protecting our intellectual property, as well as employment and other litigation and their related costs, including judgments or settlements paid or received;
- certain financial risks, including the possibility of future losses and negative cash flows from operations, potential liquidity and other risks relating to our ability to obtain financing or refinancing of existing debt on terms acceptable to us, if at all, and risks of the resulting leverage, including potentially causing a reduction in our credit ratings and/or the associated outlooks given by the rating agencies to those credit ratings, as well as interest and currency rate fluctuations;
- our ability to enter new markets or develop new products, trading desks, marketplaces or services and to induce customers to use these products, trading desks, marketplaces or services and to secure and maintain market share;
- our ability to enter into marketing and strategic alliances and business combination or other transactions in the financial services and other industries, including acquisitions, dispositions, reorganizations, partnering opportunities and joint ventures, and the integration of any completed transaction;
- our ability to hire and retain personnel;

## Table of Contents

our ability to expand the use of technology for hybrid and fully electronic trading;

our ability to effectively manage any growth that may be achieved, while ensuring compliance with all applicable regulatory requirements;

our ability to identify and remediate any material weaknesses in our internal controls that could affect our ability to prepare financial statements and reports in a timely manner, control our policies, procedures, operations and assets, and assess and manage our operational, regulatory, and financial risks;

the effectiveness of our risk management policies and procedures, and the impact of unexpected market moves and similar events;

the fact that the prices at which shares of our Class A common stock are sold in one or more of our controlled equity offerings or in other offerings or other transactions may vary significantly, and purchasers of shares in such offerings or transactions, as well as existing stockholders, may suffer significant dilution if the price they paid for their shares is higher than the price paid by other purchasers in such offerings or transactions;

our ability to meet expectations with respect to payments of dividends and distributions and repurchases of shares of our Class A common stock and purchases of limited partnership interests of BGC Holdings, L.P., which we refer to as “BGC Holdings,” or other equity interests of our subsidiaries, including from Cantor, our executive officers, other employees, partners, and others, and the net proceeds to be realized by us from offerings of our shares of Class A common stock;

the effect on the market for and trading price of our Class A common stock of various offerings and other transactions, including our controlled equity and other offerings of Class A common stock and convertible securities, our repurchase of shares of Class A common stock and purchases of BGC Holdings limited partnership interests or other equity interests in our subsidiaries, our payment of dividends on Class A common stock and distributions on BGC Holdings limited partnership interests, convertible arbitrage, hedging, and other transactions engaged in by holders of our 4.50% convertible notes and counterparties to our capped call transactions, and resales of shares of Class A common stock acquired from us or Cantor, including pursuant to our employee benefit plans, conversion of our convertible notes, and distributions from Cantor pursuant to Cantor’s distribution rights obligations; and

the risk factors described in our latest Annual Report on Form 10-K and any updates to those risk factors or new risk factors contained in our subsequent Quarterly Reports on Form 10-Q and Current Reports on Form 8-K filed with the SEC, all of which we incorporate by reference herein.

The foregoing risks and uncertainties, as well as those risks and uncertainties referred to under the heading “Risk Factors” and those incorporated by reference herein, may cause actual results to differ materially from the forward-looking statements. The information included or incorporated by reference is given as of the respective dates of this prospectus or the documents incorporated by reference into this prospectus and future events or circumstances could differ significantly from such information. We do not undertake to publicly update or revise any forward-looking statements, whether as a result of new information, future events or otherwise.

## CERTAIN DEFINED TERMS

Unless we otherwise indicate or unless the context requires otherwise, any reference in this prospectus to:

“4.50% convertible notes” refers to the BGC Partners 4.50% convertible senior notes due 2016, which are convertible into shares of Class A common stock;

“8.75% convertible notes” refers to the BGC Partners 8.75% convertible senior notes due 2015, which are convertible into shares of Class A common stock;

“BGC Global” refers to BGC Global Holdings, L.P., which holds the non-U.S. businesses of BGC Partners;

“BGC Holdings” refers to BGC Holdings, L.P.;

“BGC Partners” refers to BGC Partners, Inc. and its consolidated subsidiaries;

“BGC Partners OldCo” refers to BGC Partners, LLC (formerly known as BGC Partners, Inc.) before the merger;

“BGC U.S.” refers to BGC Partners, L.P., which holds the U.S. businesses of BGC Partners;

“Cantor” or the “Cantor group” refers to Cantor Fitzgerald, L.P. and its subsidiaries other than BGC Partners;

“Cantor units” refers to exchangeable limited partnership interests of BGC Holdings held by Cantor entities;

“CF&Co” refers to Cantor Fitzgerald & Co.;

“CFGM” refers to CF Group Management, Inc., the managing general partner of Cantor;

“Class A common stock” refers to BGC Partners Class A common stock, par value \$0.01 per share;

“Class B common stock” refers to BGC Partners Class B common stock, par value \$0.01 per share;

“common stock” refers to Class A common stock and Class B common stock, collectively;

“convertible notes” refers to the 4.50% convertible notes and the 8.75% convertible notes, collectively;

“distribution rights” refers to the obligation of Cantor to distribute to certain current and former partners of Cantor shares of Class A common stock;

“distribution rights shares” refers to shares of Class A common stock distributed or to be distributed by Cantor pursuant to distribution rights;

“eSpeed” refers to eSpeed, Inc.;

“founding partners” refers to the individuals who became limited partners of BGC Holdings in the mandatory redemption of interests in Cantor in connection with the separation and merger and who provide services to BGC Partners (provided that members of the Cantor group and Howard W. Lutnick (including any entity directly or indirectly controlled by Mr. Lutnick or any trust with respect to which he is a grantor, trustee or beneficiary) are not founding partners);

“founding partner units” refers to partnership units of BGC Holdings held by founding partners;

“founding/working partners” refers to founding partners and/or working partners of BGC Holdings;

“founding/working partner units” refers to partnership units of BGC Holdings held by founding/working partners;

“GAAP” refers to accounting principles generally accepted in the United States of America;

“limited partners” refers to holders of limited partnership units;

“limited partnership interests” refers to founding/working partner units, limited partnership units and Cantor units, collectively;

“limited partnership units” refers to REUs, RPU, PSUs and PSIs, collectively;

“merger” refers to the merger of BGC Partners OldCo with and into eSpeed on April 1, 2008 pursuant to the Agreement and Plan of Merger, dated as of May 29, 2007, as amended as of November 5, 2007 and February 1, 2008, by and among eSpeed, BGC Partners OldCo, Cantor, BGC U.S., BGC Global and BGC Holdings;

“OpCos” refers to BGC U.S. and BGC Global, collectively;





## Table of Contents

“PSIs” refers to certain working partner units of BGC Holdings held by certain employees of BGC Partners and other persons who provide services to BGC Partners;

“PSUs” refers to certain working partner units of BGC Holdings held by certain employees of BGC Partners and other persons who provide services to BGC Partners;

“REUs” refers to certain limited partnership units of BGC Holdings held by certain employees of BGC Partners and other persons;

“RPU” refers to certain limited partnership units of BGC Holdings held by certain employees of BGC Partners and other persons;

“RSUs” refers to BGC Partners’ unvested restricted stock units held by certain employees of BGC Partners and other persons who provide services to BGC Partners;

“separation” refers to the transfer by Cantor of certain assets and liabilities to BGC Partners OldCo and/or its subsidiaries pursuant to the Separation Agreement, dated as of March 31, 2008, by and among Cantor, BGC Partners OldCo, BGC U.S., BGC Global and BGC Holdings;

“September 2010 sales agreement” refers to the controlled equity offering<sup>SM</sup> sales agreement, dated September 3, 2010, between BGC Partners and CF&Co;

“working partners” refers to the individuals who become limited partners of BGC Holdings from time to time after the separation and the merger and who provide services to BGC Partners; and

“working partner units” refers to partnership units of BGC Holdings held by working partners.

## SUMMARY

*This summary highlights selected information from this prospectus, but may not contain all information that may be important to you. The following summary is qualified in its entirety by the more detailed information included in or incorporated by reference into this prospectus. For a more complete understanding of the terms of our Class A common stock, and before making your investment decision, you should carefully read this entire prospectus and the documents referred to in “Where You Can Find More Information” and “Documents Incorporated by Reference.” See the “Certain Defined Terms” section beginning on page v of this prospectus for the definition of certain terms used in this prospectus.*

*When we use the words “BGC Partners,” “we,” “us,” “our” or the “Company,” we are referring to BGC Partners, Inc. and its consolidated subsidiaries.*

### The Company

We are a leading global brokerage company servicing the wholesale financial markets, specializing in the brokering of a broad range of financial products globally, including fixed income securities, interest rate swaps, foreign exchange, equities, equity derivatives, credit derivatives, commodities, futures, structured products and other instruments. We also provide a full range of services, including trade execution, broker-dealer services, clearing, processing, information, and other back-office services to a broad range of financial and non-financial institutions. Through our eSpeed and BGC Trader™ brands, we also offer financial technology solutions and market data and analytics related to select financial instruments and markets. Our customers include many of the world’s largest banks, broker-dealers, investment banks, trading firms, hedge funds, governments and investment firms. Our integrated platform is designed to provide flexibility to customers with regard to price discovery, execution and processing of transactions, and enables them to use voice, hybrid, or, where available, fully electronic brokerage services in connection with transactions executed either over-the-counter, which we refer to as “OTC,” or through an exchange.

We have offices in 25 cities, including New York and London, as well as in Aspen, Beijing, Chicago, Copenhagen, Dubai, Garden City (New York), Hong Kong, Istanbul, Johannesburg, Mexico City, Moscow, Nyon, Paris, Rio de Janeiro, São Paulo, Sarasota, Seoul, Singapore, Sydney, Tokyo, Toronto, West Palm Beach and Zurich.

As of June 30, 2011, we had 1,780 brokers and salespeople across approximately 200 desks and products (more than triple the number we had in October 2004). In 2010, we processed approximately 21.3 million transactions, totaling almost \$171 trillion notional on our hybrid and fully electronic platforms. During the first half of 2011, we processed approximately 13.7 million such transactions, totaling almost \$107.1 trillion notional.

### Our Organizational Structure

On April 1, 2008, BGC Partners OldCo and eSpeed merged to form BGC Partners. Immediately prior to the merger, pursuant to a separation agreement, Cantor transferred certain assets and liabilities to BGC Partners OldCo and/or its subsidiaries.

We are a holding company, and our businesses are operated through two operating partnerships: BGC U.S., which holds our U.S. businesses, and BGC Global, which holds our non-U.S. businesses. In connection with the separation, Maxcor Financial Group Inc. was contributed to BGC Partners OldCo in exchange for BGC Partners OldCo units that became shares of our common stock in the merger, and certain businesses were contributed to the OpCos in exchange for limited partnership interests of the OpCos. In connection with the merger, eSpeed contributed certain businesses to the OpCos in exchange for limited partnership interests of the OpCos.

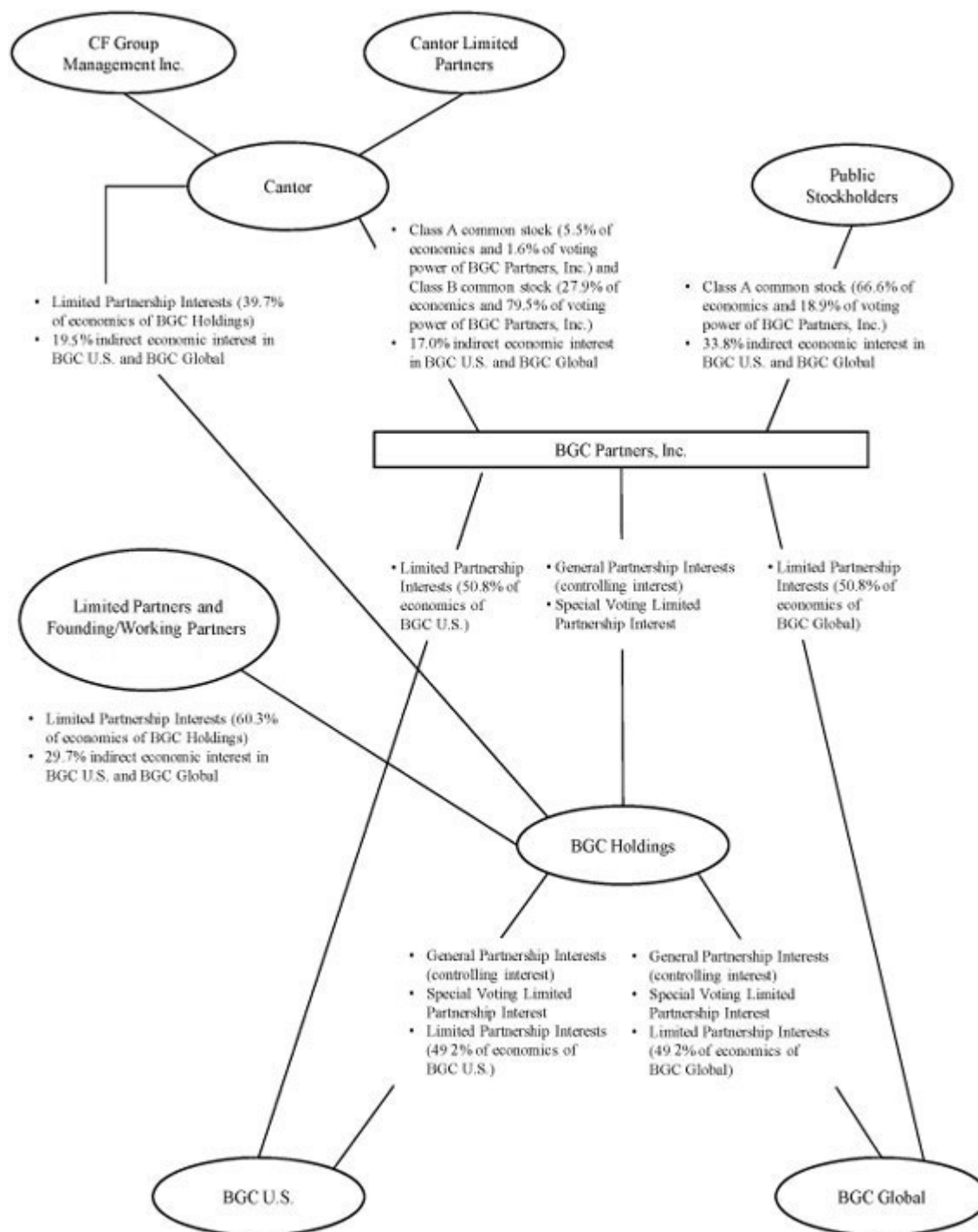
The limited partnership interests of the OpCos are held by us and BGC Holdings, and the limited partnership interests of BGC Holdings are currently held by Cantor, the founding/working partners and holders of limited partnership units. We hold the BGC Holdings general partnership interest and the BGC Holdings special voting limited partnership interest, which entitle us to remove and appoint the general partner of BGC Holdings, and serve as the general partner of BGC Holdings, which entitles us to control BGC Holdings. BGC Holdings, in turn, holds the BGC U.S. general partnership interest and the BGC U.S. special voting limited partnership interest, which entitle the holder thereof to remove and appoint the general partner of BGC U.S., and the BGC Global general partnership



## Table of Contents

interest and the BGC Global special voting limited partnership interest, which entitle the holder thereof to remove and appoint the general partner of BGC Global, and serves as the general partner of BGC U.S. and BGC Global, all of which entitle BGC Holdings (and thereby us) to control each of BGC U.S. and BGC Global. BGC Holdings holds its BGC Global general partnership interest through a company incorporated in the Cayman Islands, BGC Global Holdings GP Limited.

The following diagram illustrates our ownership structure as of August 12, 2011. The following diagram does not reflect the various subsidiaries of us, BGC U.S., BGC Global, BGC Holdings or Cantor, or, to the extent applicable, outstanding RSUs.



\* Shares of our Class B common stock are convertible into shares of our Class A common stock at any time in the discretion of the holder on a one-for-one basis. Accordingly, if Cantor converted all of its Class B common stock into Class A common stock, Cantor would hold 33.4% of the voting power and the public stockholders would hold 66.6% of the voting power (and the indirect economic interests in BGC U.S. and BGC Global would remain unchanged). The diagram reflects the exchange by Cantor on May 5, 2011 of 9,000,000 Cantor units for 9,000,000 shares of Class A common stock and the subsequent distribution by Cantor of 3,319,097 of such shares pursuant to distribution rights. These 9,000,000 shares of Class A common stock, less 3,369 shares that were distributed by Cantor to one of our executive officers, are included in this prospectus. The diagram also reflects the exchange by Cantor on May 6, 2011 of 9,000,000 Cantor units for 9,000,000 shares of our Class B common stock. In addition, the diagram reflects (a) the donation of 443,686 shares of Class A common stock by us to The Cantor Fitzgerald Relief Fund on May 9, 2011 in connection with our 2010 Charity Day, which shares are included in this prospectus, (b) Cantor's donation of 42,527 shares of Class A common stock to a charity on May 31, 2011, which shares are not being sold under the registration statement, and (c) Cantor's donation of 150,000 shares of Class A common stock to The Cantor Fitzgerald Relief Fund on July 27, 2011, which shares are not being sold under the registration statement. The diagram does not reflect Cantor's economic interest in the 8.75% convertible notes or the 22,275,230 shares of Class A common stock acquirable by Cantor upon conversion thereof. If Cantor converted all of the 8.75% convertible notes into shares of Class A common stock, Cantor would hold 82.0% of the voting power and the public stockholders would hold 18.0% of the voting power (and its indirect economic interests in each of BGC U.S. and BGC Global would be 41.8%). Further, the diagram does not reflect (i) the 10,000,000 shares of Class A common stock that may be sold under the BGC Partners, Inc. Dividend Reinvestment and Stock Purchase Plan pursuant to our shelf Registration Statement on Form S-3 (Registration No. 333-173109); (ii) the 1,211,090 shares of Class A common stock that may be sold pursuant to the September 2010 sales agreement, and any shares of Class A common stock remaining after the sale of such 1,211,090 shares, pursuant to our shelf Registration Statement on Form S-3 (Registration No. 333-166564); (iii) the 20,000,000 shares of Class A common stock that may be sold pursuant to our acquisition shelf Registration Statement on Form S-4 (Registration No. 333-169232); or (iv) the 16,260,160 shares of Class A common stock that may be issued upon conversion of the 4.50% convertible notes. For purposes of the diagram and this paragraph, Cantor's percentage ownership also includes CFGM's percentage ownership.

### **Executive Offices**

Our executive offices are located at 499 Park Avenue, New York, New York 10022, while our international headquarters are located at 1 Churchill Place, Canary Wharf, London E14 5RD, United Kingdom. Our telephone number is (212) 610-2200. Our website is located at [www.bgcpartners.com](http://www.bgcpartners.com) and our email is [info@bgcpartners.com](mailto:info@bgcpartners.com). The information contained on, or that may be accessed through, our website is not part of, and is not incorporated into, this prospectus.

**The Offering**

Shares of our Class A common  
stock offered by the Selling

Stockholders: 9,440,317 shares

Use of Proceeds: We do not expect to receive any of the proceeds from the sale of shares of our Class A common stock by the Selling Stockholders. The Individual Selling Stockholders who are current or former partners of Cantor will be expected to use the proceeds from such sales to repay any outstanding loans to, or credit enhanced by, Cantor before receipt of any net proceeds.

## RISK FACTORS

An investment in shares of our Class A common stock involves risks. You should consider carefully the “Risk Factors” section of our latest Annual Report on Form 10-K filed with the SEC, and any updates to those risk factors or new risk factors contained in our subsequent Quarterly Reports on Form 10-Q and Current Reports on Form 8-K filed with the SEC, all of which we incorporate by reference herein, as well as the other information included in this prospectus before making an investment decision. Any of the risk factors could significantly and negatively affect our businesses, financial condition, results of operations, cash flows, and prospects and the trading price of Class A common stock. You could lose all or part of your investment.



## USE OF PROCEEDS

We do not expect to receive any of the proceeds from the sale of shares of our Class A common stock by the Selling Stockholders. The Individual Selling Stockholders who are current or former partners of Cantor will be expected to use the proceeds from such sales to repay any outstanding loans to, or credit enhanced by, Cantor before receipt of any net proceeds.

## DIVIDEND POLICY

Our board of directors has authorized a dividend policy which provides that we expect to pay not less than 75% of our “post-tax distributable earnings per fully diluted share” as cash dividends to our common stockholders, with the balance of such distributable earnings to be available to repurchase shares of our Class A common stock or purchase BGC Holdings limited partnership interests or other equity interests in our subsidiaries, including from Cantor, our executive officers, other employees, partners and others. Please see below for a detailed definition of “post-tax distributable earnings per fully diluted share.”

Our board of directors and our audit committee have authorized repurchases of shares of our Class A common stock and purchases of BGC Holdings limited partnership interests or other equity interests in our subsidiaries as part of this policy, including those held by Cantor, our executive officers, other employees, partners and others. As of August 12, 2011, we had approximately \$52.2 million remaining under this authorization and may continue to actively make repurchases or purchases, or cease to make such repurchases or purchases, from time to time.

We expect to pay such dividends, if and when declared by our board of directors, on a quarterly basis. The dividend to our common stockholders is expected to be calculated based on post-tax distributable earnings allocated to BGC Partners, Inc. and generated over the fiscal quarter ending prior to the record date for the dividend. No assurance can be made, however, that a dividend will be paid each quarter.

The declaration, payment, timing and amount of any future dividends payable by us will be at the sole discretion of our board of directors. We are a holding company, with no direct operations, and therefore we are able to pay dividends only from our available cash on hand and funds received from distributions from BGC U.S. and BGC Global. Our ability to pay dividends may also be limited by regulatory considerations as well as by covenants contained in financing or other agreements. In addition, under Delaware law, dividends may be payable only out of surplus, which is our net assets minus our liabilities and our capital, or, if we have no surplus, out of our net profits for the fiscal year in which the dividend is declared and/or the preceding fiscal year. Accordingly, any unanticipated accounting, tax, regulatory or other charges against net income may adversely affect our ability to declare dividends. While we intend to declare and pay dividends quarterly, there can be no assurance that our board of directors will declare dividends at all or on a regular basis or that the amount of our dividends will not change.

### *Certain Definitions*

“Revenues for distributable earnings,” “pre-tax distributable earnings” and “post-tax distributable earnings” are supplemental measures of operating performance that are used by our management to evaluate the financial performance of us and our subsidiaries. We believe that distributable earnings best reflects the operating earnings generated by the Company on a consolidated basis and are the earnings which management considers available for distribution to BGC Partners and its common stockholders, as well as to holders of BGC Holdings limited partnership interests, during any period.

As compared with “income (loss) from operations before income taxes,” “net income (loss) for fully diluted shares,” and “fully diluted earnings (loss) per share,” all prepared in accordance with GAAP, distributable earnings calculations primarily exclude certain non-cash compensation and other expenses which generally do not involve the receipt or outlay of cash by us, which do not dilute existing stockholders, and which do not have economic consequences, as described below. In addition, distributable earnings calculations exclude certain gains and charges that management believes do not best reflect our ordinary operating results.

Revenues for distributable earnings are defined as GAAP revenues excluding the impact of our non-cash earnings or losses related to our equity investments, such as in Aqua Securities, L.P. and ELX Futures, L.P., and its holding company general partner, ELX Futures Holdings LLC.

## Table of Contents

“Pre-tax distributable earnings” are defined as GAAP income (loss) from operations before income taxes excluding items that are primarily non-cash, non-dilutive, and non-economic, such as:

Non-cash stock-based equity compensation charges for REUs granted or issued prior to the merger of BGC Partners OldCo with and into eSpeed, as well as post-merger non-cash, non-dilutive equity-based compensation related to partnership unit exchange or conversion;

Allocations of net income to founding/working partner and other limited partnership units, including REUs, RPU, PSUs and PSIs; and

Non-cash asset impairment charges, if any.

Distributable earnings calculations also exclude charges related to purchases, cancellations or redemptions of limited partnership interests and certain one-time or non-recurring items, if any.

Beginning with the first quarter of 2011, our definition of distributable earnings has been revised to also exclude certain gains and charges with respect to acquisitions, dispositions and resolutions of litigation. This change in the definition of distributable earnings is not reflected in, nor does it affect, our presentation of prior periods. Our management believes that excluding these gains and charges best reflects our operating performance.

Since distributable earnings are calculated on a pre-tax basis, management intends to also report “post-tax distributable earnings” and “post-tax distributable earnings per fully diluted share”:

“Post-tax distributable earnings” are defined as pre-tax distributable earnings adjusted to assume that all pre-tax distributable earnings were taxed at the same effective rate.

“Post-tax distributable earnings per fully diluted share” are defined as post-tax distributable earnings divided by the weighted-average number of fully diluted shares for the period.

In the event that there is a GAAP loss but positive distributable earnings, the post-tax distributable earnings per fully diluted share calculation will include all fully diluted shares that would be excluded under GAAP to avoid anti-dilution, but will exclude quarterly interest expense, net of tax, associated with the convertible notes.

Each quarter, the dividend to common stockholders is expected to be determined by our board of directors with reference to post-tax distributable earnings per fully diluted share. In addition to the quarterly dividend to our common stockholders, we expect to pay a pro rata distribution of net income to BGC Holdings founding/working partner and other limited partnership units, including REUs, RPU, PSUs and PSIs, and to Cantor for its noncontrolling interest. The amount of all of these payments is expected to be determined using the above definition of post-tax distributable earnings per fully diluted share.

Certain employees who are holders of RSUs are granted pro rata payments equivalent to the amount of dividends paid to common stockholders. Under GAAP, a portion of the dividend equivalents on RSUs is required to be taken as a compensation charge in the period paid. However, to the extent that they represent cash payments made from the prior period’s distributable earnings, they do not dilute existing stockholders and are therefore excluded from the calculation of distributable earnings.

Distributable earnings is not meant to be an exact measure of cash generated by operations and available for distribution, nor should it be considered in isolation or as an alternative to cash flows from operations or income (loss) for fully diluted shares. We view distributable earnings as a metric that is not necessarily indicative of liquidity or the cash available to fund our operations.

Pre- and post-tax distributable earnings are not intended to replace the presentation of our GAAP financial results. However, management believes that they help provide investors with a clearer understanding of our financial performance and offer useful information to both management and investors regarding certain financial and business trends related to our financial condition and results of operations. Management believes that distributable earnings and the GAAP measures of our financial performance should be considered together.

**PRICE RANGE OF CLASS A COMMON STOCK**

Our Class A common stock is traded on the Nasdaq Global Select Market under the symbol “BGCP.” There is no public trading market for our Class B common stock, which is held by Cantor and CFGM. The following table sets forth, for the fiscal quarters indicated, the high and low sales prices per share of Class A common stock on the Nasdaq Global Select Market.

We paid quarterly dividends on our common stock of \$0.09, \$0.09, \$0.08, \$0.06, \$0.14, \$0.14, \$0.14, \$0.14 and \$0.17 for the first, second, third and fourth quarters of 2009 and 2010 and for the first quarter of 2011, respectively. In addition, on July 24, 2011, we declared a dividend of \$0.17, payable on August 25, 2011 to our common stockholders of record as of August 11, 2011, for the second quarter of 2011.

	<u>High</u>	<u>Low</u>
<b>2011</b>		
First Quarter	\$10.07	\$7.72
Second Quarter	\$9.75	\$7.27
Third Quarter (through August 17)	\$8.58	\$6.00
<b>2010</b>		
First Quarter	\$6.47	\$3.72
Second Quarter	\$6.97	\$5.05
Third Quarter	\$6.03	\$4.69
Fourth Quarter	\$8.76	\$5.95
<b>2009</b>		
First Quarter	\$3.24	\$1.40
Second Quarter	\$4.05	\$2.18
Third Quarter	\$4.74	\$3.78
Fourth Quarter	\$5.66	\$4.13

On August 17, 2011, the closing sales price of our Class A common stock on the Nasdaq Global Select Market was \$6.70. As of August 17, 2011, there were 325 holders of record of Class A common stock and two holders of record of our Class B common stock.

## SELLING STOCKHOLDERS

In connection with the separation and merger, on April 1, 2008 Cantor granted to certain current and former Cantor partners distribution rights entitling such partners to receive over time from Cantor an aggregate of 33,371,740 shares of our Class A common stock. Since the merger, and through August 12, 2011, Cantor has distributed to such partners an aggregate of 17,104,455 distribution rights shares, and 16,267,285 such shares remain to be distributed. Cantor may satisfy its distribution rights obligations by distributing to the partners shares of Class A common stock owned by it, shares of Class A common stock acquired by it upon exchange of Cantor units owned by it, shares of Class A common stock acquired by it upon conversion of shares of our Class B common stock owned by it, shares of Class A common stock acquired by it upon conversion of the 8.75% convertible notes, or any other shares of Class A common stock now owned or hereafter acquired by it. In addition, from time to time Cantor may donate shares of Class A common stock to Charitable Organizations.

This prospectus relates to 8,996,631 shares of our Class A common stock, which Cantor acquired on May 5, 2011 upon exchange of 9,000,000 Cantor units for 9,000,000 shares of Class A common stock (3,369 of which have been distributed by Cantor to one of our executive officers and are not being offered and sold pursuant to the registration statement of which this prospectus forms a part). Of the 8,996,631 shares of Class A common stock, an aggregate of 3,315,728 shares have already been distributed by Cantor to partners and may be offered and sold through this prospectus by the Individual Selling Stockholders identified in the table below, and the remaining 5,680,903 shares may be offered and sold under the registration statement (1) either by Cantor at the direction and for the account of the Individual Selling Stockholders holding the related distribution rights, or by such Individual Selling Stockholders as distributees of the shares from Cantor, which Individual Selling Stockholders in each such case will be identified in a prospectus supplement to the extent required prior to the time of any offer or sale of such Individual Selling Stockholders' shares pursuant to the registration statement, or (2) by the Charitable Organizations, which will be identified in a prospectus supplement to the extent required prior to the time of any offer or sale of such Charitable Organizations' shares pursuant to the registration statement. Although nominally listed as a Selling Stockholder, Cantor will not be selling any shares for its own account under the registration statement.

This prospectus also relates to 443,686 shares of our Class A common stock that may be offered and sold by the Relief Fund under the registration statement. These 443,686 shares of Class A common stock were donated by us to The Cantor Fitzgerald Relief Fund on May 9, 2011.

The table below provides Selling Stockholder information, which has been supplied by Cantor and the Selling Stockholders that are currently offering and selling shares of our Class A common stock pursuant to this prospectus, concerning the beneficial ownership of Class A common stock as of August 12, 2011 by such Selling Stockholders. Selling Stockholder information for each additional Selling Stockholder will be set forth by prospectus supplement to the extent required prior to the time of any offer or sale of such Selling Stockholder's shares under the registration statement. Any prospectus supplement may add, update, substitute or change the information contained in this prospectus, including the identities of the Selling Stockholders and the number of shares being offered and sold by them or on their behalf. The Selling Stockholders may sell all, some or none of such shares. See "Plan of Distribution." In addition, certain of the Selling Stockholders have offered and sold and may in the future offer and sell shares of Class A common stock pursuant to our separate resale shelf Registration Statement on Form S-3 (Registration No. 333-167953).

For more information regarding Cantor and the material relationships it has with us, see our latest Annual Report on Form 10-K filed with the SEC, and any updates thereto contained in our subsequent Quarterly Reports on Form 10-Q and Current Reports on Form 8-K filed with the SEC, all of which are incorporated herein by reference. For purposes of the table below, we have assumed that, following the completion of the sale of shares of our Class A common stock included in this prospectus, there will continue to be 89,875,236 shares of Class A common stock outstanding.

Except as indicated in the footnotes to the table below, each of the Selling Stockholders listed below has sole voting and investment power with respect to all shares of our Class A common stock shown as beneficially owned by such person. The principal address of each of the Selling Stockholders is 499 Park Avenue, New York, New York 10022.

The table below does not set forth separately the 34,799,362 shares of our Class B common stock held by Cantor, which represents 99.9% of the total Class B common stock outstanding as of August 12, 2011. Shares of Class B common stock are convertible into shares of our Class A common stock at any time in the discretion of the holder on a one-for-one basis. In addition, the table does not set forth separately Cantor's 47,862,204 rights to acquire shares of



## Table of Contents

Class B common stock upon exchange of Cantor units. As referenced in footnote (2) to the table below, a total of 47,862,204 Cantor units are exchangeable by Cantor with us at any time for shares of Class B common stock (or at Cantor's option, or if there are no additional authorized and unissued shares of Class B common stock, Class A common stock) on a one-for-one basis. As of August 12, 2011, there were 49,500,000 authorized and unissued shares of Class B common stock.

Each Individual Selling Stockholder listed in the table below is a current or former partner of Cantor. The determination of beneficial ownership of the shares of our Class A common stock held by each such person as of August 12, 2011 and immediately after the sale of shares included in this prospectus includes ownership of the following, except as otherwise noted in footnotes to the table below:

shares of Class A common stock that are acquirable upon the exercise of options currently exercisable or exercisable within 60 days from August 12, 2011;

shares of Class A common stock that are acquirable upon the exchange of exchangeable limited partnership interests currently exchangeable or exchangeable within 60 days from August 12, 2011;

shares of Class A common stock acquirable upon the vesting of RSUs within 60 days from August 12, 2011; and

any other shares of Class A common stock beneficially owned by such person.

	Shares of Class A Common Stock Beneficially Owned		Shares of Class A Common Stock Being Sold		Shares of Class A Common Stock Beneficially Owned Immediately Following Such Sales	
	Shares	%	Shares		Shares	%
Cantor Fitzgerald, L.P. <sup>(1)</sup>	111,415,560 <sup>(2)</sup>	57.2% <sup>(3)</sup>	5,680,903 <sup>(4)</sup>		105,734,657	54.3 % <sup>(3)</sup>
Cantor Fitzgerald Relief Fund	474,060	*	443,686		30,374	*
Vincent Agoglia	26,166	*	26,166		—	*
Xavier Alcan	65,214	*	65,214		—	*
Andrew Aldeen	2,967	*	2,967		—	*
Joseph Allegue	8,726	*	1,636		7,090	*
Sebastian Aloï	35,689	*	5,473		30,216	*
Marc Altmann	1,010	*	1,010		—	*
Peter Angeli	2,805	*	2,805		—	*
Thomas Anzalone	3,194	*	694		2,500	*
Palin Archer	3,929	*	3,929		—	*
Patrick Asseman	61,737	*	12,739		48,998	*
Burak Atalay	17,934	*	4,013		13,921	*
Jean-Pierre Aubin	18,928	*	18,928		—	*
Eddie Au	976	*	976		—	*
Ayal Avni	10,606	*	10,606		—	*
Adam Baetu	893	*	274		619	*
Keith Bailey	1,287	*	963		324	*
Craig Bannister	5,474	*	5,474		—	*
Douglas Barnard	23,098	*	13,684		9,414	*
Peter Bartko	29,487	*	4,275		25,212	*
Stephen Bartlett	39,888	*	10,443		—	*
Lawrence Bayford	4,414	*	4,414		—	*
Brian Behrens	1,053	*	1,053		—	*
Didier Bensadoun	1,675	*	1,675		—	*
Peter Benyik	18,616	*	9,684		8,932	*
Todd Berlent	2,695	*	2,695		—	*
Riccardo Bernabei	6,405	*	1,407		4,998	*
Simon Bisset	8,769	*	8,769		—	*

James Blackshaw	4,552	*	4,552	—	*
Stephen Blakley	446	*	446	—	*
James Bond	5,954	*	5,954	—	*



## [Table of Contents](#)

	Shares of Class A Common Stock Beneficially Owned		Shares of Class A Common Stock Being Sold		Shares of Class A Common Stock Beneficially Owned Immediately Following Such Sales	
	Shares	%	Shares		Shares	%
Giovanni Bonomo	4,500	*	4,500	—		*
Avi Bouhadana	120,778	*	9,344	—		*
Jason Boyer	1,049	*	1,049	—		*
Mark Bradshaw	14,034	*	3,508	10,526		*
Steve Brenner	11,137	*	1,137	10,000		*
Sebastian Britschu	4,160	*	972	3,188		*
Robert Brown	3,155	*	3,155	—		*
Warren Burger	31,150	*	11,466	19,684		*
Kevin Burman	1,312	*	1,312	—		*
Anthony Cabrera	8,356	*	8,356	—		*
Anthony Cacioppo	20,450	*	20,450	—		*
John Capuano	14,526	*	1,944	12,582		*
Brian Carter	34,751	*	13,712	21,039		*
Vincent Catanzaro	730	*	730	—		*
Steven Cavaliere	9,421	*	5,473	3,948		*
Man Hin Henry Chan	36,239	*	2,807	33,432		*
Vincent Chan	11,295	*	2,259	9,036		*
Lester Chau	24,779	*	5,278	19,501		*
Patrick Cheah	976	*	976	—		*
Haibo Chen	1,446	*	1,446	—		*
Simon Chipchase	972	*	972	—		*
Kevin Christie	3,790	*	3,790	—		*
Joosong Chua	62,892	*	5,196	57,696		*
Alex Chu	1,410	*	1,410	—		*
Chua Leong Chuan Simon	972	*	972	—		*
Philip Chung	2,448	*	2,448	—		*
Robin Clark	12,021	*	12,021	—		*
William G. Clark	78,617	*	78,617	—		*
Matt Claus	158,101	*	8,566	149,535		*
Daryl Collyer	161	*	161	—		*
Michael Condelli	5,468	*	2,106	3,362		*
Jerome Contensou	2,430	*	2,430	—		*
Brian Cormack	14,334	*	5,183	9,151		*
Christophe Cornaire	20,480	*	20,480	—		*
Samuel Corney	4,342	*	972	3,370		*
Christopher W. Crosby	2,115	*	2,115	—		*
Timothy Cross	10,907	*	10,907	—		*
Craig D. Cummings	45,617	*	8,816	36,801		*
John Czarnowski	4,684	*	4,684	—		*
Dryw Danielson	3,498	*	3,498	—		*
John D' Antonio	12,508	*	2,041	10,467		*
Daniel Mark Davies	1,731	*	1,731	—		*
James Demarinis	1,168	*	1,168	—		*
Yvette Depinto	68,025	*	12,755	55,270		*
Jerome DePreneuf	6,114	*	1,146	4,968		*

David Diamond	13,476	*	4,746	8,730	*
Christopher Dickson	8,608	*	5,283	3,325	*
William Patrick Dockery	7,834	*	7,834	–	*
John S. Dods	14,585	*	2,585	12,000	*
Brian Doherty	5,733	*	5,733	–	*
Matthew Donnelly	2,106	*	2,106	–	*
Walter Donahue	162,614	*	20,304	142,310	*
Steven Michael Downham	5,175	*	5,175	–	*
Steve Drummond	7,773	*	7,773	–	*
Jon Eckert	30,986	*	30,986	–	*

## [Table of Contents](#)

	Shares of Class A Common Stock Beneficially Owned		Shares of Class A Common Stock Being Sold		Shares of Class A Common Stock Beneficially Owned Immediately Following Such Sales	
	Shares	%	Shares		Shares	%
Neil Edwards	1,992	*	1,992		—	*
Karim El Salakawi	972	*	972		—	*
Mark Fairhurst	70,687	*	3,930		66,757	*
Darren Fender	5,701	*	4,350		1,351	*
Simon Ferguson	2,298	*	1,348		950	*
Adrian Fernley	1,453	*	1,248		205	*
James R. Ficarro	135,221	*	631		134,590	*
Michael Field	5,182	*	972		4,210	*
Joseph Finnerty	14,795	*	2,106		12,689	*
Francis Fiolek	842	*	842		—	*
Wendall P. Flodeen	1,463	*	732		731	*
William Flynn	875	*	875		—	*
Ting Fong	976	*	976		—	*
Gregory Forde	9,716	*	9,716		—	*
Neil Fordham	47,622	*	47,622		—	*
James Formisano	8,745	*	8,745		—	*
Jerome Frank	65,326	*	26,326		39,000	*
Stuart Fraser	1,405,170 <sup>(5)</sup>	1.6 <sup>(6)</sup>	470,023	<sup>(7)</sup>	935,147	1.1 <sup>(6)</sup>
Philip Freifeld	4,295	*	875		3,420	*
Virginia Fu	16,143	*	3,228		12,915	*
Joseph Gabor	1,053	*	1,053		—	*
Lawrence Gage	133	*	133		—	*
Robert Game	972	*	972		—	*
Timothy Garwood	95,746	*	41,142		54,604	*
Ron Getto	13,008	*	8,456		4,552	*
James Darren Gilchrist	2,463	*	2,463		—	*
Jane Ginsburg	843	*	422		421	*
Philip Ginsberg	258,013	*	250,896		7,117	*
Michael Girardi	31,905	*	31,905		—	*
Kathleen T. Giuggio	30,085	*	10,000		20,085	*
Scott Golden	7,249	*	7,249		—	*
Victoria Gonticas	124	*	124		—	*
Frederick Gregson	5,000	*	972		4,028	*
Kevin Griffin	12,759	*	12,759		—	*
Michael Guzman	1,684	*	842		842	*
Lawrence Haag	3,360	*	3,360		—	*
Fahmi Hakura	22,086	*	22,086		—	*
Michael Halimi	123,080	*	9,445		113,635	*
Thomas Hardman	5,516	*	5,516		—	*
Stephen Hatch	1,950	*	1,950		—	*
Anthony Herbert	8,448	*	1,408		7,040	*
Tony Herbert	3,488	*	3,488		—	*
Scott F. Hermo	22,856	*	1,894		20,962	*
Stuart Hersch	48,132	*	12,632		35,500	*
Gary Hom	6,149	*	4,068		2,081	*

Timmy Hui	1,436	*	1,410	26	*
Michael Hull	1,958	*	1,958	—	*
David Hurley	302	*	302	—	*
Jay Itzkowitz	16,382	*	16,382	—	*
Jason Jakubowicz	12,500	*	12,500	—	*
Patrick Jelfs	264,343	*	24,868	239,475	*
Dean Johnson	2,807	*	2,807	—	*
Ceri Jones	963	*	963	—	*
Darren Jones	2,806	*	2,806	—	*

## [Table of Contents](#)

	Shares of Class A Common Stock Beneficially Owned		Shares of Class A Common Stock Being Sold		Shares of Class A Common Stock Beneficially Owned Immediately Following Such Sales	
	Shares	%	Shares		Shares	%
Riley Jones	842	*	842	—		*
Ricky Kam	1,847	*	1,409	438		*
Berk Kangal	21,401	*	4,013	17,388		*
David Henry Kendrick	2,126	*	2,126	—		*
Stephen Kent	45,549	*	6,044	39,505		*
John Kersse	3,954	*	1,904	2,050		*
Edward Keslo	8,745	*	8,745	—		*
Kevin Sc Kim	1,476	*	976	500		*
Kevin Kirby	17,975	*	5,176	12,799		*
Robert Kitchin	36,867	*	14,267	22,600		*
Denis Klotz	972	*	972	—		*
Lee Knight	1,684	*	1,684	—		*
Charles Knott	3,658	*	3,658	—		*
James Knott	18,020	*	3,004	15,016		*
Angelina Kwan	16,370	*	11,022	5,348		*
Richard Labenski	1,944	*	1,944	—		*
Charles Lai	7,748	*	7,748	—		*
John Laird	2,196	*	2,196	—		*
Gary Lambert	1,948	*	1,948	—		*
Max Joseph Landgraf	8,988	*	8,988	—		*
Stephen Larrabee	37,450	*	16,843	20,607		*
Edwin Lau	1,435	*	1,409	26		*
Melvin Lau	972	*	972	—		*
Edward Laux	2,948	*	2,948	—		*
Christopher Lee	10,593	*	5,420	5,173		*
Timothy Lees	5,182	*	972	4,210		*
Charles Lehoczký	12,632	*	4,211	8,421		*
Steven Lewis	99,252	*	37,810	61,442		*
Dominica Li	5,895	*	908	4,987		*
Arthur Liew	14,430	*	976	13,454		*
Mark William Lockey	5,183	*	5,183	—		*
Michael Loftus	38,410	*	15,364	23,046		*
Henry Lo	5,773	*	1,409	4,364		*
Bo Ching Lok	1,409	*	1,409	—		*
Alicia Long	5,183	*	5,183	—		*
Peter Losardo	972	*	972	—		*
Gary Macleod	12,632	*	4,211	8,421		*
Robert Mahon	12,318	*	1,264	11,054		*
Patrick Malcolm	1,264	*	1,264	—		*
John Manning	47,486	*	211	47,275		*
Anthony J. Manzo	134	*	134	—		*
Howard Marks	1,146	*	1,146	—		*
Daniel Martin	4,210	*	842	3,368		*
Frank Massaro	12,914	*	2,041	10,873		*
Jonathan A.R. Masters	2,724	*	2,724	—		*

Steven Matteo	5,588	*	4,128	1,460	*
Christopher Matuch	692	*	692	–	*
David McCann	2,463	*	1,978	485	*
Colum A. McCormack	41,867	*	41,867	–	*
Gerald McFadden	240,620	*	42,727	197,893	*
Sean McGee	2,106	*	2,106	–	*
Angus Mackay	1,403	*	1,403	–	*
Michael McNamara	11,385	*	232	11,153	*
Patrick McNelis	28,294	*	3,498	24,796	*
Kevin McNulty	15,325	*	15,325	–	*
Peter McRae	21,844	*	7,282	14,562	*

## [Table of Contents](#)

	Shares of Class A Common Stock Beneficially Owned		Shares of Class A Common Stock Being Sold		Shares of Class A Common Stock Beneficially Owned Immediately Following Such Sales	
	Shares	%	Shares		Shares	%
Matthew McTamane	4,858	*	4,858	—		*
Paul McVeety	62,130	*	15,547	46,583		*
Wayne Meisel	738	*	738	—		*
Eric Meyer	7,923	*	2,805	5,118		*
George Michell	17,206	*	974	16,232		*
D'arcy Miell	9,792	*	9,792	—		*
Paul Milora	1,050	*	1,050	—		*
Charles Michael Mizon	19,163	*	19,163	—		*
Hyim Mogilner	22,939	*	5,295	17,644		*
Francis Mok	1,698	*	1,409	289		*
Steven Montano	15,170	*	842	14,328		*
Robert A. Moore	10,528	*	10,528	—		*
Alex Morgan Hughes	9,501	*	9,501	—		*
Mark Morris	2,919	*	2,919	—		*
Craig Morse	7,031	*	1,403	5,628		*
Nadim Mourad	33,645	*	29,142	4,503		*
Susan Moyer	30,586	*	30,586	—		*
Gregg Mullen	16,283	*	4,071	12,212		*
Jason Mullem	1,265	*	1,265	—		*
Kanwardeep Najjhur	106,893	*	32,890	74,003		*
John Nealon	42,241	*	8,449	33,792		*
Francois Ngo	1,766	*	354	1,412		*
Phil Norton	74,892	*	24,964	49,928		*
Joseph C. Noviello	444,061	*	17,397	426,664		*
Robert Nunziato	2,835	*	2,835	—		*
Dean O'Neil	362	*	362	—		*
Peck Guan David Ong	5,835	*	1,417	4,418		*
Marc Pado	13,092	*	1,088	12,004		*
Bijoy Paul	34,858	*	4,858	30,000		*
David Pearn	3,403	*	3,403	—		*
Robert L. Pellati	232	*	232	—		*
Gerard Phelan	65,300	*	4,100	61,200		*
Paul Pion	56,630	*	56,630	—		*
James Pitts	810	*	810	—		*
Stephen Pledger	5,088	*	2,070	3,018		*
Dennis Potter	4,469	*	4,469	—		*
Richard Powell	977	*	977	—		*
Michael Anthony Pryal	28,785	*	14,636	14,149		*
Steve Pryor	25,912	*	25,912	—		*
Andrew Pullinger	3,312	*	3,312	—		*
Nicky Pullen	36,448	*	12,149	24,299		*
Tony Pullen	94,752	*	31,584	63,168		*
Ryan Quinn	5,054	*	5,054	—		*
Joerg Raabe	11,733	*	2,310	9,423		*
Christian Rajac	1,146	*	1,146	—		*

Jason Peter Rappolt	6,672	*	6,612	60	*
Gary Leonard Read	152,021	*	52,917	99,104	*
Charlotte Redpath	5,337	*	1,001	4,336	*
Keith Reihl	68,224	*	18,245	49,979	*
William Rice	172,986	*	171,986	1,000	*
Neil Riley	4,342	*	972	3,370	*
Patrice Robiquet	287	*	287	—	*
Jason Rogers	3,058	*	2,386	672	*



## [Table of Contents](#)

	Shares of Class A Common Stock Beneficially Owned		Shares of Class A Common Stock Being Sold		Shares of Class A Common Stock Beneficially Owned Immediately Following Such Sales	
	Shares	%	Shares		Shares	%
Paul Rogers	4,242	*	4,242	–		*
Peter Rogers	34,138	*	14,138	20,000		*
Jonathan Rose	2,107	*	2,107	–		*
Laurence Rose	23,038	*	13,038	10,000		*
Colin M. Rozario	26,157	*	5,052	21,105		*
R. John Rudolph	504	*	504	–		*
Mark Sadler	6,278	*	1,682	4,596		*
Christopher Sage	972	*	972	–		*
Atsuhiko Saiki	227	*	227	–		*
Dean Salmon	7,758	*	7,758	–		*
Thomas Sapio	35,856	*	35,856	–		*
Tadashi Sasamoto	23,342	*	9,448	13,894		*
Lionel Sayag	8,890	*	5,778	3,112		*
Craig Schneider	3,597	*	3,597	–		*
Jacquelyn Schnetzer	6,222	*	6,222	–		*
Arnold Schonbrun	2,681	*	2,681	–		*
Michael Secretan	22,105	*	22,105	–		*
Paul Selby	2,916	*	1,591	1,325		*
Russell M. Sellaers	23,783	*	4,459	19,324		*
James Shaffer	16,744	*	12,069	4,675		*
Andrew Shapiro	2,750	*	2,750	–		*
Andy Sharp	63,697	*	11,943	51,754		*
Richard Sharpe	963	*	963	–		*
Allan Shaw	18,581	*	18,569	12		*
Robert Shaw	1,050	*	1,050	–		*
Mark Shelton	3,009	*	3,009	–		*
Matthew Shimaitis	3,789	*	3,789	–		*
Won Geun Shin	33,366	*	2,695	30,671		*
Susan Simon	2,773	*	2,773	–		*
Jean Francios Simzac	4,661	*	4,661	–		*
Sarah Smart	5,937	*	4,644	1,293		*
Simon Smith	41,136	*	13,712	27,424		*
Robert Mark Snelling	4,686	*	4,686	–		*
Philippe Sossah	1,529	*	287	1,242		*
Tim Sparkes	5,331	*	5,331	–		*
Phillippe Spira	42,104	*	7,018	35,086		*
Mark Spring	5,198	*	5,198	–		*
Ian Stokes	5,137	*	5,137	–		*
Anne Stratford Martin	1,870	*	1,870	–		*
Daniel Sullivan	11,366	*	1,264	10,102		*
Robert Sutton	7,128	*	7,128	–		*
Michael Sweeting	79,720	*	24,720	55,000		*
Warren Paul Swick	18,349	*	13,349	5,000		*
George Tambakis	17,168	*	2,889	14,279		*
Keng Sheng Tan	7,135	*	1,398	5,737		*

Ben Tassell	34,728	*	3,773	30,955	*
Takashi Teshirogi	23,853	*	3,244	20,609	*
Guillaume Thibault	573	*	573	–	*
Nick Thompson	12,399	*	10,740	1,659	*
Daniele Tondo	39,148	*	2,796	36,352	*
Carl Tosner	2,284	*	1,347	937	*
Peter Tran	31,112	*	18,518	12,594	*
Salvatore Trani	7,770	*	5,830	1,940	*
Ken Tricker	1,433	*	1,433	–	*
Robert Trief	9,882	*	9,882	–	*
Patrick Troy	113,072	*	29,790	83,282	*
Robert Twohig	875	*	875	–	*
Carmine Urciuoli	4,211	*	4,211	–	*

## Table of Contents

	Shares of Class A Common Stock Beneficially Owned		Shares of Class A Common Stock Being Sold		Shares of Class A Common Stock Beneficially Owned Immediately Following Such Sales	
	Shares	%	Shares		Shares	%
Patrick Uzan	1,821	*	472		1,349	*
Eric Van Deer Steeg	16,844	*	5,615		11,229	*
Haik Vartany	51,434	*	16,206		35,228	*
Thierry Vergeau	42,401	*	8,775		33,626	*
Peter Veritas	31,320	*	9,716		21,604	*
Lee Victory	37,710	*	7,072		30,638	*
Prasad Viswambharan	13,602	*	5,182		8,420	*
Vito Vitello	3,498	*	3,498		–	*
Harry Waizer	20,028	*	106		19,922	*
Frank B. Walczak	2,842	*	842		2,000	*
Raymond Walton	12,627	*	12,627		–	*
Noel Ward	4,179	*	350		3,829	*
Mark Webster	60,832	*	28,627		32,205	*
Bernard A. Weinstein	317,478	*	44,562		272,916	*
Peter John Wells	20,160	*	3,780		16,380	*
Andrew Craig Wels	3,984	*	3,984		–	*
Steven Whale	3,347	*	3,347		–	*
Brad Whitener	1,263	*	1,263		–	*
Oliver John White	6,607	*	6,607		–	*
Arnaud Witrand	44,716	*	7,452		37,264	*
Bettina Wittich	50,053	*	25,026		25,027	*
Po Ming Wong	1,450	*	1,409		41	*
Rebecca Wong	2,760	*	2,760		–	*
Mark S. Woodcock	24,458	*	4,586		19,872	*
Michael Woolnough	12,632	*	4,211		8,421	*
Matthew Wyant	1,254	*	1,254		–	*
Belghiti Yassine	11,314	*	7,354		–	*

\* Less than 1%.

- (1) Cantor has pledged to us, pursuant to a Pledge Agreement, dated as of July 26, 2007, such number of shares of our Class A common stock and our Class B common stock as equals 125% of the principal amount of the loans outstanding on any given date, as security for loans we agreed to make to Cantor from time to time. In September 2008, we were authorized to increase the amount available under the secured loan and Pledge Agreement with Cantor from up to \$100.0 million to all excess cash other than that amount needed for regulatory purposes, and to also accept, as security, pledges of any securities in addition to pledges of Class A common stock and Class B common stock provided for under the original secured loan and Pledge Agreement. As of August 12, 2011, there was no loan amount outstanding, and there were no shares of Class A common stock or Class B common stock pledged under the Pledge Agreement.
- (2) Consists of (i) 6,478,764 shares of our Class A common stock, (ii) 34,799,362 shares of Class A common stock acquirable upon conversion of 34,799,362 shares of our Class B common stock, (iii) 47,862,204 shares of Class A common stock acquirable upon exchange of 47,862,204 Cantor units (or upon conversion of 47,862,204 shares of Class B common stock acquirable upon exchange of 47,862,204 Cantor units), and (iv) 22,275,230 shares of Class A common stock acquirable upon conversion of the 8.75% convertible notes.
- (3) Percentage based upon (i) 89,875,236 shares of our Class A common stock outstanding, (ii) 34,799,362 shares of Class A common stock acquirable upon conversion of 34,799,362 shares of Class B common stock, (iii) 47,862,204 shares of Class A common stock acquirable upon exchange of 47,862,204 Cantor units (or upon conversion of 47,862,204 shares of Class B common stock acquirable upon

exchange of 47,862,204 Cantor units), and (iv) 22,275,230 shares of Class A common stock acquirable upon conversion of the 8.75% convertible notes.

## Table of Contents

- (4) Although nominally listed as a Selling Stockholder, Cantor will not be selling any shares of our Class A common stock for its own account under the registration statement. All of these 5,680,903 shares may be sold by Cantor at the direction and for the account of, or distributed by Cantor to, Individual Selling Stockholders pursuant to distribution rights, or donated by Cantor to Charitable Organizations. Until these shares are actually sold, distributed or donated, as the case may be, they will be reflected as being beneficially owned by Cantor. None of these 5,680,903 shares is currently being offered and sold pursuant to this prospectus by or for the account of identified Individual Selling Stockholders or Charitable Organizations. Selling Stockholder information for such additional Individual Selling Stockholders and Charitable Organizations that beneficially own or will own any of these 5,680,903 shares of Class A common stock included in this prospectus will be set forth in prospectus supplements to the extent required prior to the time of any offer or sale of such shares.
- (5) Consists of (i) 124,992 shares of our Class A common stock held directly by Mr. Fraser, which are being offered and sold pursuant to this prospectus, (ii) 200,000 shares of Class A common stock acquirable upon exchange of 200,000 currently exchangeable founding partner units held by Mr. Fraser, (iii) an aggregate of 372,461 shares of Class A common stock held by trusts for the benefit of Mr. Fraser's children, of which 345,031 shares are being offered and sold pursuant to this prospectus, and (iv) 707,717 shares of Class A common stock held by Lord Lovat, Inc., of which 123,957 shares are being offered and sold pursuant to our separate resale shelf Registration Statement on Form S-3. Mr. Fraser is the sole stockholder of Lord Lovat, Inc.
- (6) Percentage based on (i) 89,875,236 shares of our Class A common stock outstanding, and (ii) 200,000 currently shares of Class A common stock acquirable by Mr. Fraser upon exchange of 200,000 currently exchangeable founding partner units.
- (7) Consists of (i) the 124,992 shares of our Class A common stock held directly by Mr. Fraser, and (ii) the aggregate of 345,031 shares of Class A common stock held by the following trusts for the benefit of Mr. Fraser's children: Trust N17 F/B/O Samantha Fraser (89,008); Trust N14 F/B/O Scott Fraser (118,236); and Trust N13 F/B/O Thomas Fraser (137,787).

## DESCRIPTION OF CAPITAL STOCK

*The following summary is a description of the material terms of our capital stock. Copies of our certificate of incorporation and bylaws and other documents referred to herein are incorporated by reference as exhibits to the registration statement of which this prospectus forms a part.*

### Our Capital Stock

The following descriptions of our Class A common stock, Class B common stock, and preferred stock and of the relevant provisions of our certificate of incorporation and bylaws and other documents are summaries thereof and are qualified in their entirety by reference to our certificate of incorporation and bylaws and such other documents, copies of which are incorporated by reference as exhibits to the registration statement of which this prospectus forms a part, and applicable law. Our certificate of incorporation and bylaws are each an amendment and restatement of the eSpeed certificate of incorporation and bylaws.

Our authorized capital stock consists of 600 million shares of common stock, consisting of 500 million shares of our Class A common stock, par value \$0.01 per share, and 100 million shares of our Class B common stock, par value \$0.01 per share, and 50 million shares of preferred stock, par value \$0.01 per share.

### Common Stock

As of August 12, 2011, there were 89,875,236 shares of our Class A common stock outstanding and 34,848,107 shares of our Class B common stock outstanding. The holders of Class A common stock are generally entitled to one vote per share on all matters to be voted upon by the stockholders as a group, entitling holders of Class A common stock to approximately 20.5% of our voting power as of such date, and do not have cumulative voting rights. The holders of Class B common stock are generally entitled to ten votes per share on all matters to be voted upon by the stockholders as a group, entitling holders of Class B common stock to 79.5% of our voting power as of such date, and do not have cumulative voting rights. Cantor and CFGM, the managing general partner of Cantor and an entity controlled by our Chairman and Chief Executive Officer, Howard W. Lutnick, are the only holders of Class B common stock. Class B common stock generally votes together with Class A common stock on all matters submitted to the vote of Class A common stockholders.

Each share of our Class A common stock is equivalent to a share of our Class B common stock for purposes of economic rights. Subject to preferences that may be applicable to any outstanding preferred stock, the holders of shares of Class A common stock and Class B common stock are entitled to receive ratably such dividends, if any, as may be declared from time to time by our board of directors out of funds legally available therefor. See “Dividend Policy” and “Price Range of Class A Common Stock.” In the event of our liquidation, dissolution or winding up, the holders of shares of Class A common stock and Class B common stock are entitled to share ratably in all assets remaining after payment of liabilities, subject to prior rights of preferred stock, if any, then outstanding.

Shares of our Class A common stock are not subject to any conversion right. Our certificate of incorporation provides that each share of our Class B common stock is convertible at any time, at the option of the holder, into one share of Class A common stock. Each share of Class B common stock will automatically convert into one share of Class A common stock upon any sale, pledge or other transfer, which we refer to as a “transfer,” whether or not for value, by the initial registered holder, other than any transfer by the initial holder to (1) Cantor, (2) any entity controlled by Cantor or by Mr. Lutnick and (3) Mr. Lutnick, his spouse, his estate, any of his descendants, any of his relatives or any trust established for his benefit or for the benefit of his spouse, any of his descendants or any of his relatives.

Any holder of shares of our Class B common stock may pledge his, her or its shares of Class B common stock, as the case may be, to a pledgee pursuant to a bona fide pledge of the shares as collateral security for indebtedness due to the pledgee so long as the shares are not transferred to or registered in the name of the pledgee. In the event of any pledge of shares of Class B common stock meeting these requirements, the pledged shares will not be converted automatically into shares of Class A common stock. If the pledged shares of Class B common stock become subject to any foreclosure, realization or other similar action by the pledgee, they will be converted automatically into shares of Class A common stock upon the occurrence of that action. The automatic

---

## **Table of Contents**

conversion provisions in our certificate of incorporation may not be amended, altered, changed or repealed without the approval of the holders of a majority of the voting power of all outstanding shares of Class A common stock.

None of the shares of our Class A common stock or our Class B common stock has any pre-emptive or other subscription rights. There will be no redemption or sinking fund provisions applicable to shares of Class A common stock or Class B common stock. All outstanding shares of Class A common stock and Class B common stock are fully paid and non-assessable.

### ***Preferred Stock***

Our board of directors has the authority to cause us to issue preferred stock in one or more classes or series and to fix the designations, powers, preferences and rights, and the qualifications, limitations or restrictions thereof, including dividend rights, dividend rates, terms of redemption, redemption prices, conversion rights and liquidation preferences of the shares constituting any class or series, without further vote or action by the stockholders. The issuance of preferred stock pursuant to such “blank check” provisions may have the effect of delaying, deferring or preventing a change of control of us without further action by our stockholders and may adversely affect the voting and other rights of the holders of shares of our Class A common stock. At present, we have no plans to issue any preferred stock.

### **Anti-Takeover Effects of Delaware Law, Our Certificate of Incorporation and Bylaws and the Convertible Notes**

Some provisions of the Delaware General Corporation Law, which we refer to as the “DGCL,” our certificate of incorporation and bylaws and the convertible notes could make the following more difficult:

- acquisition of us by means of a tender offer;
- acquisition of us by means of a proxy contest or otherwise; or
- removal of our incumbent officers and directors.

These provisions, summarized below, are designed to discourage coercive takeover practices and inadequate takeover bids. These provisions are also primarily designed to encourage persons seeking to acquire control of us to first negotiate with our board of directors. We believe that the benefits of increased protection give us the potential ability to negotiate with the proponent of an unfriendly or unsolicited proposal to acquire or restructure us and outweigh the disadvantages of discouraging those proposals because negotiation of them could result in an improvement of their terms.

### ***Delaware Anti-Takeover Law***

We are subject to Section 203 of the DGCL. In general, Section 203 of the DGCL prohibits a publicly held Delaware corporation from engaging in a “business combination” with an “interested stockholder” for a period of three years following the date the person became an interested stockholder, unless the “business combination” or the transaction in which the person became an “interested stockholder” is approved in a prescribed manner. Generally, a “business combination” includes a merger, asset or stock sale or other transaction resulting in a financial benefit to the “interested stockholder.” An “interested stockholder” is a person who, together with affiliates and associates, owns 15% or more of a corporation’s outstanding voting stock, or was the owner of 15% or more of a corporation’s outstanding voting stock at any time within the prior three years, other than “interested stockholders” prior to the time our Class A common stock was traded on the Nasdaq Stock Market. The existence of this provision would be expected to have an anti-takeover effect with respect to transactions not approved in advance by our board of directors, including discouraging takeover attempts that might result in a premium over the market price for shares of Class A common stock.

### ***Certificate of Incorporation and Bylaws***

Our bylaws provide that special meetings of stockholders may be called only by the Chairman of our board of directors, or in the event the Chairman of our board of directors is unavailable, by the Chief Executive Officer or by the holders of a majority of the voting power of our Class B common stock, which is held by Cantor and CFGM. In addition, as discussed above, our certificate of incorporation permits us to issue “blank check” preferred stock.

Our bylaws require advance written notice prior to a meeting of our stockholders of a proposal or director nomination which a stockholder desires to present at such a meeting, which generally must be received by our Secretary not later than 120 days prior to the first anniversary of the date of our proxy statement for the preceding





## Table of Contents

year's annual meeting. Our bylaws provide that all amendments to our bylaws must be approved by either the holders of a majority of the voting power of all of our outstanding capital stock entitled to vote or by a majority of our board of directors.

### ***The Convertible Notes***

Pursuant to the terms of the convertible notes, holders of the convertible notes will have the right to require us to repurchase all or a portion of such notes upon the occurrence of a "fundamental change" (as defined in the respective Indentures governing the convertible notes) at 100% of their principal amount, plus accrued and unpaid interest. In addition, if a "make-whole fundamental change occurs" (as defined in the respective Indentures) prior to maturity of each of the convertible notes, under certain circumstances we will increase the conversion rate by a number of additional shares of our Class A common stock (as set forth in a table in the respective Indentures) for convertible notes converted in connection with such "make-whole fundamental change." The fundamental change purchase rights and the provisions requiring an increase to the conversion rate for conversions in connection with make-whole fundamental changes may in certain circumstances delay or prevent a takeover of us and/or the removal of incumbent management that might otherwise be beneficial to investors.

In addition, to the extent that Cantor or its affiliates continue to hold the 8.75% convertible notes, these provisions may enhance Cantor's control of us even if Cantor were to reduce its voting power in us by, among other things, converting shares of our Class B common stock held by it into shares of our Class A common stock or selling or distributing shares of Class A common stock.

### **Corporate Opportunity**

Our certificate of incorporation provides that no Cantor Company (as defined below) or any of the representatives (as defined below) of a Cantor Company will owe any fiduciary duty to, nor will any Cantor Company or any of their respective representatives be liable for breach of fiduciary duty to, us or any of our stockholders, including with respect to a corporate opportunity, except as described below. To the extent that any representative of a Cantor Company also serves as our director or officer, such person will owe fiduciary duties to us in his or her capacity as our director or officer. In addition, none of any Cantor Company or any of their respective representatives will owe any duty to refrain from engaging in the same or similar activities or lines of business as us, or doing business with any of our clients or customers.

If a third party presents a corporate opportunity (as defined below) to a person who is a representative of ours and a representative of a Cantor Company expressly and solely in such person's capacity as a representative of us, and such person acts in good faith in a manner consistent with the policy that such corporate opportunity belongs to us, then such person:

- will be deemed to have fully satisfied and fulfilled any fiduciary duty that such person has to us as a representative of us with respect to such corporate opportunity;

- will not be liable to us or any of our stockholders for breach of fiduciary duty by reason of such person's action or inaction with respect to the corporate opportunity;

- will be deemed to have acted in good faith and in a manner that such person reasonably believed to be in, and not opposed to, our best interests; and

- will be deemed not to have breached such person's duty of loyalty to us and our stockholders, and not to have derived an improper personal benefit therefrom.

A Cantor Company may pursue such a corporate opportunity if we decide not to.

If a corporate opportunity is not presented to a person who is both a representative of ours and a representative of a Cantor Company and, expressly and solely in such person's capacity as a representative of us, such person will not be obligated to present the corporate opportunity to us or to act as if such corporate opportunity belongs to us, and such person:

- will be deemed to have fully satisfied and fulfilled any fiduciary duty that such person has to us as a representative of us with respect to such corporate opportunity;

- will not be liable to us or any of our stockholders for breach of fiduciary duty by reason of such person's action or inaction with respect to such corporate opportunity;

## Table of Contents

will be deemed to have acted in good faith and in a manner that such person reasonably believed to be in, and not opposed to, our best interests; and

will be deemed not to have breached a duty of loyalty to us and our stockholders, and not to have derived an improper personal benefit therefrom.

For purposes of the above:

“Cantor Company” means Cantor and any of its affiliates (other than, if applicable, the Company and its affiliates);

“representatives” means, with respect to any person, the directors, officers, employees, general partners or managing member of such person; and

“corporate opportunity” means any business opportunity that we are financially able to undertake that is, from its nature, in our lines of business, is of practical advantage to us and is one in which we have an interest or a reasonable expectancy, and in which, by embracing the opportunity, the self-interest of a Cantor Company or their respective representatives will be brought into conflict with our self-interest.

### **Corporate Governance and Other Matters**

See our latest Annual Report on Form 10-K filed with the SEC, and any updates thereto contained in our subsequent Quarterly Reports on Form 10-Q and Current Reports on Form 8-K filed with the SEC, all of which we incorporate by reference herein.

### **Registration Rights**

We entered into a registration rights agreement with Cantor dated December 9, 1999 in connection with eSpeed’s formation. We also assumed in connection with the merger the obligations of BGC Partners OldCo under its registration rights agreement with Cantor dated March 31, 2008. For a description of such registration rights available to Cantor, see “Certain Relationships and Related Transactions, and Director Independence—Registration Rights Agreements” included in our Annual Report on Form 10-K for the year ended December 31, 2010, which we incorporate herein by reference. In connection with the issuance of the 8.75% convertible notes to Cantor, we entered into a registration rights agreement with Cantor dated April 1, 2010 with respect to shares of our Class A common stock acquired upon conversion of the notes. For a description of these registration rights available to Cantor, see “Certain Relationships and Related Transactions, and Director Independence—Convertible Notes” in our Annual Report on Form 10-K for the year ended December 31, 2010, which we incorporate herein by reference.

In addition, pursuant to the capped call transactions that we entered into in connection with the issuance of the 4.50% convertible notes, we have agreed to register under the Securities Act shares of our Class A common stock acquired by the counterparties to the capped call transactions for hedging purposes, if in the good faith reasonable judgment of such counterparties, based upon advice of legal counsel, such shares cannot be sold without registration under the Securities Act.

### **Transfer Agent and Registrar**

The transfer agent and registrar for our Class A common stock is American Stock Transfer & Trust Company, LLC.

**CERTAIN U.S. FEDERAL TAX CONSIDERATIONS  
FOR NON-U.S. HOLDERS OF CLASS A COMMON STOCK**

The following is a general discussion of certain U.S. federal income tax considerations with respect to the acquisition, ownership and disposition of shares of our Class A common stock applicable to non-U.S. holders who acquire such shares in this offering and hold such shares as a capital asset (generally, property held for investment). For purposes of this discussion, a “non-U.S. holder” means a beneficial owner of shares of Class A common stock (other than an entity or arrangement that is treated as a partnership for U.S. federal income tax purposes) that is not, for U.S. federal income tax purposes, any of the following:

- a citizen or resident of the United States;
- a corporation created or organized in the United States or under the laws of the United States, any state thereof or the District of Columbia;
- an estate, the income of which is includible in gross income for U.S. federal income tax purposes regardless of its source; or
- a trust if (a) a court within the United States is able to exercise primary supervision over the administration of the trust and one or more U.S. persons have the authority to control all substantial decisions of the trust or (b) such trust has made a valid election to be treated as a U.S. person for U.S. federal income tax purposes.

This discussion is based upon current provisions of the Internal Revenue Code of 1986, as amended, which we refer to as the “Code,” Treasury regulations promulgated thereunder, judicial opinions, published positions of the Internal Revenue Service, and other applicable authorities, all of which are subject to change (possibly with retroactive effect). This discussion does not address all aspects of U.S. federal income taxation that may be important to a particular non-U.S. holder in light of that non-U.S. holder’s individual circumstances, nor does it address any aspects of U.S. federal estate and gift, state, local, or non-U.S. taxes. This discussion may not apply, in whole or in part, to particular non-U.S. holders in light of their individual circumstances or to holders subject to special treatment under the U.S. federal income tax laws (such as insurance companies, tax-exempt organizations, financial institutions, brokers or dealers in securities, “controlled foreign corporations,” “passive foreign investment companies,” non-U.S. holders that hold shares of our Class A common stock as part of a straddle, hedge, conversion transaction or other integrated investment, and certain U.S. expatriates).

If a partnership (or other entity or arrangement treated as a partnership for U.S. federal income tax purposes) holds shares of our Class A common stock, the tax treatment of a partner will generally depend on the status of the partner and the activities of the partnership. Partners of a partnership holding shares of Class A common stock should consult their own tax advisors as to the particular U.S. federal income tax consequences applicable to them.

**THIS SUMMARY IS FOR GENERAL INFORMATION ONLY AND IS NOT INTENDED TO CONSTITUTE A COMPLETE DESCRIPTION OF ALL TAX CONSEQUENCES FOR NON-U.S. HOLDERS RELATING TO THE ACQUISITION, OWNERSHIP AND DISPOSITION OF SHARES OF OUR CLASS A COMMON STOCK. PROSPECTIVE HOLDERS OF SHARES OF CLASS A COMMON STOCK SHOULD CONSULT WITH THEIR OWN TAX ADVISORS REGARDING THE TAX CONSEQUENCES TO THEM (INCLUDING THE APPLICATION AND EFFECT OF ANY STATE, LOCAL AND FOREIGN INCOME AND OTHER TAX LAWS) OF THE ACQUISITION, OWNERSHIP AND DISPOSITION OF SUCH SHARES.**

#### **Dividends**

In general, any distribution we make to a non-U.S. holder with respect to its shares of our Class A common stock that constitutes a dividend for U.S. federal income tax purposes will be subject to U.S. withholding tax at a rate of 30% of the gross amount, unless the non-U.S. holder is eligible for a reduced rate of withholding tax under an applicable tax treaty and the non-U.S. holder provides proper certification of its eligibility for such reduced rate. A distribution will constitute a dividend for U.S. federal income tax purposes to the extent of our current or accumulated earnings and profits as determined for U.S. federal income tax purposes. To the extent that a distribution exceeds our current or accumulated earnings and profits, the excess will constitute a return of capital that is applied against, and will reduce, the holder’s basis in its shares, but not below zero, and then will be treated as gain from the sale or exchange of such shares.

## **Table of Contents**

Dividends we pay to a non-U.S. holder that are effectively connected with its conduct of a trade or business within the United States (and, if a tax treaty applies, are attributable to a U.S. permanent establishment of such non-U.S. holder) will not be subject to U.S. withholding tax, as described above, if the non-U.S. holder complies with applicable certification and disclosure requirements. Instead, such dividends generally will be subject to U.S. federal income tax on a net income basis in the same manner as if the non-U.S. holder were a resident of the United States. Dividends received by a foreign corporation that are effectively connected with its conduct of trade or business within the United States may be subject to an additional branch profits tax at a rate of 30% (or such lower rate as may be specified by an applicable tax treaty).

### **Gain on Sale or Other Disposition of Shares of Our Class A Common Stock**

In general, a non-U.S. holder will not be subject to U.S. federal income tax on any gain realized upon the sale or other disposition of the non-U.S. holder's shares of our Class A common stock unless:

the gain is effectively connected with a trade or business carried on by the non-U.S. holder within the United States (and, if required by an applicable tax treaty, is attributable to a U.S. permanent establishment of such non-U.S. holder);

the non-U.S. holder is an individual and is present in the United States for 183 days or more in the taxable year of disposition and certain other conditions are met; or

we are or have been a U.S. real property holding corporation, which we refer to as an "USRPHC," for U.S. federal income tax purposes at any time within the shorter of the five-year period preceding such disposition or such non-U.S. holder's holding period of the shares. We believe we are not, and do not anticipate becoming, a USRPHC for U.S. federal income tax purposes. If we were or were to become a USRPHC at any time during the applicable period, however, any gain recognized on a sale or other disposition of shares by a non-U.S. holder that did not own (directly, indirectly or constructively) more than 5% of the Class A common stock during the applicable period would not be subject to U.S. federal income tax, provided that Class A common stock is "regularly traded on an established securities market" (within the meaning of Section 897(c)(3) of the Code).

Gain that is effectively connected with the conduct of a trade or business in the United States (or so treated) generally will be subject to U.S. federal income tax, net of certain deductions, at regular U.S. federal income tax rates. If the non-U.S. holder is a foreign corporation, the branch profits tax described above also may apply to such effectively connected gain. An individual non-U.S. holder who is subject to U.S. federal income tax because the non-U.S. holder was present in the United States for 183 days or more during the year of sale or other disposition of shares of our Class A common stock will be subject to a flat 30% tax on the gain derived from such sale or other disposition, which may be offset by United States source capital losses.

### **Backup Withholding, Information Reporting and Other Reporting Requirements**

We must report annually to the Internal Revenue Service and to each non-U.S. holder of shares of our Class A common stock the amount of dividends paid to, and the tax withheld with respect to, each non-U.S. holder. These reporting requirements apply regardless of whether withholding was reduced or eliminated by an applicable tax treaty. Copies of this information reporting may also be made available under the provisions of a specific tax treaty or agreement with the tax authorities in the country in which the non-U.S. holder resides or is established.

A non-U.S. holder will generally be subject to backup withholding with respect to dividends paid on its shares of our Class A common stock to such holder unless such holder certifies under penalties of perjury that, among other things, it is a non-U.S. holder (and the payor does not have actual knowledge or reason to know that such holder is a U.S. person as defined under the Code).

Information reporting and backup withholding generally are not required with respect to the amount of any proceeds from the sale or other disposition of shares of our Class A common stock by a non-U.S. holder outside the United States through a foreign office of a foreign broker that does not have certain specified connections to the

---

## Table of Contents

United States. However, if a non-U.S. holder sells or otherwise disposes of its shares through a U.S. broker or the U.S. offices of a foreign broker, the broker will generally be required to report the amount of proceeds paid to the non-U.S. holder to the Internal Revenue Service and also backup withhold on that amount unless such non-U.S. holder provides appropriate certification to the broker of its status as a non-U.S. person or otherwise establishes an exemption (and the payor does not have actual knowledge or reason to know that such holder is a U.S. person as defined under the Code). Information reporting will also apply if a non-U.S. holder sells or otherwise dispose of its shares of Class A common stock through a foreign broker deriving more than a specified percentage of its income from U.S. sources or having certain other connections to the United States, unless such broker has documentary evidence in its records that such non-U.S. holder is a non-U.S. person and certain other conditions are met, or such non-U.S. holder otherwise establishes an exemption (and the payor does not have actual knowledge or reason to know that such holder is a U.S. person as defined under the Code).

Backup withholding is not an additional tax. Any amounts withheld under the backup withholding rules from a payment to a non-U.S. holder can be credited against the non-U.S. holder's U.S. federal income tax liability, if any, or refunded, provided that the required information is furnished to the Internal Revenue Service in a timely manner. Non-U.S. holders should consult their tax advisors regarding the application of the information reporting and backup withholding rules to them.

### **Legislative Developments Potentially Affecting Taxation of Shares of Our Class A Common Stock Held by or Through Foreign Entities**

Legislation enacted by the United States Congress will generally impose a withholding tax of 30% on dividends paid on shares of our Class A common stock and the gross proceeds of a sale or other disposition of such shares paid to a foreign financial institution, unless such institution enters into an agreement with the U.S. government to collect and provide to the U.S. tax authorities substantial information regarding U.S. account holders of such institution (which would include certain equity and debt holders of such institution, as well as certain account holders that are foreign entities with U.S. owners). The legislation will also generally impose a withholding tax of 30% on dividends paid on the shares and the gross proceeds of a sale or other disposition of such shares paid to a non-financial foreign entity unless such entity provides the withholding agent with a certification identifying the direct and indirect U.S. owners of the entity. Under certain circumstances, a non-U.S. holder of shares may be eligible for refunds or credits of such taxes. The legislation will be effective for amounts paid after December 31, 2012. Investors are encouraged to consult with their own tax advisors regarding the possible implications of this legislation on their investment in shares of Class A common stock.

## PLAN OF DISTRIBUTION

Of the 9,440,317 shares of our Class A common stock included in this prospectus, an aggregate of 3,315,728 shares have already been distributed by Cantor and may be offered and sold through this prospectus by the Individual Selling Stockholders identified in this prospectus, and 5,680,903 shares included in this prospectus may be offered and sold under the registration statement (1) either by Cantor at the direction and for the account of the Individual Selling Stockholders holding the related distribution rights, or by such Individual Selling Stockholders as distributees of the shares from Cantor, which Individual Selling Stockholders in each such case will be identified in a prospectus supplement to the extent required prior to the time of any offer or sale of such Individual Selling Stockholders' shares pursuant to the registration statement, or (2) by the Charitable Organizations, which will be identified in a prospectus supplement to the extent required prior to the time of any offer or sale of such Charitable Organizations' shares pursuant to the registration statement. Although nominally listed as a Selling Stockholder, Cantor will not be selling any shares for its own account through the registration statement. The remaining 443,686 shares of Class A common stock included in this prospectus were donated by us to The Cantor Fitzgerald Relief Fund on May 9, 2011 and may be offered and sold by the Relief Fund through this prospectus.

The primary purpose of the registration statement is to meet the expectations of the Individual Selling Stockholders that they will receive registered shares of our Class A common stock distributed by Cantor to them pursuant to the distribution rights. Additional purposes of the registration statement are to enable (1) the Charitable Organizations to offer and sell any shares of Class A common stock donated by Cantor to them and (2) the Relief Fund to offer and sell the shares of Class A common stock donated by us to The Cantor Fitzgerald Relief Fund on May 9, 2011. There can be no assurances that any Selling Stockholder will sell any or all of such shares of Class A common stock pursuant to the registration statement.

The Selling Stockholders may offer and sell the shares of our Class A common stock included in this prospectus from time to time directly to purchasers, through underwriters, to dealers, or through agents, at fixed prices, which may be changed, at market prices prevailing at the time of sale, at prices related to the prevailing market prices, or at privately negotiated prices.

The Selling Stockholders may offer and sell some or all of the shares of our Class A common stock included in this prospectus by or through a broker-dealer in one or more, or a combination, of the following methods:

- purchases by the broker-dealer as principal, and resale by the broker-dealer for its account;

- a block trade in which the broker-dealer may attempt to sell the shares as agent, but may resell all or a portion of the block as principal in order to facilitate the transaction; or

- transactions in which the broker-dealer as agent solicits purchasers and ordinary brokerage transactions by the broker-dealer as agent.

The Selling Stockholders may enter into hedging, option, loan, pledge, or other types of derivative or monetization transactions with respect to the shares of our Class A common stock included in this prospectus, such as lending or pledging such shares to a broker-dealer, bank, or other third party, which may become a Selling Stockholder and sell such shares under the registration statement.

The Selling Stockholders may directly make offers to sell the shares of our Class A common stock included in this prospectus to, or solicit offers to purchase the shares of Class A common stock from, purchasers from time to time. If required, the prospectus supplement related to any such offering by the Selling Stockholders will set forth the terms of such offering.

The Selling Stockholders may sell the shares of our Class A common stock included in this prospectus from time to time to one or more underwriters, which would purchase the shares as principal for resale to purchasers, on a firm-commitment or other basis. If the Selling Stockholders sell shares of Class A common stock to underwriters, they may execute an underwriting agreement with them at the time of sale and will name them in the prospectus supplement related to any such offering. In connection with those sales, underwriters may be deemed to have received compensation from the Selling Stockholders in the form of underwriting discounts or commissions and may also receive commissions from purchasers of the shares of Class A common stock for which they may act as agents. Underwriters may resell shares of Class A common stock to or through dealers, and those dealers may receive compensation in the form of discounts, concessions or commissions from the underwriters and/or commissions from purchasers for which they may act as agents. The prospectus supplement related to any such





## Table of Contents

offering will include any required information about underwriting compensation to be paid to underwriters, and any discounts, concessions or commissions underwriters allow to participating dealers, in connection with such offering.

From time to time, the Selling Stockholders may sell the shares of our Class A common stock included in this prospectus to one or more dealers acting as principals. If required, the prospectus supplement related to any such offering will name such dealers as Selling Stockholders, and will include information about any compensation paid to the dealers, in such offering. The dealers, which may be deemed to be “underwriters” as that term is defined in the Securities Act, may then resell the shares to purchasers.

The Selling Stockholders may also designate broker-dealers as agents from time to time to solicit offers from purchasers to purchase the shares of our Class A common stock included in this prospectus, or to sell such shares in ordinary brokerage transactions, on their behalf. If required, the prospectus supplement related to any such offering will name such agents, and will include information about any commissions paid to the agents, in such offering. Agents may be deemed to be “underwriters” as that term is defined in the Securities Act in such offering.

Each of the Selling Stockholders may be deemed to be an “underwriter” as that term is defined in the Securities Act, and any profit on the sale of shares of our Class A common stock included in this prospectus by such Selling Stockholder may be deemed to be “underwriting discounts or commissions” under the Securities Act. We have informed the Selling Stockholders that the anti-manipulative provisions of Regulation M promulgated under the Exchange Act may apply to their sales of such shares in the market or otherwise.

In connection with a firm commitment offering, the underwriters may purchase and sell shares of our Class A common stock in the open market. These transactions may include short sales, stabilizing transactions and purchases to cover positions created by short sales. Short sales involve the sale by the underwriters of a greater number of shares of Class A common stock than they are required to purchase in the offering. Stabilizing transactions consist of certain bids or purchases made for the purpose of preventing or retarding a decline in the market price of Class A common stock while the offering is in progress. The underwriters also may impose a penalty bid. This occurs when a particular underwriter repays to the underwriters a portion of the underwriting discount received by it because the underwriters have repurchased shares of Class A common stock sold by or for the account of that underwriter in stabilizing or short-covering transactions. These activities by the underwriters may stabilize, maintain or otherwise affect the market price of Class A common stock. As a result, the price of Class A common stock may be higher than the price that otherwise might exist in the open market. If these activities are commenced, they may be discontinued by the underwriters at any time. These transactions may be effected on or through the Nasdaq Global Select Market, the existing trading market for Class A common stock, or in the over-the-counter market or otherwise.

The Selling Stockholders or their underwriters, broker-dealers, or agents may make sales of shares of our Class A common stock included in this prospectus that are deemed to be an at-the-market offering as defined in Rule 415 promulgated under the Securities Act, which includes sales of such shares made directly on or through the Nasdaq Global Select Market, the existing trading market for Class A common stock, or in the over-the-counter market or otherwise.

Any underwriters, broker-dealers, or agents offering the shares of our Class A common stock included in this prospectus will not confirm sales to any accounts over which they or their affiliates exercise discretionary authority without the prior approval of the customer.

Underwriters, broker-dealers, agents and other persons may be entitled, under agreements that they may enter into with the Selling Stockholders or the Company, to indemnification by them against certain liabilities, including liabilities under the Securities Act, in connection with an offering of the shares of our Class A common stock included in this prospectus.

We have agreed to pay the expenses of the registration of the shares of our Class A common stock offered and sold by the Selling Stockholders under the registration statement, including, but not limited to, all registration and filing fees and fees and expenses of our counsel and our accountants. The Selling Stockholders will pay any underwriting discounts, commissions and transfer taxes applicable to shares of Class A common stock sold by them.

In return for our agreement to include in the registration statement the shares of our Class A common stock to be offered for sale by the Selling Stockholders and to pay the expenses of



---

## [Table of Contents](#)

the registration of such shares, we may require that the Selling Stockholders be subject to any restrictions on sale imposed by us from time to time, including, without limitation, with respect to blackout periods for sales, volume limitations, manner of sale restrictions or otherwise.

As a result of the requirements of the Financial Industry Regulatory Authority, which we refer to as “FINRA,” the maximum discount, concession or commission to be received by any FINRA member or independent broker-dealer may not be greater than eight percent (8%) of the gross proceeds received by the Selling Stockholders for the sale of any of the shares of our Class A common stock included in this prospectus.

Any of the shares of our Class A common stock included in this prospectus held by the Selling Stockholders that qualify for sale pursuant to Rule 144 under the Securities Act may be sold under Rule 144 rather than pursuant to the registration statement. If any Selling Stockholder sells pursuant to Rule 144, such Selling Stockholder will not be deemed to be an “underwriter” as that term is defined in the Securities Act and will not be subject to the prospectus delivery requirements of the Securities Act with respect to such sales.

## LEGAL MATTERS

The validity of the shares of our Class A common stock included in this prospectus have been passed upon for us by Stephen M. Merkel, our Executive Vice President, General Counsel and Secretary. Mr. Merkel's address is c/o BGC Partners, Inc., 499 Park Avenue, New York, New York 10022. As of August 12, 2011, Mr. Merkel owned (i) 35,846 shares of Class A common stock held directly by Mr. Merkel, (ii) 333,000 shares of Class A common stock subject to options currently exercisable or exercisable within 60 days, (iii) 8,532 shares of Class A common stock held in Mr. Merkel's 401(k) account, and (iv) 2,250 shares of Class A common stock beneficially owned by Mr. Merkel's spouse. Mr. Merkel is also the Executive Managing Director, General Counsel and Secretary of Cantor, a limited partner in Cantor, and the Vice President and Secretary of CFGM.

## EXPERTS

Ernst & Young LLP, our independent registered public accounting firm, has audited the consolidated financial statements and financial statement schedule of BGC Partners, Inc. included in our Annual Report on Form 10-K for the fiscal year ended December 31, 2010, and the effectiveness of internal control over financial reporting of BGC Partners, Inc. as of December 31, 2010, as stated in their reports thereon, included therein, which are incorporated by reference in this prospectus. Such consolidated financial statements and financial statement schedule of BGC Partners, Inc. are incorporated by reference in reliance upon the report of such firm given upon their authority as experts in accounting and auditing.

## WHERE YOU CAN FIND MORE INFORMATION

We file annual, quarterly and current reports, proxy statements and other information with the SEC. You may read and copy any document we file at the SEC's Public Reference Room located at One Station Place, 100 F Street, N.E., Washington, D.C. 20549. You can also request copies of the documents, upon payment of a duplicating fee, by writing the Public Reference Section of the SEC. Please call the SEC at 1-800-SEC-0330 for further information on the Public Reference Room. These filings are also available to the public from the SEC's website at [www.sec.gov](http://www.sec.gov).

Our website address is [www.bgcpartners.com](http://www.bgcpartners.com). Through our website, we make available, free of charge, the following documents as soon as reasonably practicable after they are electronically filed with, or furnished to, the SEC: our Annual Reports on Form 10-K; our proxy statements for our annual and special stockholder meetings; our Quarterly Reports on Form 10-Q; our Current Reports on Form 8-K; Forms 3, 4 and 5 and Schedules 13D filed on behalf of Cantor, our directors and our executive officers; and amendments to those documents. The information contained on, or that may be accessed through, our website is not part of, and is not incorporated into, this prospectus.

## DOCUMENTS INCORPORATED BY REFERENCE

The SEC allows us to "incorporate by reference" into this prospectus the documents that we file with the SEC, which means that we can disclose important information to you by referring you to those documents. The information incorporated by reference is considered to be part of this prospectus. We incorporate by reference into this prospectus the following documents:

- our Annual Report on Form 10-K for the fiscal year ended December 31, 2010 filed on March 16, 2011;
- our Quarterly Report on Form 10-Q for the fiscal quarter ended March 31, 2011 filed on May 10, 2011;
- our Quarterly Report on Form 10-Q for the fiscal quarter ended June 30, 2011 filed on August 8, 2011;
- our Current Report on Form 8-K filed on February 17, 2011 (other than as indicated therein);
- our Current Report on Form 8-K filed on February 23, 2011;
- our Current Report on Form 8-K filed on May 5, 2011 (other than as indicated therein);
- our Current Report on Form 8-K filed on June 17, 2011 (other than as indicated therein);
- our Current Report on Form 8-K filed on June 28, 2011;
- our Current Report on Form 8-K filed on July 7, 2011;
- our Current Report on Form 8-K filed on July 18, 2011;
- our Current Report on Form 8-K (with respect to Items 2.02 and 9.01) filed on July 25, 2011 (other than as indicated therein);
- our Current Report on Form 8-K (with respect to Items 8.01 and 9.01) filed on July 25, 2011;
- our Current Report on Form 8-K filed on July 26, 2011;
- our Current Report on Form 8-K filed on August 1, 2011;
- our Registration Statement on Form 8-A filed on November 18, 1999;
- our Amendment No. 1 to Registration Statement on Form 8-A/A filed on March 7, 2001; and
- all documents filed by us with the SEC pursuant to Section 13(a), 13(c), 14 or 15(d) of the Exchange Act (Commission File Number 0-28191) after the date of this prospectus and before the completion of the offerings of the shares of our Class A common stock described in this prospectus.

Any statement contained in this prospectus or any subsequent prospectus supplement, or in a document incorporated or deemed to be incorporated by reference herein or therein, shall be deemed to be modified or superseded to the extent that a statement contained herein, or in any subsequent prospectus supplement or in any subsequently filed document that also is incorporated or deemed to be incorporated by reference herein or therein, modifies or supersedes such statement. Any statement so modified or superseded shall not be deemed, except as so modified or superseded, to constitute a part of this prospectus or any prospectus supplement.

You may obtain copies of these documents, at no cost to you, from our website ([www.bgcpartners.com](http://www.bgcpartners.com)), or by writing or telephoning us at the following address:

Investor Relations  
BGC Partners, Inc.  
499 Park Avenue  
New York, New York 10022  
(212) 610-2426