

SECURITIES AND EXCHANGE COMMISSION

FORM 10-K/A

Annual report pursuant to section 13 and 15(d) [amend]

Filing Date: **2009-04-16** | Period of Report: **2008-12-31**
SEC Accession No. **0001104659-09-024459**

([HTML Version](#) on secdatabase.com)

FILER

VISTA GOLD CORP

CIK: **783324** | IRS No.: **000000000** | Fiscal Year End: **1231**
Type: **10-K/A** | Act: **34** | File No.: **001-09025** | Film No.: **09752544**
SIC: **1040** Gold and silver ores

Business Address
7961 SHAFFER PKWY
SUITE 5
LITTLETOWN CO 80127
3036292450

**UNITED STATES
SECURITIES AND EXCHANGE COMMISSION**

WASHINGTON, D.C. 20549

FORM 10-K/A

(Amendment No. 1)

**ANNUAL REPORT PURSUANT TO SECTION 13 OR 15(d) OF THE SECURITIES
EXCHANGE ACT OF 1934**

For the fiscal year ended December 31, 2008

OR

**TRANSITION REPORT PURSUANT TO SECTION 13 OR 15(d) OF THE SECURITIES
EXCHANGE ACT OF 1934**

For the transition period from to

Commission File Number 1-9025

VISTA GOLD CORP.

(Exact Name of Registrant as Specified in its Charter)

Yukon Territory

(State or other Jurisdiction of Incorporation or Organization)

98-0542444

(IRS Employer
Identification Number)

Suite 5, 7961 Shaffer Parkway

Littleton, Colorado

(Address of Principal Executive Offices)

80127

(Zip Code)

(720) 981-1185

(Registrant's Telephone Number, Including Area Code)

Securities registered pursuant to Section 12(b) of the Act:

Title of Each Class

Name of Each Exchange on Which Registered

Common Shares without par value

NYSE Amex
Toronto Stock Exchange

Securities registered pursuant to Section 12(g) of the Act: **None.**

Indicate by check mark if the registrant is a well-known seasoned issuer, as defined in Rule 405 of the Securities Act: Yes
No

Indicate by check mark if the registrant is not required to file reports pursuant to Section 13 or Section 15(d) of the Exchange Act: Yes No

Indicate by check mark whether the registrant: (1) has filed all reports required to be filed by Section 13 or 15(d) of the Securities Exchange Act of 1934 during the preceding 12 months (or for such shorter period that the registrant was required to file such reports); and (2) has been subject to the filing requirements for the past 90 days: Yes No

Indicate by check mark if disclosure of delinquent filers pursuant to Item 405 of Regulation S-K is not contained herein, and will not be contained, to the best of registrant's knowledge, in definitive proxy or information statements incorporated by reference in Part III of this Form 10-K or any amendment to this Form 10-K:

Indicate by check mark whether the registrant is a large accelerated filer, an accelerated filer, or a non-accelerated filer. See definition of "accelerated filer and large accelerated filer" in Rule 12b-2 of the Exchange Act:
Large Accelerated Filer Accelerated Filer Non-accelerated filer

Indicate by check mark whether the registrant is a shell company (as defined in Rule 12b-2 of the Exchange Act):
Yes No

State the aggregate market value of the voting and non-voting common equity held by non-affiliates computed by reference to the price at which the common equity was last sold, or the average bid and asked price of such common equity, as of the last business day of the registrant's most recently completed second fiscal quarter:

As of June 30, 2008 being the last business day of the Registrant's most recently completed second fiscal quarter, the aggregate market value of outstanding Common Shares of the registrant held by non-affiliates was approximately \$126,000,000.

Outstanding Common Shares: As of March 11, 2009, 34,475,829 Common Shares of the registrant were outstanding.

Documents incorporated by reference: To the extent herein specifically referenced in Part III, portions of the registrant's definitive Proxy Statement for the 2009 Annual General Meeting of Shareholders. See Part III.

EXPLANATORY NOTE

This amendment number one on Form 10-K/A (this "Amendment") amends the Company's Annual Report on Form 10-K for the year ended December 31, 2008, as filed with the Securities and Exchange Commission (the "SEC") on March 13, 2009 (the "Original Report") and is being made to clarify certain information and disclosures as follows:

- **Item 2 - Description of Property** - The Company has:
 - (a) corrected an inadvertent error related to the disclosed mineralized material and inferred mineral resources for its Long Valley project under the sub-heading "Long Valley - *Geology and Mineralization*";
 - (b) clarified and expanded the Company's disclosure on its Paredones Amarillos project under the sub-headings "Paredones Amarillos - *History*," "Paredones Amarillos - *Infrastructure and Access*," "Paredones Amarillos - *Climate*," "Paredones

Amarillos - *Local Resources and Infrastructure*,” “Paredones Amarillos - *Geology and Mineralization*” and “Paredones Amarillos - *Permitting Status*”;

- (c) clarified and expanded the Company’ s disclosure on its Mt. Todd project under the sub-headings “Mt. Todd - *Access*,” “Mt. Todd - *Climate*,” “Mt. Todd - *Local Resources and Infrastructure*,” and “Mt. Todd - *Geology and Mineralization*”;
- (d) clarified and expanded the Company’ s disclosure on its Awak Mas project under the sub-headings “Awak Mas - *Location*,” “Awak Mas - *Access*,” “Awak Mas - *Climate and Infrastructure*,” and “Awak Mas - *Geology and Mineralization*”;
- (e) clarified and expanded the Company’ s disclosure on its Yellow Pine project under the sub-headings “Yellow Pine - *Access*,” “Yellow Pine - *Climate and Infrastructure*,” “Yellow Pine - *History*,” and “Yellow Pine - *Geology and Mineralization*”;
- (f) clarified and expanded the Company’ s disclosure on its Long Valley project under the sub-headings “Long Valley - *Access*,” “Long Valley - *Climate and Infrastructure*,” and “Long Valley - *Geology and Mineralization*”;
- (g) clarified and expanded the Company’ s disclosure on its Guadalupe de Los Reyes project under the sub-headings “Guadalupe de Los Reyes - *Access*,” “Guadalupe de Los Reyes - *Climate and Infrastructure*,” and “Guadalupe de Los Reyes - *Geology and Mineralization*.”

Aside from the foregoing clarifications, this Amendment has not been amended or updated for events or information subsequent to the date of filing of the Original Report. Accordingly, this Amendment should be read in conjunction with the Company’ s Original Report and other filings made with the SEC.

The Company anticipates that the costs stemming from this Amendment will not have a material effect on the Company. No adjustments are necessary for financial statements for periods subsequent to December 31, 2008. The filing of this Amendment shall not be deemed an admission that the Original Report, when made, included any known, untrue statement of material fact or knowingly omitted to state a material fact necessary to make a statement not misleading.

For financial statements and a discussion of events and developments subsequent to December 31, 2008, see the Company’ s subsequent filings made with the SEC.

CAUTIONARY NOTE TO U.S. INVESTORS REGARDING RESERVE AND RESOURCE ESTIMATES

The terms “mineral reserve”, “proven mineral reserve” and “probable mineral reserve” are Canadian mining terms as defined in accordance with Canadian National Instrument 43-101–Standards of Disclosure for Mineral Projects (“NI 43-101”) and the Canadian Institute of Mining, Metallurgy and Petroleum (the “CIM”)–*CIM Definition Standards on Mineral Resources and Mineral Reserves*, adopted by the CIM Council, as amended. These definitions differ from the definitions in the United States Securities and Exchange Commission (“SEC”) Industry Guide 7 (“SEC Industry Guide 7”) under the Securities Act. Under SEC Industry Guide 7 standards, a “final” or “bankable” feasibility study is required to report reserves, the three-year historical average price is used in any reserve or cash flow analysis to designate reserves and the primary environmental analysis or report must be filed with the appropriate governmental authority.

In addition, the terms “mineral resource”, “measured mineral resource”, “indicated mineral resource” and “inferred mineral resource” are defined in and required to be disclosed by NI 43-101; however, these terms are not defined terms under SEC Industry Guide 7 and are normally not permitted to be used in reports and registration statements filed with the SEC. Investors are cautioned not to assume that any part or all of mineral deposits in these categories will ever be converted into reserves. “Inferred mineral resources” have a great amount of uncertainty as to their existence, and great uncertainty as to their economic and legal feasibility. It cannot be assumed that all, or any part, of an inferred mineral resource will ever be upgraded to a higher category. Under Canadian rules, estimates of inferred mineral resources may not form the basis of feasibility or pre-feasibility studies, except in rare cases. Investors are cautioned not to assume that all or any part of an inferred mineral resource exists or is economically or legally mineable. Disclosure of “contained ounces” in a resource is permitted disclosure

under Canadian regulations; however, the SEC normally only permits issuers to report mineralization that does not constitute “reserves” by SEC standards as in place tonnage and grade without reference to unit measures.

Accordingly, information contained in this report and the documents incorporated by reference herein contain descriptions of our mineral deposits that may not be comparable to similar information made public by U.S. companies subject to the reporting and disclosure requirements under the United States federal securities laws and the rules and regulations thereunder.

GLOSSARY

“*assay*” means to test ores or minerals by chemical or other methods for the purpose of determining the amount of valuable metals contained.

“*breccia*” means rock consisting of fragments, more or less angular, in a matrix of finer-grained material or of cementing material.

“*claim*” means a mining title giving its holder the right to prospect, explore for and exploit minerals within a defined area.

“*cut-off grade*” means the grade below which mineralized material or ore will be considered waste.

“*deposit*” means an informal term for an accumulation of mineral ores.

“*diamond drill*” means a rotary type of rock drill that cuts a core of rock and is recovered in long cylindrical sections, two centimeters or more in diameter.

“*fault*” means a fracture in rock along which there has been displacement of the two sides parallel to the fracture.

“*heap leach*” means a gold extraction method that percolates a cyanide solution through ore heaped on an impermeable pad or base.

“*indicated mineral resource*” and “*indicated resource*” means “*indicated mineral resource*” as defined by the Canadian Institute of Mining, Metallurgy and Petroleum and is that part of a mineral resource for which quantity, grade or quality, densities, shape and physical characteristics, can be estimated with a level of confidence sufficient to allow the appropriate application of technical and economic parameters, to support mine planning and evaluation of the economic viability of the deposit. The estimate is based on detailed and reliable exploration and testing information gathered through appropriate techniques from locations such as outcrops, trenches, pits, workings and drill holes that are spaced closely enough for geological and grade continuity to be reasonably assumed.

3

“*inferred mineral resource*” and “*inferred resource*” means “*inferred mineral resource*” as defined by the Canadian Institute of Mining, Metallurgy and Petroleum in the CIM Definition Standards and is that part of a mineral resource for which quantity and grade or quality can be estimated on the basis of geological evidence and limited sampling and reasonably assumed, but not verified, geological and grade continuity. The estimate is based on limited information and sampling gathered through appropriate techniques from locations such as outcrops, trenches, pits, workings and drill holes.

“*measured mineral resource*” and “*measured resources*” means “*measured mineral resource*” as defined by the Canadian Institute of Mining, Metallurgy and Petroleum in the CIM Definition Standards and is that part of a mineral resource for which quantity, grade or quality, densities, shape, physical characteristics are so well established that they can be estimated with confidence sufficient to allow the appropriate application of technical and economic parameters, to support production planning and evaluation of the economic viability of the deposit. The estimate is based on detailed and reliable exploration, sampling and testing information gathered through appropriate techniques from locations such as outcrops, trenches, pits, workings and drill holes that are spaced closely enough to confirm both geological and grade continuity.

“*mineralization*” means the concentration of metals within a body of rock.

“*mineralized material*” under SEC Industry Guide 7 is a mineralized body which has been delineated by appropriately spaced drilling and/or underground sampling to support a sufficient tonnage and average grade of metal(s). Such a deposit does not qualify as a reserve, until a comprehensive evaluation based upon unit cost, grade, recoveries, and other material factors conclude legal and economic feasibility. Mineralized material is equivalent to measured plus indicated mineral resources but does not include inferred mineral resources, which terms are defined by the Canadian Institute of Mining, Metallurgy and Petroleum.

“*ore*” means material containing minerals that can be economically extracted.

“*oxide*” means mineralized rock in which some of the original minerals have been oxidized (*i.e.*, combined with oxygen). Oxidation tends to make the ore more porous and permits a more complete permeation of cyanide solutions so that minute particles of gold in the interior of the minerals will be more readily dissolved.

“*preliminary feasibility study*” as defined by the Canadian Institute of Mining, Metallurgy and Petroleum and by NI 43-101 is a comprehensive study of the viability of a mineral project that has advanced to a stage where the mining method, in the case of underground mining, or the pit configuration, in the case of an open pit, has been established, and where an effective method of mineral processing has been determined. This study must include a financial analysis based on reasonable assumptions of technical, engineering, operating, economic, social and environmental factors and the evaluation of other relevant factors which are sufficient for a Qualified Person acting reasonably, to determine if all or part of the mineral resource may be classified as a mineral reserve.

“*probable reserves*” under SEC Industry Guide 7 means reserves for which quantity and grade and/or quality are computed from information similar to that used for proven reserves, but the sites for inspection, sampling and measurement are farther apart or are otherwise less adequately spaced. The degree of assurance, although lower than that for proven reserves, is high enough to assume continuity between points of observation.

“*probable mineral reserves*” as defined by the Canadian Institute of Mining, Metallurgy and Petroleum in the CIM Definition Standards is the economically mineable part of an indicated mineral resource and, in some circumstances, a measured mineral resource demonstrated by at least a preliminary feasibility study. This study must include adequate information on mining, processing, metallurgical, economic and other relevant factors that demonstrate, at the time of reporting, that economic extraction is justified.

“*proven reserves*” under SEC Industry Guide 7 means reserves for which (a) quantity is computed from dimensions revealed in outcrops, trenches, workings or drill holes; grade and/or quality are computed from the results of detailed sampling and (b) the sites for inspection, sampling and measurement are spaced so closely and the geologic character is so well defined that size, shape, depth, and mineral content of reserves are well-established.

“*proven mineral reserves*”, as such term is defined by the Canadian Institute of Mining, Metallurgy and Petroleum in the CIM Definition Standards, is the economically mineable part of a measured mineral resource demonstrated by at least a preliminary feasibility study. This study must include adequate information on mining, processing, metallurgical, economic and other relevant factors that demonstrate, at the time of reporting, that economic extraction is justified.

“*qualified person*” as defined under NI 43-101 means an individual who (a) is an engineer or geoscientist with at least five years of experience in mineral exploration, mine development or operation or mineral project assessment, or any combination of these; (b) has experience relevant to the subject matter of the mineral project and the technical report; and (c) is in good standing with a professional association. Note: a professional association is a self-regulatory organization of engineers, geoscientists or both that, among other criteria, requires compliance with the professional standards of competence and ethics established by the organization and has disciplinary powers over its members.

“*recovery*” means that portion of the metal contained in the ore that is successfully extracted by processing, expressed as a percentage.

“*sampling*” means selecting a fractional, but representative, part of a mineral deposit for analysis.

“*sediment*” means solid material settled from suspension in a liquid.

“*stockwork*” means a rock mass interpenetrated by small veins of mineralization.

“*strike*”, when used as a noun, means the direction, course or bearing of a vein or rock formation measured on a level surface and, when used as a verb, means to take such direction, course or bearing.

“*strike length*” means the longest horizontal dimension of an orebody or zone of mineralization.

“*stripping ratio*” means the ratio of waste to ore in an open pit mine.

“*sulfide*” means a compound of sulfur and some other element.

“*tailings*” means material rejected from a mill after most of the valuable minerals have been extracted.

“*vein*” means a fissure, fault or crack in a rock filled by minerals that have traveled upwards from some deep source.

“*volcaniclastic*” means derived by ejection of volcanic material from a volcanic vent.

“*waste*” means rock lacking sufficient grade and/or other characteristics of ore.

PART I

ITEM 2. PROPERTIES.

NOTE: This Item 2 has been amended to correct an inadvertent error and to clarify and expand disclosure contained in the Company’s Annual Report on Form 10-K as filed with the Securities and Exchange Commission on March 13, 2009. See “Explanatory Note” above. No other information in the Annual Report on Form 10-K as filed on March 13, 2009 is being amended, revised or otherwise altered or expanded.

Detailed information is contained herein with respect to the Paredones Amarillos, Mt. Todd, Awak Mas, Yellow Pine, Long Valley and Guadalupe de los Reyes gold projects. The Corporation holds the Paredones Amarillos and Guadalupe de los Reyes gold projects through its wholly-owned subsidiary, Minera Paredones Amarillos S.A. de C.V.; the Mt. Todd gold project is held through its wholly-owned subsidiary, Vista Gold Australia Pty Ltd., the Awak Mas gold project is held through its indirect wholly-owned subsidiary, PT Masmino Dwi; the Yellow Pine gold project is held through its indirect wholly-owned subsidiary, Idaho Gold Resources LLC.; and the Long Valley gold project is held through its indirect wholly-owned subsidiary Vista Gold California LLC. The Amayapampa gold project and the Corporation’s wholly-owned subsidiary, Minera Nueva Vista S.A., were sold to an Australian company in 2008.

Cautionary Note to U.S. Investors: “Part I–Item 2. Properties” and other sections of this Annual Report on Form 10-K contain the terms “measured mineral resources,” “indicated mineral resources,” “inferred mineral resources,” “proven mineral reserves,” and “probable mineral reserves” as defined in accordance with NI 43-101. Please note the following regarding these terms:

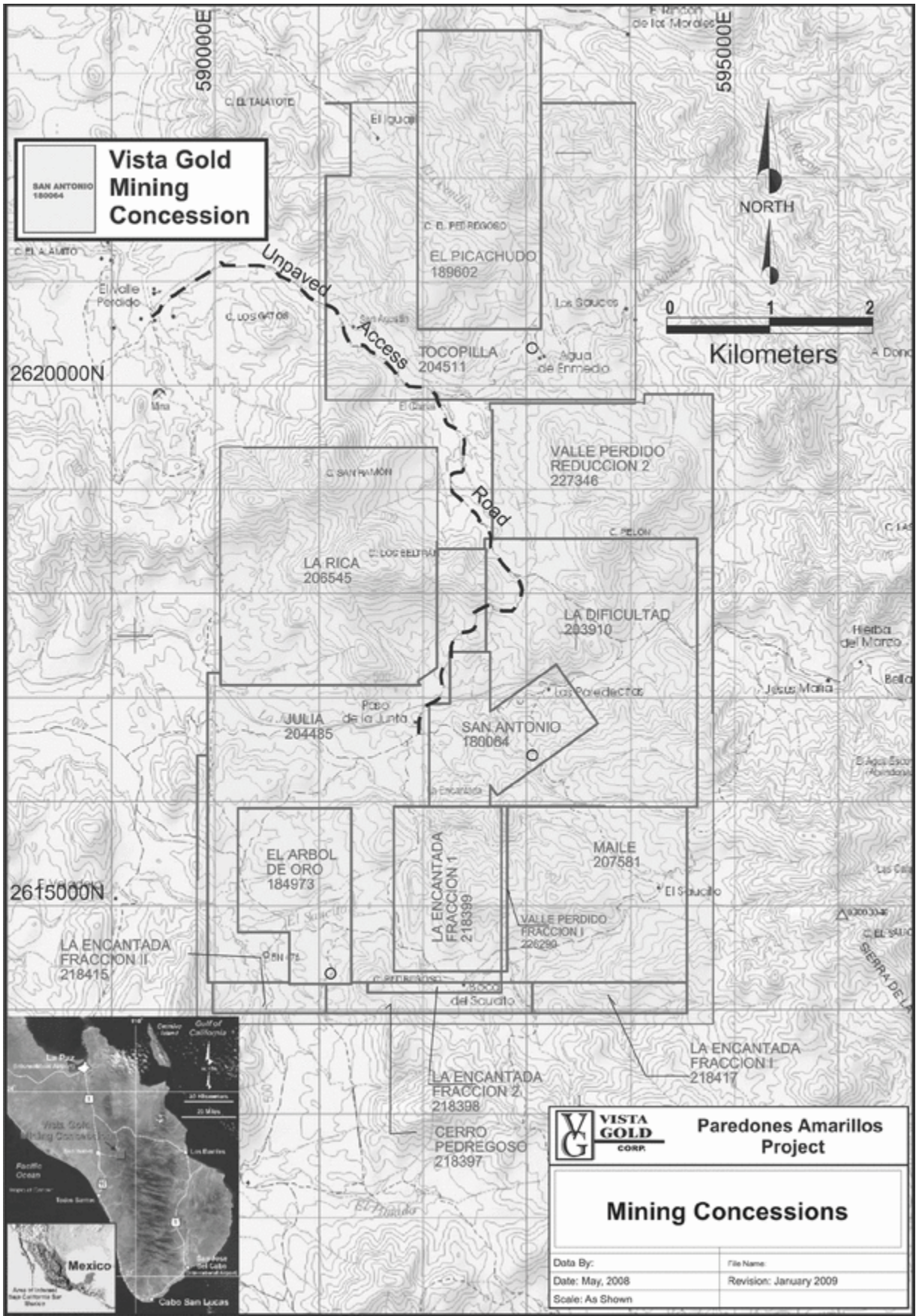
- **“Measured mineral resources” and “indicated mineral resources”**—we advise U.S. investors that while these terms are recognized and required by Canadian regulations, these terms are not defined in SEC Industry Guide 7 and the SEC does not normally permit such terms to be used in reports and registration statements filed with the SEC. **U.S. investors are cautioned not to assume that any part or all of the mineral deposits in these categories will ever be converted into reserves.**

- **“Inferred mineral resources”**—we advise U.S. investors that while this term is recognized by Canadian regulations, the SEC does not recognize it. “Inferred mineral resources” have a great amount of uncertainty as to their existence, and great uncertainty as to their economic and legal feasibility. It cannot be assumed that all or any part of an inferred mineral resource will ever be upgraded to a higher category. Under Canadian rules, estimates of inferred mineral resources may not form the basis of a feasibility study or prefeasibility study, except in rare cases. The SEC normally only permits an issuer to report mineralization that does not constitute “reserves” only as in-place tonnage and grade without reference to unit measures. **U.S. investors are cautioned not to assume that any part or all of an inferred mineral resource exists or is economically or legally minable.**
- **“Proven mineral reserves” and “probable mineral reserves”**—The definitions of proven and probable mineral reserves used in NI 43-101 differ from the definitions for “proven reserves” and “probable reserves” as found in SEC Industry Guide 7. Accordingly, Vista Gold’s disclosure of mineral reserves herein may not be compatible to information from U.S. companies subject to reporting and disclosure requirements of the SEC.

Please see **“Cautionary Note to U.S. Investors regarding Reserve and Resource Estimates”** for further discussion on the differences between terms under NI 43-101 and SEC Industry Guide 7.

Paredones Amarillos

Paredones Amarillos is located 35 miles southeast of the capital city of La Paz, in the Mexican state of Baja California Sur and is accessed by paved and dirt roads. The project area covers about 9,168 acres. A map showing the location of the mining concessions and a table with a list of the mining concessions and the holding requirements follow.



Vista Gold Mining Concession
SAN ANTONIO 180064



VISTA GOLD CORP. Paredones Amarillos Project

Mining Concessions

Data By:	File Name:
Date: May, 2008	Revision: January 2009
Scale: As Shown	

Paredones Amarillos Gold Project Mining Concessions Controlled by Vista Gold

Project is centered at approximately UTM coordinates 592500E, 2618000N (NAD27)

All concessions are located on INEGI official map number F12B23

Concession Name	Serial Number	Surface Area (hectares)	Location Date	Expiration Date	Annual Fees (in Mexican Pesos)
San Antonio	180064	151.3647	3/23/1987	3/22/2037	30,512
El Arbol De Oro	184973	162.0000	12/13/1989	12/12/2039	32,656
El Picachudo	189602	348.0000	12/5/1990	12/4/2040	70,150
La Dificultad	203910	454.0218	11/5/1996	11/4/2046	91,522
Julia	204485	469.4073	2/21/1997	2/20/2047	94,624
Tocopilla	204511	582.4949	2/28/1997	2/27/2047	117,420
La Rica	206545	481.1593	1/23/1998	1/22/2048	96,992
Maile	207581	296.9883	6/30/1998	6/29/2048	59,866
Cerro Pedregoso	218397	46.6493	11/5/2002	11/4/2052	1,328
La Encantada Fracc. 2	218398	12.9992	11/5/2002	11/4/2052	370
La Encantada Fracc. 1	218399	166.2248	11/5/2002	11/4/2052	4,734
La Encantada Fracc. II	218415	32.4883	11/5/2002	11/4/2052	926
La Encantada Fracc. I	218417	44.9991	11/5/2002	11/4/2052	1,282
Valle Perdido Fracc. I	226290	9.7752	12/6/2005	12/5/2055	134
Valle Perdido Reduccion 2	227346	451.5862	6/9/2006	11/4/2052	6,214
Totals		3,710.1584 hectares			608,730
15 Concessions		9,168 acres	Total in US\$@ an exchange rate on 2/23/09 of = US\$1.00 = MP \$13.92		US\$41,229

Note: Proof of Labor must be filed on all concessions annually. All concessions are Federal Mining Concessions.

We acquired 100% of the project on August 29, 2002, from Viceroy Resource Corporation (“Viceroy”). To acquire the project, we paid cash of CDN \$1.0 million and issued 303,030 equity units comprised of one Common Share and one purchase warrant to purchase one Common Share to Viceroy, and on August 29, 2003, we paid Viceroy the remaining CDN \$0.5 million due pursuant to the acquisition contract (see also Consolidated Financial Statements–Note 6).

History

Mining in the region dates back to the colonial times, when gold was discovered by Jesuits who were colonizing the area. When the gold rush of 1849 began in California, it served to reignite interest in dormant mines. The mining town of El Triunfo is reported to have had a population of 14,000 at its peak. Between 1881 and 1895 the Progreso Mining Company recovered 75,000 ounces of gold and 15,000,000 ounces of silver from processing 400,000 tons of material mined in the mines near El Triunfo. In 1895 about 1000 people were working underground with 350 mules in the mines. In 1895 the mines flooded from the failure of a natural dam at a lake during a hurricane. The mines only worked intermittently after flooding.

The initial recorded work on the Paredones Amarillos gold project commenced around 1970 when Noranda (Cia Minera Gamma) acquired a number of Baja Sur properties in 1970. Noranda joint ventured the property with Minera Las Cuevas. A total of 28 diamond drill holes were completed in the first round of drilling on the property.

An extensive geochemical program and completion of 18 diamond drill holes was carried out by Minera Paredones Amarillos S. A. (Imperial Metals Corporation) who acquired the property.

The Paredones Amarillos gold project has been a significant exploration target since the 1980s. In 1992 Tymar Resources acquired 70% of the shares of Minera Paredones Amarillos S. A. (MPA). Tymar then changed its name to Baja Gold Inc. (Baja). Baja's first program included extending the geochemical survey and 18 reverse circulation drill holes.

In 1997, Echo Bay Mines Ltd. ("EBM") completed a final feasibility study for an open pit mine on the project. As a result of the subsequent decline in gold prices, start-up was postponed. EBM holds a 2% net profits interest on certain concessions of the project, subject to a cap of \$2 million. Additionally, Minera Tepmin, S.A. de C.V., holds a 1% net smelter returns royalty on two concessions.

The project holds environmental authorizations for the purpose of the following: project development including access road, power line, telephone communications, and infrastructure to supply water; construction and operation of a tailings dam; disposal of tailings; construction of a mill; and installation of three pumping stations.

Infrastructure and Access

The project site is currently accessible by government-maintained dirt roads from the north and the west. The project site is currently accessible on existing public roads: paved highway to within 11 miles of the project on the north then by government-maintained dirt roads from the north. There is also a government maintained dirt road from the west. The main access will be from the north. We plan to widen and improve approximately six miles of existing roads from the north and to construct approximately five miles of new road immediately north of the project. At the present time, the project area is undeveloped with only several sheds used for drill sample storage and the drill access roads constructed during the exploration phase. We maintain an office in the city of La Paz.

Employees will be transported between the site and the local communities using company supplied buses or vans.

Climate

The topography at the project site comprises moderate to steep hills, with elevations ranging from 400 m to 800 m. Overall, the drainage system is characterized by moderately steep v-shaped valleys.

The climate is considered dry and semi-arid, with rain during summer, less than 5% precipitation during winter. Most of the precipitation occurs during the summer months. Winter precipitation contributes between 5% and 10% of the annual average rainfall of 37 cm. In general, evaporation greatly exceeds precipitation, although there are recorded exceptions. Temperatures range from a winter low of 48 degrees Fahrenheit to a summer high of 95 degrees Fahrenheit, with an annual average of 70.5 degrees Fahrenheit.

Year-round operations will be possible in this area.

Local Resources and Infrastructure

La Paz, the state capital, had a population of 220,000 in 2005. The small historic mining towns of El Triunfo and San Antonio have populations of several hundred. The city of La Paz has port facilities.

A combined process warehouse and security office will be constructed northeast of the reagent mixing area and administrative office. We plan to construct a tailing storage facility that will have the capacity to contain 40 Mt of paste tailings. Construction of the tailings embankment will be completed primarily with waste rock derived from mine pre-stripping and waste rock removal operations. A zoned rock fill embankment is proposed with an inner core of compacted waste rock placed with controlled lift thickness, and an outer truck-dumped shell of uncompacted waste rock placed in 5 to 10m lifts.

Location alternatives for tailings disposal and waste rock dump facilities at Paredones Amarillos are limited. The position and extent of the tailings impoundment will be constrained by local topography to the south, the process facilities to the east and Arroyo La Junta to the

north. There is limited potential to extend the impoundment westward; however, a preliminary review of a westward extension of the impoundment footprint does not indicate a significant improvement in storage capacity relative to embankment construction requirements. The location of the tailings impoundment has previously been evaluated by Mexican authorities. Advancing the project with the proposed tailings location will facilitate ongoing review and permit acquisition. The site is relatively rugged with the surface topography influenced by outcrops of resistant granitic bedrock. Local elevation ranges from approximately 400 to 800m. The tailings impoundment will lie between the elevations of approximately 419 and 522m. Gently sloping areas are rare in the vicinity of the proposed mining operation, and a combination of grading and waste rock fill placement will be required to develop a foundation suitable for installation of an impoundment lining system.

High-voltage electrical power will be available from an existing sub-station located approximately 11 miles north of the project area. We intend to construct a new power line from the sub-station to the project. The power line design has been completed and the right-of-way agreements are in place. We intend to use desalinated sea water from the Pacific Coast which is about 16 miles to the west. The length of the pipeline to transport desalinated sea water to the project is dependent on the ultimate route chosen; however 28 miles was used in the 2008 feasibility study. Annual water consumption is estimated to be 370 million gallons.

Geology and Mineralization

The Paredones Amarillos gold project lies on the northwest flank of the Sierra de Laguna within the La Paz crystalline complex, which forms the southern tip of the Baja California peninsula. The crystalline complex comprises intermediate to silicic Cretaceous igneous rocks that intruded and metamorphosed early Mesozoic clastic and calcareous sedimentary rocks. The crystalline complex is bounded on the west by the La Paz fault that transects the peninsula. A thick sequence of Tertiary volcanic and volcanoclastic rocks crops out west of the La Paz fault. Erosion has removed the meta-sediments and Tertiary volcanic rocks from the Paredones Amarillos gold project area.

General geology consists of diorite roof pendants intruded by a granodiorite batholith with local low and high-angle fault zones. A north-east striking, south-east dipping low-angle silicified fault zone (“cataclasite”) is the main host of gold mineralization at Paredones Amarillos. Movement along this structure has been characterized as reverse, resulting from compression. Secondary, high-angle faulting is thought to control the higher-grade mineralization at the project.

Gold grade at Paredones Amarillos generally varies directly with the abundance of sulfides. The important sulfides are pyrite, arsenopyrite, pyrrhotite, and minor marcasite and chalcopyrite. These sulfides may be accompanied by traces of sphalerite, galena, bismuthinite, native bismuth and sulphosalts. The better gold grades occur with a combined 2 to 7 percent pyrite-arsenopyrite-pyrrhotite-chalcopyrite which serves as a megascopic guide to gold mineralization. However, not all high-sulfide rock carries high gold values.

Main stage gold mineralization lies almost entirely within the cataclasite unit. Second stage gold occurs within hanging wall diorite that is not associated with cataclasite. This mineralization occurs in quartz-sulfide microveinlets associated with high angle brittle fracture zones and minor faults up to a few meters in width that cut the ore body and wall rocks. Given the impermeable nature of the cataclasite, these structural intersections are not believed to produce high grade pods of gold mineralization.

The known gold mineralized material occupies an inverted U-shaped block with an approximate strike length of 4,900 feet east-west, a width of approximately 1,600 feet north-south, and a thickness of approximately 100 feet. The apex of the “U” is near the center of the proposed pit with the legs forming the east and west pit lobes.

Definitive Feasibility Study

In August 2007, we announced the start of a definitive feasibility study which was completed in early September 2008 under the direction of our independent consultant, SRK Consulting (US), Inc. (“SRK”) of Lakewood, Colorado. The study is titled “Feasibility Study, NI 43-101 Technical Report, Vista Gold Corp., Paredones Amarillos Gold Project, Baja California Sur, Mexico”. The final report is dated October 20, 2008, and is available on SEDAR. The technical portions of the study contracted directly by Vista Gold and supervised by SRK were completed by Mine Development Associates (resource/reserve estimates, mine planning and mining capital/operating cost estimates), Resource Development, Inc. (metallurgical testing and review), Golder Associates Inc. (tailings impoundment facility design/construction cost

estimates), and SRK (pit slope stability evaluation, closure plan/cost estimates and economic analysis). Dr. Neal Rigby, CENG, MIMMM, PhD, Principal of SRK, an independent Qualified Person as defined by Canadian National Instrument 43-101 (“NI 43-101”), prepared or supervised the preparation of material on behalf of SRK. Steven Ristorcelli, P. Geo. and Thomas Dyer, P. Eng., both of Mine Development Associates, independent Qualified Persons as defined by NI 43-101, prepared or supervised the preparation of material on behalf of Mine Development Associates.

A new mineral resource estimate (mineralized material estimate under SEC Industry Guide 7) was completed, dated September 5, 2008, by Mine Development Associates under the direction of Mr. Steven Ristorcelli, P. Geo., an independent Qualified Person as defined by NI 43-101, and is part of the feasibility study. The estimate was prepared using industry standard software and estimation methodologies. Of the 438 holes in the data base, 387 holes containing 51,622 samples were used in the resource estimate. Mr. Ristorcelli reviewed available information necessary for the preparation of the resource estimate, including sampling, analytical, drilling and geologic. Following a review of the available documentation pertaining to the sampling programs, the data was deemed sufficiently accurate to use for estimation. However, Mr. Ristorcelli noted that some of the early program’s quality assurance and quality control procedures were poorly documented and that an apparent bias may exist between some of the assay values and the check assay values of the same samples. As the original samples were not preserved and cannot be re-assayed, Mr. Ristorcelli has recommended a 12 to 15 hole drill program to confirm the validity of the model that relied on those assays whose check assay bias is unresolved. Mr. Ristorcelli undertook multiple checks to assess the validity of the model and classified the mineral resources into measured, indicated and inferred categories to be in compliance with the NI 43-101 requirement of following “CIM Standards on Mineral Resources and Reserves, Definitions and Guidelines,” issued in 2000 and modified with adoption of

the “CIM Definition Standards–For Mineral Resources and Mineral Reserves” in 2005. Under SEC Industry Guide 7 guidelines, mineralized material at a cut-off grade of 0.012 gold ounces per ton totals 77,829,000 tons grading 0.027 gold ounces per ton.

Under NI 43-101, using a cutoff grade of 0.012 gold ounces per ton, measured mineral resources are estimated at 10,351,000 tons grading 0.032 gold ounces per ton, indicated mineral resources are estimated at 67,479,000 tons grading 0.026 gold ounces per ton and inferred mineral resources are estimated at 8,481,000 tons grading 0.019 gold ounces per ton. **Cautionary Note to U.S. Investors: Mineral resources are not mineral reserves and there is no assurance that any mineral resources will ultimately be reclassified as proven or probable reserves. Mineral resources which are not mineral reserves do not have demonstrated economic viability. U.S. Investors should read the “Cautionary Note to U.S. Investors Regarding Reserve and Resource Estimates” above concerning the difference between “resources” and “reserves”.**

Silver occurs in the deposit, but due to the lack of quality assurance and quality control data for the silver assays, a NI 43-101 compliant resource estimate has not been prepared. Metallurgical testing indicates that silver recoveries are variable, but silver production is not included in the study. It cannot be assumed that any silver will be produced from the project.

The metallurgical recovery is estimated to be 91.5% for gold. The mineral reserve estimates prepared and reported by Mine Development Associates, under the supervision of Mr. Dyer, at a gold price of \$700 per ounce of gold and cut-off grade of 0.012 gold ounces per ton are summarized in the following table.

Reserves Estimated at Paredones Amarillos

Reserve Classification	Short Tons (x1000)	Average Gold Grade (ounces/ton)
Proven(1)	7,878	0.034
Probable(1)	33,952	0.031
Proven & Probable(1)	41,830	0.031

(1) **Cautionary Note to U.S. Investors** concerning estimates of proven and probable reserves: The estimates of mineral reserves shown in this table have been prepared in accordance with NI 43-101. The definitions of proven and probable reserves used in

NI 43-101 differ from the definitions in SEC Industry Guide 7. Accordingly, Vista Gold's disclosure of mineral reserves herein may not be comparable to information from U.S. companies subject to the reporting and disclosure requirements of the SEC. U.S. Investors should read the "**Cautionary Note to U.S. Investors Regarding Reserve and Resource Estimates**" above.

As of January 1, 2009, the rolling three-year average gold price was \$723.60, which is slightly higher than the \$700 gold price used by Mine Development Associates for the mineral reserves reported in the table above. Therefore, under SEC Industry Guide 7 requirements, we feel the mineral reserves listed above are conservative.

However, should we not be able to obtain the required governmental permits to mine the property, then the project would not have mineral reserves under SEC Industry Guide 7.

The proposed pit is oriented approximately east-west and would have two distinct lobes. We plan to extract ore from the mine using conventional open pit mining equipment and techniques. A 100-ton truck and loader fleet has been selected and we would be the owner and operator of the fleet. The higher-grade west lobe would be mined first and a significant portion of the waste rock from the east lobe would be used to backfill the west lobe of the pit. Concurrent reclamation of two waste dumps would be completed during the latter years of the operation.

Estimated life-of-mine average cash production costs are projected to be \$419 per ounce, with lower costs of \$388 per ounce projected during the first five years of production. Operating costs used diesel prices effective as of May 2008 and energy prices effective as of the first quarter 2008. Pre-production capital costs, including contingency, owner's costs and working capital, are estimated to be \$196.7 million or \$165 per ounce of gold produced. Total capital costs including replacement and reclamation over the life of the project are estimated to be \$191 per ounce of gold produced.

We intend to process the ore in a conventional crushing and grinding circuit consisting of a primary gyratory crusher followed by a semi-autogenous grinding mill and two ball mills with an expected mill ore throughput rate of approximately 11,000 tons per day. The crushing and grinding equipment was acquired from the Colomac Mine and is presently in Edmonton, Canada, waiting shipment to Arizona for repairs and reconditioning. The cost of this equipment was approximately \$16 million, with funds provided from our private placement of the Notes, completed in March 2008, for

aggregate proceeds of approximately \$30 million. The proposed flow sheet indicates that following grinding, the slurried ore will be sized by cyclones and then leached in tanks prior to gold recovery using a Kemix carbon-in-pulp circuit. Gold will be stripped from the carbon and precipitated in an electrowinning cell prior to refining into doré bars. The tailings will be detoxified using ferrous sulfate, paste thickened and deposited in a lined tailings impoundment facility on-site.

Due to the scarcity of surface water and political sensitivities regarding the use of groundwater, we have elected to construct and operate a desalination plant on the Pacific Coast. Water would be pumped approximately 28 miles to the site. Annual water consumption is estimated to be approximately 370 million gallons.

We expect that energy for the project will be supplied by the Comisión Federal de Electricidad from an existing sub-station located approximately 11 miles north of the project.

It is anticipated that diesel fuel for the project will be provided in bulk quantities by Petroleos de Mexico. Fuel prices in Mexico are subsidized and have not experienced the volatility seen in other locations.

The project is remotely located and is not expected to directly affect any local inhabitants. Our planned access road improvements will benefit the villages of Valle Perdido and El Rosario. We are currently working with the local education and health care authorities and have become a "social partner" with the elementary school in El Rosario. We are unaware of any social issues related to the development of the project.

The base-case economic analysis used a gold price profile with a gold price of \$850 per ounce in the first three years of production, decreasing to \$725 per ounce for the remainder. Alternative sensitivity analyses were completed at gold prices of \$700, \$800 and \$900 per ounce. The economic analyses were conducted on 100% equity basis with no consideration of debt or leasing. Estimated before and after-tax economic results, showing the internal rate of return (IRR) and net present value at a 5% discount rate (“NPV₅”), cumulative cash flow and sensitivity of the base case to changes in gold prices are presented in the following tables.

Before Tax Economic Results

Gold Price Scenario	Before Tax	Before Tax	Before Tax
	IRR (%)	NPV ₅ (\$ 000' s)	Cumulative Cash Flow (\$ 000' s)
Base Case Gold Price Profile	21.0%	\$ 128,890	\$ 217,890
Fixed \$700 Gold Price	12.2%	\$ 59,888	\$ 132,509
Fixed \$800 Gold Price	21.4%	\$ 149,033	\$ 232,745
Fixed \$900 Gold Price	29.7%	\$ 238,179	\$ 372,980

After Tax Economic Results

Gold Price Scenario	After Tax	After Tax	After Tax
	IRR (%)	NPV ₅ (\$ 000' s)	Cumulative Cash Flow (\$ 000' s)
Base Case Gold Price Profile	16.6%	\$ 82,902	\$ 152,500
Fixed \$700 Gold Price	9.3%	\$ 32,010	\$ 90,862
Fixed \$800 Gold Price	17.1%	\$ 97,272	\$ 177,818
Fixed \$900 Gold Price	24.2%	\$ 162,030	\$ 264,497

Schedule

We plan to utilize outside sources to provide the additional project capital and are proceeding to examine various project financing alternatives, including debt and equity components. We expect to complete financing arrangements and begin construction as soon as the remaining permits are in hand. As noted below, we have already purchased the major mill equipment with funds raised in our March 2008 private placement of the Notes.

Equipment Purchase

On January 7, 2008, we entered into a formal agreement with A.M. King Industries, Inc. (“A.M. King”) and Del Norte Company Ltd., a wholly owned subsidiary of A.M. King, to purchase gold processing equipment to be used at the Paredones Amarillos gold project. The aggregate purchase price was approximately \$16.0 million, of which approximately

\$8.0 million was paid on signing of the asset sale agreement (see Exhibit 10.36 hereto). The remaining \$8.0 million was paid in February and March 2008. The purchase price included the cost of relocating the equipment to Edmonton, Alberta, Canada. From this point, we will arrange for reconditioning and transportation of the equipment to the project site. The equipment includes a 11,000 ton per day semi-autogenous (SAG) grinding mill, two ball mills, gyratory crusher and a shorthead cone crusher, along with other related components, spare parts and other process plant equipment.

On December 5, 2008, we completed a transaction to purchase the land needed for a desalination plant for the Paredones Amarillos gold project. The land is located on the Pacific Coast, approximately 16 miles southwest of the project. The four-acre parcel of land is zoned for industrial use and the Change of Land Use Permit has been received from the Municipality of La Paz for the installation of the desalination plant. On December 23, 2008, we entered into an agreement to purchase approximately 1,236 acres of land at Paredones Amarillos for the mill site and other infrastructure.

Permitting Status

The Paredones Amarillos gold project is located in a special use area within the buffer zone of the Sierra Laguna Biosphere Reserve. The special use area is located adjacent to the northern limit of the buffer zone and has unimpeded access from the north. As previously reported, earlier in 2008 we announced that we received correspondence from the local La Paz office of the SEMARNAT which indicated that staff in that office are of the opinion that the CUSF approved by SEMARNAT in 1997 in relation to the Paredones Amarillos gold project is no longer valid. This permit is necessary for the development of the project to proceed. Our Mexican advisors and counsel in Mexico have advised us that they believe that the permit remains valid. However, our legal counsel advised us that a new Change of Land Use Permit application would be the most expeditious way to obtain the necessary approvals.

Throughout 2008, we have been involved in a steady dialogue with government officials in Baja California Sur and in Mexico City. On August 6, 2008, we filed a request for a TOP for the use of the federal ground in the project area for the life of the project. As announced in press releases dated September 8 and July 2, 2008, we indicated that we had decided to apply for a CUSF. In a November 10, 2008, press release, we indicated we were in final negotiations to purchase the land required for the process plant and tailings impoundment facility and had presented an application for a TOP for the use of the Federal land which overlies the deposit. The land purchase and TOP are necessary pre-requisites for the CUSF application. On December 23, 2008, we reached agreement to purchase approximately 1,236 acres of land for the mill site and other infrastructure. By the end of 2008, we had not received the TOP. Communications that our advisors have had with the office of the General Director of Mines in the Ministry of Economy (the department responsible for awarding the TOP) indicate that the approval process is proceeding normally, but at a slower pace than expected. We have the necessary environmental permit and completed the other prerequisite studies for the submittal of the CUSF permit application and plan to file that permit application as soon as the TOP is received. Additional information is contained in our press releases dated April 30, May 8, May 21, July 2, September 8 and November 10, 2008 and January 12, 2009.

There are no known existing environmental liabilities to which the Paredones Amarillos gold project is subject.

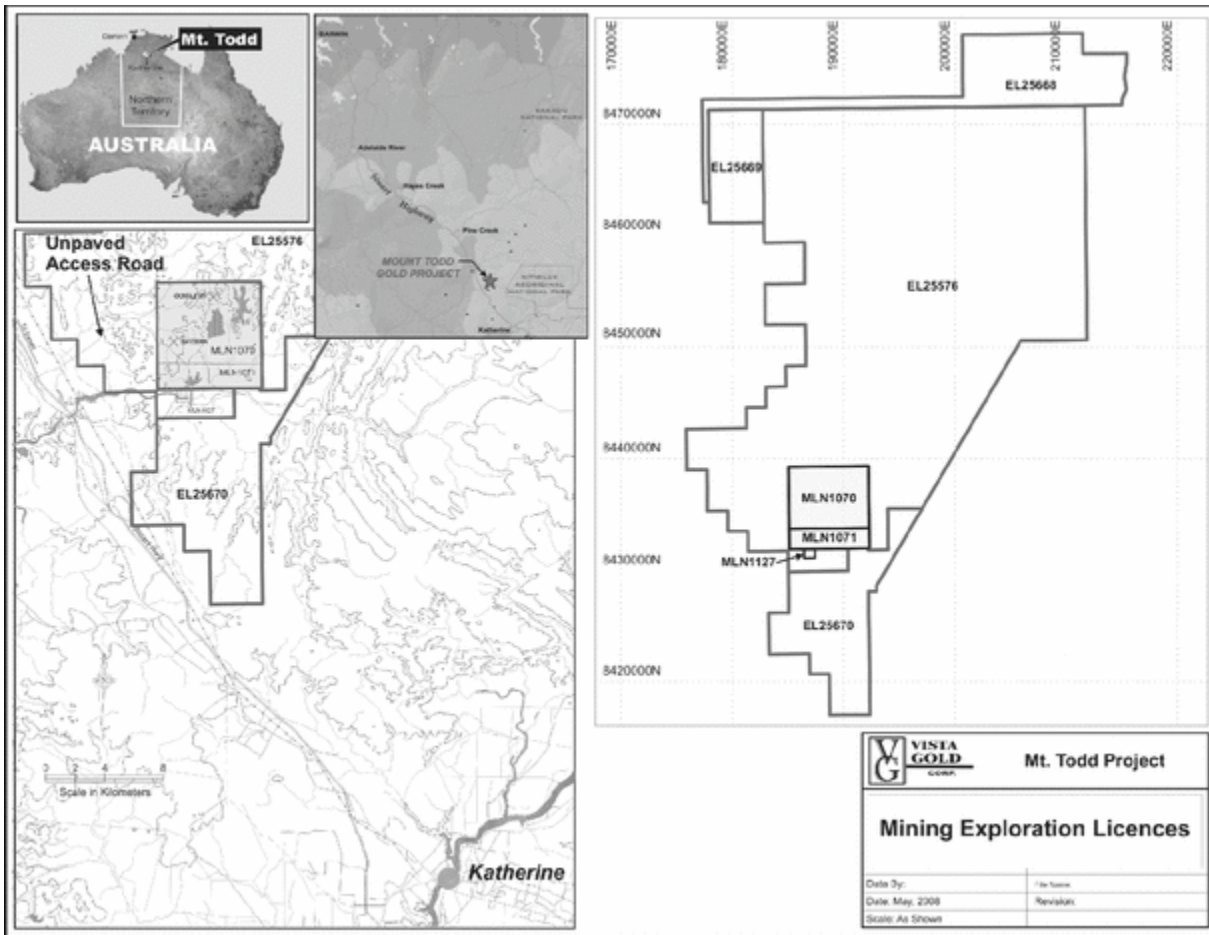
Mt. Todd

Effective March 1, 2006, we and our subsidiary Vista Gold Australia Pty Ltd. (“Vista Australia”) entered into agreements with Ferrier Hodgson, the Deed Administrators for Pegasus Gold Australia Pty Ltd. (“Pegasus”), the government of the Northern Territory of Australia and the Jawoyn Association Aboriginal Corporation (“JAAC”) and other parties named therein, subject to regulatory approvals, to purchase a 100% interest in the Mt. Todd gold mine (also known as the Yimuyn Manjerr gold mine) in the Northern Territory, Australia. Under these agreements, we are guarantor of the obligations of our subsidiary Vista Australia.

As part of the agreements, we agreed to pay Pegasus, AU\$1.0 million (\$739,600) and receive a transfer of the mineral leases and certain mine assets; and pay the Northern Territory’s costs of management and operation of the Mt. Todd site up to a maximum of approximately AU\$375,000 (approximately \$277,500) during the first year of the term (initial term is five years, subject to extensions), and assume site management and pay management and operation costs in following years. Additionally, we agreed to issue Common Shares with a value of CDN\$1.0 million (amounting to 177,053 Common Shares) to the JAAC as consideration for the JAAC entering into the agreement and for rent for the use of the surface overlying the mineral leases until a decision is reached to begin production. Other agreement terms provide that we will undertake a technical and economic review of the mine and possibly form one or more joint ventures with the JAAC. In June 2006, the transactions contemplated under the agreements were completed and effective, with funds held in escrow

released to the ultimate vendors and the Common Shares issued to the JAAC.

In August and September 2007, we obtained several new exploration licenses, located generally to the north of and contiguous to the Mt. Todd mining licenses. Total land holdings controlled by Vista Australia are approximately 397,538 acres. A map showing the location of the mining and exploration licenses and a table with a list of the mining and exploration licenses and the holding requirements follow.



Mt. Todd Land Holdings of Vista Gold

License Name	Serial Number	Federal Claim Type	Surface Area (hectares)	Location Description (UTM)	Location Date	Expiration Date	Estimated Holding Requirements		Annual Reports Due
							Annual Rent including GST (Australian Dollars)	Annual Work Requirement (Australian Dollars)	
Mining Licences:									
MLN 1070	MLN 1070	Mining License	3,982	Mining License Block	March 5, 1993	March 4, 2018	\$43,802 (due March 4)	N/A	June 4
MLN 1071	MLN 1071	Mining License	1,327	centered at approximately	March 5, 1993	March 4, 2018	\$14,597 (due March 4)	N/A	June 4
MLN 1127	MLN 1127	Mining License	80	188555E, 435665N	March 5, 1993	March 4, 2018	\$880 (due March 4)	N/A	June 4

Subtotals			5,389				A\$59,279	A\$0	
Exploration Licenses:									
EL 25576	EL	Exploration	58,194	Centered at	March 15,	March 14,	\$3,366	\$100,000	April 14
	25576	License		approximately	2007	2013	(due March 14)		
				192557E, 8446405N					
EL 25668	EL	Exploration	7,288	Centered at	March 17,	March 16,	\$561	20,000	September 16
	25668	License		approximately	2007	2013	(due August 16)		
				199000E, 8463964N					
EL 25669	EL	Exploration	3,177	Centered at	March 15,	March 14,	\$198	10,000	April 14
	25669	License		approximately	2007	2013	(due March 14)		
				178272E, 8457220N					
EL 25670	EL	Exploration	6,391	Centered at	March 15,	March 15,	\$374	15,000	April 14
	25670	License		approximately	2007	2013	(due March 14)		
				185445E, 8424349N					
Subtotals			75,050				A\$4,499	A\$145,000	
Totals AS							Total =	Total =	
							A\$63,778	A\$145,000	
Totals US\$							Total in US\$@	Total in US\$@	
							an exchange rate	an exchange	
							on 2/23/09 of	rate on 2/23/09	
							US\$1.00 =	of US\$1.00 =	
							A\$1.55 =	A\$1.55 =	
							US\$41,167	US\$93,593	
Grand Totals		3 Mining	160,878					US\$134,760	
		Licenses,	hectares						
		4 Exploration	=						
		Licenses	397,538.2 acres						

The Mt. Todd mine site is subject to several environmental liabilities resulting from previous operations, including acid rock drainage from the waste dump and general mine closure liabilities. Under the terms of our agreement with the Northern Territory Government, Vista has no environmental liability for the site until such time as we decide to develop a new mining operation at Mt. Todd and are awarded the permits which will include a comprehensive closure plan for the site.

Access

The Mt Todd project is located approximately 30 miles northwest of Katherine, and approximately 155 miles southeast of Darwin in the Northern Territory of Australia. The project is accessible from Katherine by existing paved public roads and approximately two and a half miles of paved private road. We control and maintain the private paved road.

Climate

The Mt Todd area has a sub-tropical climate with a distinct wet season and dry season. The area receives most of its rainfall between the months of January and early March. The temperature usually ranges from 77 degrees to 95 degrees Fahrenheit. Between November and December, temperatures can reach 104 degrees Fahrenheit. Winter temperatures in the dry season are warm in the daytime, but can drop to 50 degrees Fahrenheit at night.

Year-round operations will be possible in the area.

Access to local resources and infrastructure is excellent. The Mt Todd Project is located sufficiently close to the city of Katherine to allow for an easy commute for workers. Because the area has both historic and current mining activity, the area contains a skilled mining workforce. In addition, Katherine offers all of the necessary support functions that are found in a medium-sized city with regard to supplies, hotels and communications.

Mt. Todd was an operating mine in the late 1990s. Although most of the processing equipment and facilities were removed from the site, basic infrastructure items are still in place, including: access control point, small shop and office, mill building, and various concrete slabs and floors. The Batman Pit is partially filled with water that has been pumped from the containment pond downstream of the waste dumps. We will have to dewater the pit and treat the water for discharge prior to the start of operations. The Mt. Todd site was not reclaimed when the mine closed and as a result, the dumps and heap leach pad require ongoing care and maintenance. Vista Australia provides that care and maintenance, but is not responsible for the environmental liability resulting from previous operations until we take the decision to re-open the mine and have received the appropriate permits. We began installing a water treatment plant in late 2008 and plan to complete the installation late in the first quarter of 2009. The treated water will initially be stored in the existing tailings impoundment facility, but we expect to receive the authorization to allow continual discharge as necessary. The cost of this treatment system is estimated at approximately \$430,000, of which approximately \$270,000 was spent in 2008, leaving approximately \$160,000 that Vista Gold plans on expending in 2009.

A medium voltage power line supplies the site with electrical power. The Mt. Todd gold project generated its own power using natural gas. The natural gas pipeline is still in place. The project has its own fresh water reservoir which is expected to supply all of the project's water needs.

Geology and Mineralization

The Mt. Todd gold project is located approximately 30 miles northwest of Katherine, Northern Territory, Australia. The Mt. Todd gold project is situated within the southeastern portion of the Early Proterozoic Pine Creek Geosyncline. The Batman deposit geology consists of a sequence of hornfelsed interbedded greywackes and shales with minor thin beds of felsic tuff. Bedding consistently strikes at 325°, dipping 40° to 60° to the southwest. Northerly trending sheeted quartz sulfide veins and joints striking at 0° to 20° and dipping 60° to the east are the major controls for mineralization in the Batman deposit. The veins are 0.04 to 4 inches in thickness with an average thickness of around 0.4 inches and occur in sheets with up to six veins per horizontal foot. These sheeted veins are the main source of gold mineralization in the Batman deposit. In general, the Batman deposit is 4,800 to 5,100 feet in length by 1,200 to 1,500 feet in true width and 1,500 to 1,800 feet in known down-dip extension (the deposit is open along strike and at depth).

Based on a review of project files, our management believes that approximately 27.1 million short tons grading 0.031 gold ounces per ton and containing 826,000 ounces of gold were extracted between 1996 and the termination of mining in 2000. Processing was by a combination of heap-leach production from oxide ore and cyanidation of sulfide ore. The remaining mineralization consists of sulfide mineralization lying below and along strike of the existing open pit.

A third-party NI 43-101 technical study was completed for Vista Gold on the Batman deposit on June 26, 2006, by Gustavson Associates, LLC ("Gustavson") of Boulder, Colorado, under the direction of Mr. John Rozelle, an independent Qualified Person, utilizing standard industry software and resource estimation methodology. The study is titled "Report NI 43-101 Technical Report On The Mt. Todd Gold Project, Northern Territory (*sic*), Australia" and is dated June 26, 2006. It is available on SEDAR. The report includes the results of 91,225 assay intervals from 730 drill holes (225 core, 435 reserve circulation and 70 rotary drill holes) done by BHP Resources Pty Ltd., Zapopan NL and Pegasus with assaying by Australia Assay Laboratories in Pine Creek and Alice Springs, Classic Comlabs in Darwin and Pegasus' onsite lab. Pegasus mined part of the Batman deposit from 1993 to 1997, and a joint venture comprising Multiplex Resources Pty Ltd. and General Gold Resources Ltd. mined the deposit from 1999 to 2000.

The deposit has a drill hole spacing that varies from 80 feet by 80 feet to 260-330 feet by 260-330 feet and generally averages 160 feet by 160 feet. All assaying was fire assay on 50-gram charges. It is the opinion of Gustavson that quality control and quality assurance methods employed by the various companies working at Mt. Todd were standard at the time of the work, and the work including quality control and quality assurance methods has been audited several times by independent consultants.

Based on the report, under SEC Industry Guide 7 guidelines, mineralized material for the Batman deposit, above a cut-off grade of 0.015 gold ounces per ton, was estimated to be 62,146,000 tons at a grade of 0.028 gold ounces per ton.

At the same cut-off grade, under the Canadian Institute of Mining, Metallurgy and Petroleum in the CIM Definition Standards, measured resources are 20,306,000 tons grading 0.028 gold ounces per ton, indicated resources are 41,840,000 tons grading 0.028 gold ounces per ton and inferred resources are 55,174,000 tons grading 0.027 gold ounces per ton. **Cautionary Note to U.S. Investors: Mineral resources are not mineral reserves and there is no assurance that any mineral resources will ultimately be reclassified as proven or probable reserves. Mineral resources which are not mineral reserves do not have demonstrated economic viability. U.S. Investors should read the “Cautionary Note to U.S. Investors Regarding Reserve and Resource Estimates” above concerning the difference between “resources” and “reserves”.**

An NI 43-101 preliminary assessment was prepared for Vista Gold, by Gustavson under the direction of John W. Rozelle, P.G., an independent Qualified Person. The study is titled “Preliminary Economic Assessment, Mt. Todd Gold Project, Northern Territory, Australia” and is dated December 29, 2006. It was posted on SEDAR on January 4, 2007. In undertaking the preliminary assessment, Gustavson considered the economic and technical parameters associated with development of the mineralized material by open-pit mining. The study included a conceptual process flowsheet developed by Resource Development Inc. of Wheat Ridge, Colorado, which is based on preliminary testwork and includes a flotation circuit to recover a bulk sulfide concentrate, and further flotation to separate a copper sulfide concentrate that would contain about one-half of the gold and which would be shipped to a smelter. A pyrite concentrate containing about one-half of the gold would also be produced and this concentrate would be cyanide leached to recover the gold. The cyanide in the sulfide residue would be neutralized, following which the residue would be filtered to dry it, and then placed on a lined pad. MWH Australia Pty Ltd (“MWH”) designed conceptual tailing disposal facilities, including utilizing the existing tailing facility, and estimated capital costs for these facilities. MWH also completed a closure study and cost estimate for closing the mine and facilities following resumption of production.

In the preliminary assessment, Gustavson assumed a 33,000 ton-per-day (11.7 million tons-per-year) ore production rate, resulting in a ten-year operating life. Overall gold recovery was estimated at 87% and copper recovery at 70%.

The cost estimates used in the preparation of a preliminary assessment are generally accepted as being within plus or minus 35-40% of what might be incurred in actual construction and operations. The costs in the Mt. Todd preliminary assessment are within this level of confidence. Startup capital is estimated by Gustavson at \$264 million. Mining costs are estimated at \$1.21 per tonne (\$1.10 per ton) of material mined, processing costs are estimated at \$6.48 per tonne (\$5.88 per ton) of ore processed and general and administrative costs are estimated at \$0.14 per tonne (\$0.13 per ton) processed. Based on these preliminary numbers, a review of the project economics indicates that the project continues to look favorable. However, the study is based on mineralized material (mineral resources under Canadian guidelines) and not mineral reserves. Mineralized material (mineral resources under Canadian guidelines) that are not mineral reserves do not have demonstrated economic viability. A determination of mineral reserves is necessary to demonstrate economic viability of the Batman Deposit.

Additionally, in 2006, we applied for exploration rights to tenements totaling about 273,380 acres adjoining the mining tenements, which were granted in 2007, at which time we began to compile data from previous exploration companies in order to assess the exploration potential.

An infill core drilling program consisting of 25 holes totaling 32,425 feet of drilling was completed in June 2007 to attempt to increase the mineralized material (mineral resources under Canadian guidelines) in areas where the drill spacing is too wide to have confidence in the presence and grade of mineralized material within the planned pit, to expand the amount of mineralized material if possible, and to provide fresh samples for metallurgical testing. By the end of 2007, all gold assays had been received, with some check assays and base metals assays pending. In early 2008, we commissioned a new study to update estimates of mineralized material that would also include base metal content.

In late February 2008, we announced an NI 43-101 updated estimate for Vista Gold of mineralized material (mineral resources under Canadian guidelines) by Tetra Tech of Golden, Colorado. This updated estimate was completed under the direction of Mr. John Rozelle, P.G., an independent Qualified Person, utilizing standard industry software and estimation methodology. The study is titled “Mt Todd Gold Project Gold Resource Update, Northern Territory, Australia” and is dated March 14, 2008. It is available on SEDAR. Results of prior drilling plus the additional drilling we completed in 2007 were included in the estimate. Based on the report, under SEC Industry Guide 7 guidelines, mineralized material for the Batman deposit, above a cut-off grade of 0.015 gold ounces per ton, is estimated at 98,413,000 tons grading 0.029 gold ounces per ton, and represents an increase of 65% in mineralized material over the prior estimate.

At the same cut-off grade, under Canadian Institute of Mining, Metallurgy and Petroleum in the CIM Definition Standards, measured mineral resources are estimated at 47,987,000 tons grading 0.028 gold ounces per ton, indicated mineral resources are estimated at 50,425,000 tons grading 0.031 gold ounces per ton and inferred mineral resources are estimated at 64,832,000 tons grading 0.024 gold ounces per ton. **Cautionary Note to U.S. Investors: Mineral resources are not mineral reserves and there is no assurance that any mineral resources will ultimately be reclassified as proven or probable reserves. Mineral resources which are not mineral reserves do not have demonstrated economic viability. U.S. Investors should read the “Cautionary Note to U.S. Investors Regarding Reserve and Resource Estimates” above concerning the difference between “resources” and “reserves”.**

In April 2008, we announced an NI 43-101 estimate completed for Vista Gold of silver and copper mineralization in the Batman Deposit by Tetra Tech of Golden, Colorado. This estimate was completed under the direction of Mr. John Rozelle, P.G., an independent Qualified Person, utilizing standard industry software and estimation methodology. The study is titled “Mt Todd Gold Project Resource Update, Northern Territory, Australia” and is dated May 15, 2008. It is available on SEDAR. These resource estimates complement the updated estimate of gold mineralized material (gold mineral resources under Canadian guidelines) for the Batman deposit we announced in February, 2008. The estimates incorporate the results of 9,460 assay intervals from 25 drill holes (all core holes) drilled by Vista Gold in 2007 with assaying completed by Northern Australia Labs in Pine Creek and ALS-Chemex in Perth. These results are in addition to the results of 87 copper assays completed on random intervals from 730 drill holes (225 core, 435 reverse circulation and 70 rotary drill holes) done by BHP Resources Pty Ltd., Zapopan NL and Pegasus Gold Australia Pty Ltd. From the un-mined portion of the 730 drill holes previously completed (by BHP, Zapopan, & Pegasus), we submitted 2,979 intervals of core for re-assay and multi-element analysis. The re-assay and multi-element analysis was completed by ALS-Chemex in Perth and has been incorporated into the estimates. At a cut-off grade of 0.015 gold ounces per ton, under SEC Industry Guide 7 guidelines, silver measured material was estimated at 98,413,000 tons grading 0.043 silver ounces per ton.

At the same cut-off grade, under the Canadian Institute of Mining, Metallurgy and Petroleum in the CIM Definition Standards, measured mineral resources are estimated at 47,987,000 tons grading 0.042 silver ounces per ton, indicated mineral resources are estimated at 50,425,000 tons grading 0.045 silver ounces per ton and inferred mineral resources are estimated at 64,832,000 tons grading 0.050 silver ounces per ton. **Cautionary Note to U.S. Investors: Mineral resources are not mineral reserves and there is no assurance that any mineral resources will ultimately be reclassified as proven or probable reserves. Mineral resources which are not mineral reserves do not have demonstrated economic viability. U.S. Investors should read the “Cautionary Note to U.S. Investors Regarding Reserve and Resource Estimates” above concerning the difference between “resources” and “reserves”.**

At a cut-off grade of 0.015 gold ounces per ton, under SEC Industry Guide 7 guidelines, copper measured material was estimated at 98,413,000 tons grading 0.05% copper per ton.

At the same cut-off grade, under the Canadian Institute of Mining, Metallurgy and Petroleum in the CIM Definition Standards, measured mineral resources are estimated at 47,987,000 tons grading 0.05% copper per ton, indicated mineral resources are estimated at 50,425,000 tons grading 0.05% copper per ton and inferred mineral resources are estimated at 64,832,000 tons grading 0.05% copper per ton. **Cautionary Note to U.S. Investors: Mineral resources are not mineral reserves and there is no assurance that any mineral resources will ultimately be reclassified as proven or probable reserves. Mineral resources which are not mineral reserves do not have demonstrated economic viability. U.S. Investors should read the “Cautionary Note to U.S. Investors Regarding Reserve and Resource Estimates” above concerning the difference between “resources” and “reserves”.**

Also in 2008, we completed a 14-hole, 29,547-foot diamond drill program designed to test the down-dip extension of mineralization within the pit-shape drilled and evaluated in 2007, the continuity of mineralization below that pit shape and to obtain a sample for ongoing metallurgical testing.

In late January 2009, we announced the results of an updated NI 43-101 gold resource estimate on the Batman

Deposit completed for us by Tetra Tech of Golden, Colorado. This estimate was completed under the direction of Mr. John Rozelle, P.G., an independent Qualified Person, utilizing standard industry software and estimation methodology. The report is titled "Mt Todd Gold Project Gold Resource Update, Northern Territory, Australia" and is dated February 27, 2009. It is available on SEDAR. The updated estimate of mineralized material (mineral resource estimate under Canadian guidelines) incorporates the results of 7,367 assay intervals from 14 drill holes (all core holes) drilled by Vista Gold in 2008 with sample preparation and assaying completed by ALS Chemex. These results are in addition to the results of 100,685 assay intervals from 755 drill holes (250 core, 435 reverse circulation and 70 rotary drill holes) completed previously by BHP Resources Pty Ltd., Zapopan NL, Pegasus Gold Australia Pty Ltd. and Vista Gold, which were used in the previous updates of the Mt. Todd resource estimate. Based on the report, under SEC Industry Guide 7 guidelines, mineralized material for the Batman deposit, above a cut-off grade of 0.015 gold ounces per ton, is estimated at 165,985,000 tons grading 0.027 gold ounces per ton, and represents an increase of 57% in mineralized material over the prior estimate.

At the same cut-off grade, under the Canadian Institute of Mining, Metallurgy and Petroleum in the CIM Definition Standards, measured mineral resources are estimated at 49,212,000 tons grading 0.029 gold ounces per ton, indicated mineral resources are estimated at 116,773,000 tons grading 0.027 gold ounces per ton and inferred mineral resources are estimated at 73,551,000 tons grading 0.025 gold ounces per ton. **Cautionary Note to U.S. Investors: Mineral resources are not mineral reserves and there is no assurance that any mineral resources will ultimately be reclassified as proven or probable reserves. Mineral resources which are not mineral reserves do not have demonstrated economic viability. U.S. Investors should read the "Cautionary Note to U.S. Investors Regarding Reserve and Resource Estimates" above concerning the difference between "resources" and "reserves".**

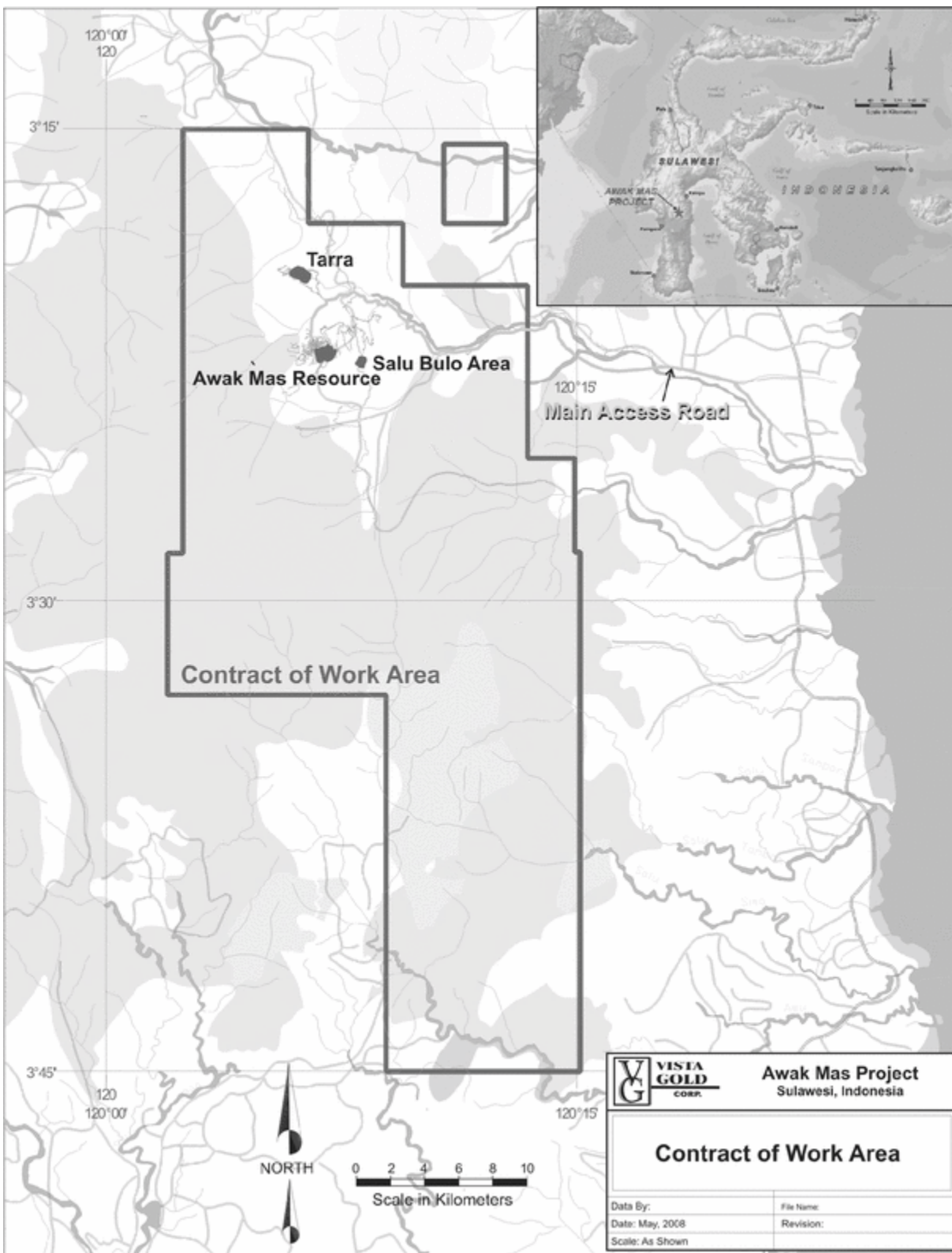
ALS Chemex was selected as the primary laboratory for preparation and analysis. Genalysis Labs was selected as the secondary laboratory to do the QA/QC checks. Samples were sent to each laboratory and testing facility in sealed padlocked crates. Each laboratory and testing facility was instructed to notify the Company immediately if a crate of samples arrived without the padlocks or if the globe seals were missing or showed evidence of tampering.

A metallurgical testing program using the core obtained in the 2007 and 2008 drilling programs is in progress. The goals of the program are to define the process flowsheet for the processing the Mt. Todd ore and to determine other key processing parameters, including energy requirements. As we announced in November 2008, preliminary tests using High Pressure Grinding Rolls have been very successful, indicating a reduction in crushing and grinding energy requirements compared to conventional technologies of approximately 30%. We plan to conduct additional studies in 2009 which will be used in the completion of a preliminary feasibility study for a project similar in scope to that considered in the previously published preliminary assessment (January 4, 2007).

Awak Mas

On May 27, 2005, we completed our acquisition of the Awak Mas gold deposit in Sulawesi, Indonesia, for a purchase price of \$1.5 million. The acquisition of the Awak Mas gold project involved the purchase, through the Corporation's wholly-owned subsidiary Vista Gold (Barbados) Corp. ("Vista Barbados"), of all of the outstanding shares of Salu Siwa Pty Ltd, an Australian company ("Salu Siwa") from the two owners of Salu Siwa: Weston Investments Pty Ltd., an Australian company ("Weston"), and Organic Resource Technology Limited, an Australian company ("ORT"). Weston and ORT respectively owned 66% and 34% of the outstanding Salu Siwa shares. Salu Siwa in turn owns 99% of the outstanding shares of PT Masmindo Dwi, an Indonesian company ("PT Masmindo"), which is the direct holder of the Awak Mas gold project. The remaining 1% of the outstanding PT Masmindo shares is held by Vista Barbados. This project is held by Vista Gold through a contract of work ("CoW") with the Indonesian government.

A map showing the location of the CoW and a table describing the land holding and holding requirements follow.



Awak Mas Land Holdings of Vista Gold

License Name	Serial Number	Federal Claim Type	Surface Area (hectares)	Location Description	Location Date	Expiration Date	Estimated Annual Holding Costs (US\$)	Work Requirements	Other
7th Generation Contract of Work	Notarial Deed No. 10 dated February 16, 1998, Decree of Minister of Justice No.C2-919, HT.01.01.TH.98 dated February 16, 1998	Contract of Work	89,650	Project centered at 12005' E. Longitude, 3020' S Latitude	1/19/1998	See description of COW following table.	Dead Rent US \$0.50/Ha and Land Tax US \$0.50/Ha	None	Gradual reduction of area to 25% of original.
Totals			89,650 hectares = 221,530 acres				\$89,650		

We completed the exploration phase of the CoW in January 2008 and entered the feasibility phase in February. The feasibility phase usually lasts one year, but may be negotiated for up to 2 one-year extensions. Following the feasibility phase, with government approvals, there would be a construction phase lasting usually three years. The operating period follows the construction phase, lasting usually 10 to 30 years. In late 2008, we applied for a suspension of the feasibility period for one year. We also applied for a reduction in area, as required, to eliminate the areas where we believe there is low potential to discover economic mineralization.

There are no known existing environmental liabilities to which the Awak Mas gold project is subject.

Location

The Awak Mas gold project is located in the Luwu District of southern Sulawesi, Indonesia, centered at 120°5' E and 3°20' S, near the coast at the head of the Gulf of Bone. The nearest major town is the coastal port of Palopo, which is approximately 40 miles northeast of the project site.

Access

The project is accessible by existing secondary paved and gravel public roads. The access roads will require improvements in order to support the loads associated with the construction of the project. At the present time, the project area is undeveloped with only a small office/camp complex and several sheds used for drill sample storage and the drill access roads constructed during the exploration phase.

Climate and Infrastructure

The Awak Mas gold project lies approximately 120 miles south of the equator and is characterized by a typical tropical maritime monsoonal climate, with hot wet summers (rainy season) and marginally milder and dryer winters. The annual average rainfall is 3,200 mm, with the dryer period extending from July through October. Temperatures during the rainy season generally range between 64 degrees Fahrenheit and 81 degrees Fahrenheit.

Year-round operations will be possible in this area.

The Awak Mas project area is mountainous, with steep razorback ridges and slope gradients generally ranging from 18° to 27°. The project is moderately to extremely rugged in the western portion, becoming more subdued in the east, with elevations ranging from near sea level to approximately 11,285 feet above mean sea level.

Small villages are located in this region of Sulawesi, with the closest major town Belopa some 24 miles west of the project area. The nearest major town with port facilities is Palopo, which is located approximately 41 miles northeast of the project.

Electrical power is presently supplied by diesel generator. Project power requirements may be supplied by diesel generated power or with commercial power from Palopo. If the latter is chosen, approximately 25 miles of new power line construction will be required. The project is located at the headwaters of a significant river system. We believe that a small water reservoir can be constructed to provide water for the project.

Geology and Mineralization

The Awak Mas property is situated on the southern side of the Central Sulawesi Metamorphic Belt within a 30-mile long, north-northeast trending fault-bounded block of basement metamorphic rocks and younger sediments. The property covers approximately 221,530 acres. The western margin of this block is represented by an easterly dipping thrust, whereas the eastern margin is defined by a major basement structure. Imbricate faulting has complicated the internal morphology of

the block. The property is dominated by the late Cretaceous Latimojong Formation, consisting of phyllites, slates, basic to intermediate volcanics, limestone and schist representing a platform and/or fore arc trough flysch sequence. The Latimojong Formation overlies basement metamorphic rocks dominated by phyllites and slates. Both sequences have been intruded by late-stage plugs and stocks of diorite, monzonite and syenite. To the east of the metamorphic block, basic intermediate intrusives, pyroclastics and volcanogenic sediments comprising the Mesozoic Lamasi Ophiolite Complex appear to have been obducted into a position effectively overlying the younger flyschoid sequence and basement metamorphics during continental accretion.

Gold mineralization is distinctly mesothermal in character, atypical of the more ubiquitous low temperature or epithermal precious metal mineralization within many island arc environments in Indonesia. Gold is associated with sulphur-poor, sodic-rich fluids introduced at a relatively late stage in the tectonic history. Albite-pyrite-silica-carbonate alteration, which accompanies gold deposition, clearly overprints the ductile fabric associated with deformation and metamorphism in the older basement lithologies.

The majority of gold mineralization on the property, including the Awak Mas deposit, is predominantly hosted within the flysch sequence, which typically dips at between 15° and 50°, generally towards the north. The majority of gold mineralization is associated with abundant quartz veining and silica-albite-pyrite alteration; however, the association of gold and quartz is not ubiquitous, with some vein zones appearing to be locally barren of mineralization.

Two main styles of mineralization are present. The first represents broad shallow dipping zones of sheeted and stockwork quartz veining and associated alteration that conform to the shear fabric, especially within the dark, graphitic mudstones. The other style consists of steeper dipping zones of quartz veining and breccias associated with high angle faults cutting both the flyschoid cover sequence and basement metamorphics.

Late-stage, north-northeast trending normal faults locally disrupt or offset mineralization. A surface layer of consolidated scree and colluvium averaging 1.8 to 2.4 feet (maximum 9 feet) in thickness veneers the deposit. The base of weak oxidation within the mineralized sequence typically is within 12 feet of surface.

A final feasibility study was completed by independent consultants in 1997 for Lone Star Exploration NL supporting a mining scenario of 3 million metric tons per year of ore. Independent valuations of the project were completed in 2000 and 2003 as well. Over \$43 million has been spent on the project by previous operators.

During 2005, we initiated an exploration program designed to identify drill targets in outlying surface indications of gold mineralization. The program involved soil and rock geochemistry, drilling shallow test holes to obtain bedrock samples, geologic mapping and interpretation of results. In 2006, we completed a 13-hole diamond drill program totaling 8,440 feet that was designed to upgrade shows of mineralization into reportable amounts.

Gustavson of Boulder, Colorado, completed a third-party NI 43-101 technical study for us in June 2007. This estimate was completed under the direction of Mr. John Rozelle, P.G., an independent Qualified Person, utilizing standard industry software and estimation methodology. The report is titled "Report NI 43-101, Technical Report on the Awak Mas Gold Project, Sulawesi, Indonesia" and is dated June 6, 2007. It is available on SEDAR. An assay database for 803 drill holes (654 core and 158 reverse circulation holes) totaling 319,639 feet of drilling was used to estimate mineralized material (mineral resources under Canadian guidelines). Based on the report, under SEC Industry Guide 7 guidelines, mineralized material for the deposit, above a cut-off grade of 0.015 gold ounces per ton, is estimated at 45,862,000 tons grading 0.036 gold ounces per ton.

At the same cut-off grade, under Canadian Institute of Mining, Metallurgy and Petroleum in the CIM Definition Standards, measured mineral resources are estimated at 7,084,000 tons grading 0.038 gold ounces per ton, indicated mineral resources are estimated at 38,150,000 tons grading 0.036 gold ounces per ton and inferred mineral resources are estimated at 22,468,000 tons grading 0.024 gold ounces per ton. **Cautionary Note to U.S. Investors: Mineral resources are not mineral reserves and there is no assurance that any mineral resources will ultimately be reclassified as proven or probable reserves. Mineral resources which are not mineral reserves do not have demonstrated economic viability. U.S. Investors should read the "Cautionary Note to U.S. Investors Regarding Reserve and Resource Estimates" above concerning the difference between "resources" and "reserves".**

Gustavson was commissioned in June 2007 to complete a preliminary assessment for Vista Gold of the project under NI 43-101 standards. The study was completed on January 16, 2008, under the direction of John Rozelle, an independent Qualified Person. The report is titled "Preliminary Assessment, Awak Mas Gold Project, Sulawesi, Indonesia" and is dated January 16, 2008. It is available on SEDAR. In undertaking the preliminary assessment, Gustavson considered the economic

and technical parameters associated with development of the mineralized material (mineral resources under Canadian guidelines) by open-pit mining. The study included a process flowsheet based on three stages of laboratory and pilot plant test programs from 1994 to 1997. The flowsheet was developed by Minproc Engineers Ltd. in 1997, and reviewed and approved by Resource Development Inc. of Wheat Ridge, Colorado, for this study. The flowsheet includes a flotation circuit to recover gold associated with sulfide minerals following which the concentrate would be treated in a carbon-in-leach circuit to recover the gold. The benign tailings from the flotation circuit would flow by gravity into a tailings impoundment and the sulfide tailings would be detoxified, filtered and conveyed to a small "dry-stack" sulfide tailings storage facility. MWH Americas Inc. of Denver and Steamboat Springs, Colorado, prepared the tailings disposal sites layout and closure plans, and assessed permitting requirements. The potential development included four different scenarios that would produce an estimated 0.6 to 1.0 million ounces of gold over a project life of 7 to 15 years. Gustavson estimated the preproduction capital to be \$124 million to \$178 million, depending on the scenario, and the total capital cost over the project life to be \$148 million to \$218 million. The cost estimates used in the preparation of a preliminary assessment are generally accepted as being within plus or minus 35 to 40% of what might be incurred in actual construction and operations. The costs in the Awak Mas preliminary assessment are within this level of confidence. However, this preliminary assessment uses mineral resources (mineralized material under SEC Industry Guide 7) and not mineral reserves. Mineral resources (mineralized material under SEC Industry Guide 7) that are not mineral reserves do not have demonstrated economic viability. A determination of mineral reserves would be necessary to demonstrate economic viability of the Awak Mas gold project.

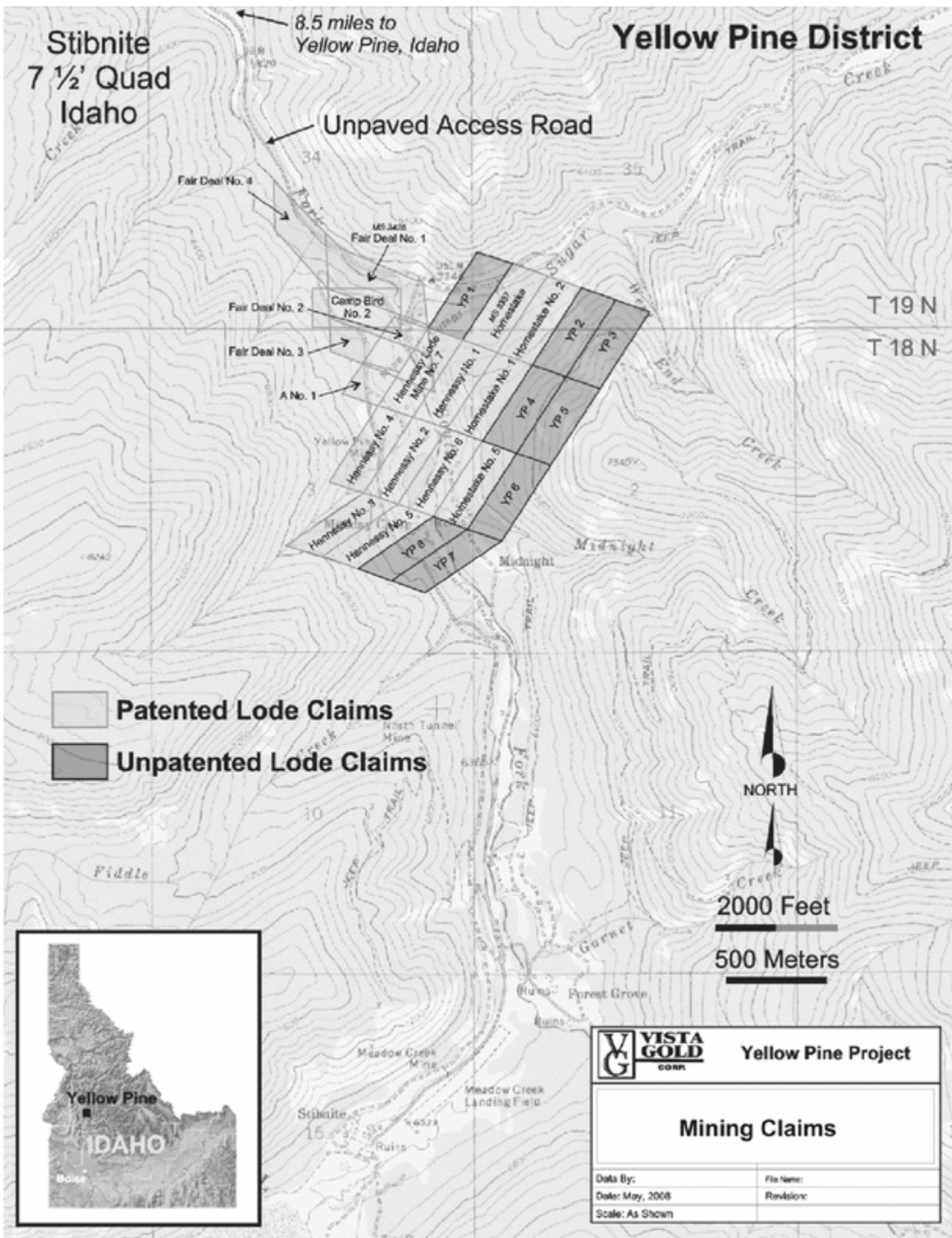
It is Gustavson's opinion that the reports by the various companies and consultants who verified the sampling and assaying procedures throughout the history of the property fairly represent the sampling and assaying history at the site, and that the procedures implemented by the operators have resulted in an assay database that fairly represents the tenor of the mineralization at the Awak Mas gold project.

It is also Gustavson' s opinion that we have a well-documented and implemented sampling program that meets current industry practices for acceptability and accuracy.

Compliance with environmental laws and standards and the environmental permitting process (Indonesian acronym AMDAL) to conduct mining activities will require an AMDAL study. The details of the permitting process are summarized in the Technical Report. We will initiate permitting at the appropriate time.

Yellow Pine

The Yellow Pine gold project is located in the Salmon River Mountains of central Idaho in an area of historical gold, antimony and tungsten mining known as the Stibnite or Yellow Pine Mining District. The district is located in Valley County about 60 miles east of McCall, Idaho, and 10 miles southeast of the small settlement of Yellow Pine, Idaho. The project consists of 17 patented mining claims covering about 304 acres. A map showing the location of the mining claims and a table with a list of the mining claims and the holding requirements follow.



Patented Mining Claims at Yellow Pine Controlled by Vista Gold

Claim Name	Mineral Survey Number	Patent Number	Federal Claim Type	Surface Area (acres)	Location (Section, Township and Range)	Date Patent Recorded	Annual Holding Requirements
Fair Deal No. 1	3246	1064103	Patented Lode Mining Claim		Section 34, T19N, R9E, BM	6/7/1933	None to Vista Gold, Bradley (as defined)

Fair Deal No. 2	3246	1064103	Patented Lode Mining Claim		Section 34, T19N, R9E, BM	6/7/1933
Fair Deal No. 3	3246	1064103	Patented Lode Mining Claim	81.174	Section 3, T18N, R9E, BM	6/7/1933
Fair Deal No. 4	3246	1064103	Patented Lode Mining Claim		Section 34, T19N, R9E, BM	6/7/1933
Camp Bird No. 2	3246	1064103	Patented Lode Mining Claim		Section 34, T19N, R9E, BM	6/7/1933
A No. 1	3246	1064103	Patented Lode Mining Claim		Section 3, T18N, R9E, BM	6/7/1933
Hennessy No. 1	3357	1111588	Patented Lode Mining Claim	218.897	Sections 2 & 3, T18N, R9E, BM	7/9/1941
Hennessy No. 2	3357	1111588	Patented Lode Mining Claim		Section 3, T18N, R9E, BM	7/9/1941
Hennessy No. 3	3357	1111588	Patented Lode Mining Claim		Section 3, T18N, R9E, BM	7/9/1941
Hennessy No. 4	3357	1111588	Patented Lode Mining Claim		Section 3, T18N, R9E, BM	7/9/1941
Hennessy No. 5	3357	1111588	Patented Lode Mining Claim		Section 3, T18N, R9E, BM	7/9/1941
Hennessy No. 6	3357	1111588	Patented Lode Mining Claim		Sections 2 & 3, T18N, R9E, BM	7/9/1941
Hennessy Lode Mine No. 7	3357	1111588	Patented Lode Mining Claim		Section 3, T18N, R9E, BM	7/9/1941

<u>Claim Name</u>	<u>Mineral Survey Number</u>	<u>Patent Number</u>	<u>Federal Claim Type</u>	<u>Surface Area (acres)</u>	<u>Location Description (Section, Township and Range)</u>	<u>Date Patent Recorded</u>	<u>Annual Holding Requirements</u>
Homestake	3357	1111588	Patented Lode Mining Claim		Section 35, T19N, R9E, BM	7/9/1941	

Homestake No. 1	3357	1111588	Patented Lode Mining Claim	Sections 2 & 3, T18N, R9E, BM	7/9/1941
Homestake No. 2	3357	1111588	Patented Lode Mining Claim	Section 35, T19N, R9E, BM	7/9/1941
Homestake No. 5	3357	1111588	Patented Lode Mining Claim	Sections 2 & 3, T18N, R9E, BM	7/9/1941
Totals			17 Patented Lode Mining Claims		\$ 0

Unpatented Mining Claims at Yellow Pine Controlled by Vista Gold

Claim Name	Serial Number	Federal Claim Type	Surface Area (acres)	Location Description (Section, Township and Range)	Location Date	Annual Holding Fee
YP 1	186740	Unpatented Lode Mining Claim	20.66	Sections 34 & 35, T19N, R9E, BM	10/15/2003	\$ 125.00
YP 2	186741	Unpatented Lode Mining Claim	20.66	Section 2, T18N, R9E, BM	10/15/2003	\$ 125.00
YP 3	186742	Unpatented Lode Mining Claim	20.66	Section 2, T18N, R9E, BM	10/15/2003	\$ 125.00
YP 4	186743	Unpatented Lode Mining Claim	20.66	Section 2, T18N, R9E, BM	10/15/2003	\$ 125.00
YP 5	186744	Unpatented Lode Mining Claim	20.66	Sections 2 & 3, T18N, R9E, BM	10/15/2003	\$ 125.00
YP 6	186745	Unpatented Lode Mining Claim	20.66	Section 2, T18N, R9E, BM	10/15/2003	\$ 125.00
YP 7	186746	Unpatented Lode Mining Claim	20.66	Section 2 & 3, T18N, R9E, BM	10/15/2003	\$ 125.00
YP 8	186747	Unpatented Lode Mining Claim	20.66	Section 3, T18N, R9E, BM	10/15/2003	\$ 125.00
Totals		8 Unpatented Lode Mining Claims	165.28			\$ 1,000.00

Note: all claims are Unpatented Federal Lode Mining Claims and do not expire provided annual fees are paid by August 31 of each year.

On November 7, 2003, Vista Gold, through Idaho Gold Resources LLC (“Idaho Gold”), an indirect, wholly-owned subsidiary of Vista Gold, entered into an Option to Purchase Agreement with Bradley Mining Company (“Bradley”) for a nine year option to purchase 100% of Yellow Pine for \$1,000,000. Idaho Gold made an option payment of \$100,000 upon execution of the agreement. The agreement calls for Idaho Gold to make nine more yearly payments of \$100,000 on or before each anniversary date of the agreement, for a total option payment price of \$1,000,000, and annual payments of \$100,000 each were made in 2004, 2005, 2006, 2007 and 2008 (see Consolidated Financial Statements–Note 5). If Idaho Gold exercises its option to purchase the project, all option payments shall be applied as a credit against the purchase price of \$1,000,000. Idaho Gold has the right to terminate the agreement at any time without penalty. Eleven of the claims are subject to an underlying 5% net smelter returns royalty.

There are no known existing environmental liabilities to which the Yellow Pine gold project is subject.

Access

The project is accessible by existing public gravel roads. The town of Yellow Pine, Idaho, has year-round access. From Yellow Pine, the remaining 11 miles of access to the project is by means of a gravel road that is presently not passable in the winter months.

Climate and Infrastructure

The climate is characterized by robust winters and mild summers. Most precipitation comes as snowfall, with low to moderate rainfall generally occurring as afternoon thunderstorms in the warmer months. Winter temperatures may fall to -40 degrees Fahrenheit. Summer temperatures may reach 80 degrees Fahrenheit but daily temperature ranges can be substantial. The average daily maximum is 54.6 degrees Fahrenheit, minimum is 23.6 degrees Fahrenheit, and mean average is 39.1 degrees Fahrenheit. Frost can occur any day of the year at elevations greater than 7,000 feet. Mean annual precipitation is 27.6 inches, falling mostly as snow.

The area is comprised of rugged forested mountainous terrain that is drained to the west by the East Fork of the South Fork of the Salmon River (EFSF). Elevations range from about 6,000 feet to more than 9,000 feet above sea level. The Yellow Pine pit is partially filled with water and the EFSF of the Salmon River runs through the pit.

The main characteristics of the ecosystem in the EFSF Salmon River drainage consists of several conifer cover types, shrubs typically alder, huckleberry, spiera, willows, and grasses. The conifers in the area are dominated by Douglas-fir and grand-fir. Subalpine fir and lodgepole pine dominate the higher elevations. Whitebark pine grows along the ridge tops above 7,000 feet.

The Yellow Pine Mine operated on an irregular basis from 1938 to 1952. There is a small open pit and some old buildings in various states of disrepair. At the present time, Vista Gold has no installations at or near the Yellow Pine gold project.

There is no present source of power at the Yellow Pine gold project, nor has planning advanced to the point of determining the source of power for the project. At the present, it is assumed that water for the project will be available from wells, pit de-watering, and/or the East Fork of the South Fork of the Salmon River, but our planning has not advanced to the point of a definitive determination.

The nearest town, Yellow Pine, has a population of only about 60 people and limited services such as gasoline, a general store and a few lodging facilities. The tourist towns of McCall and Cascade, however, have a population of several thousand people and are located about 90 and 60 miles respectively, north of Boise along a major paved state highway with most services available, including air service for small planes. A dirt road air landing strip still exists near the Meadow Creek old processing facilities located about two miles south of the Yellow Pine pit and is in fair condition.

History

The mining history of the region began in 1893 when gold was discovered by the Caswell brothers in what is now known as the Thunder Mountain mining district, located about 10 miles east of Stibnite. Around 1900, during the gold rush to the Thunder Mountain district mercury, antimony and gold were found in the Yellow Pine district. Since the time of the gold rush, the Yellow Pine area has been actively explored. Further historical details relating to the Yellow Pine project can be found in the report entitled “CNI 43-101 Technical Report, Preliminary Assessment of the Yellow Pine Project, Yellow Pine,

Idaho” and is dated December 13, 2006 and available on SEDAR.

Geology and Mineralization

The Yellow Pine Mining District is located within the Cretaceous age Idaho Batholith, near its eastern border and adjacent to the Meadow Creek fault zone. The gold deposits of the Yellow Pine district are hosted primarily in the quartz monzonites of the Idaho batholith and within the major shear and fault zones that transect the district. Ore deposits also occur in the metasediments of a large roof pendant within the granitic rocks. Historic mining of the Yellow Pine and the Homestake open pits on the Yellow Pine property has depleted the oxide gold mineralization, but significant sulfide gold mineralization remains unmined. Historically, the mine has produced about 700,000 ounces of gold from a combination of byproduct gold from tungsten and antimony mining and more recent heap-leach production from oxide ore.

Gold and antimony occur principally in veinlets, stockworks, fissure-fillings, and massive lenses. Gold appears to be associated with pyrite and arsenopyrite whereas silver is associated with antimony. The primary gold mineralization occurs within a zone of stockwork sulfide veinlets also containing stibnite, pyrite and arsenopyrite. The principal antimony mineral is stibnite. Tungsten occurs in the mineral scheelite. Deposits are characterized by argillic and sericitic alteration with some silicification.

The Meadow Creek fault and its subsidiary structures trend north and northeast across the district and are a major controlling factor on the regional mineralization. The Yellow Pine mine, the largest mineralized area, is located in the Meadow Creek fault hanging wall, where the fault strike changes from northerly to northeasterly and a zone of stockwork sulfide veining occurs. The mineralized zone is about 2,000 feet long by 700 feet wide with a vertical extent of up to about 1,000 feet. It is cone shaped with the narrower, bottom area of the cone indicating possible continuity of the mineralization at depth both down dip along the hanging wall of the Meadow Creek fault and to the northwest.

The Homestake area appears as a continuation to the northeast of the Yellow Pine zone. The two zones have some similarities as well as differences. The Homestake sulfide zone is also directly associated with the Meadow Creek fault. It appears however to have a somewhat different structural style from the Yellow Pine area. The mineralized zone is about 1,500 feet long by 600 feet wide and up to 350 feet vertically. It has an overall tabular shape with a true width of about 100 to 200 feet. Drill hole information indicates that the mineralization at Homestake is encountered in both the hanging wall of the Meadow Creek fault zone as well as the footwall. Gold grades tend to be quite a bit lower than at the Yellow Pine area. The Yellow Pine and Homestake sulfide zones may be interconnected.

Pincock, Allen & Holt (“PAH”), of Denver, Colorado, completed an NI 43-101 third-party technical study for us in November 2003, under the direction of Mark G. Stevens, C.P.G., an independent Qualified Person, utilizing standard industry software and estimation methodology. The report is titled “Yellow Pine Project, Idaho, USA, Technical Report” and is dated November 17, 2003. It is available on SEDAR. An assay database for 538 drill holes totaling 120,922 feet of drilling was used to estimate mineral resources (mineralized material under SEC Industry Guide 7) in the Yellow Pine and Homestake sulfide zones. The overall drill hole spacing at Yellow Pine is about 50 to 100 feet and about 100 to 150 feet at the Homestake area. Based on the report, under SEC Industry Guide 7 guidelines, mineralized material for the Yellow Pine gold project, above a cut-off grade of 0.025 gold ounces per ton, is estimated at 33,835,000 tons grading 0.066 gold ounces per ton.

At the same cut-off grade, under Canadian Institute of Mining, Metallurgy and Petroleum in the CIM Definition Standards, measured mineral resources are estimated at 16,332,000 tons grading 0.070 gold ounces per ton, indicated mineral resources are estimated at 17,503,000 tons grading 0.061 gold ounces per ton and inferred mineral resources are estimated at 16,047,000 tons grading 0.051 gold ounces

per ton. **Cautionary Note to U.S. Investors: Mineral resources are not mineral reserves and there is no assurance that any mineral resources will ultimately be reclassified as proven or probable reserves. Mineral resources which are not mineral reserves do not have demonstrated economic viability. U.S. Investors should read the “Cautionary Note to U.S. Investors Regarding Reserve and Resource Estimates” above concerning the difference between “resources” and “reserves”.**

In November 2006, PAH completed a NI 43-101 preliminary assessment under the direction of Richard Lambert, P.E. and Barton Stone, P.G., both independent Qualified Persons. The study is titled “CNI 43-101 Technical Report, Preliminary Assessment of the Yellow Pine Project, Yellow Pine, Idaho” and is dated December 13, 2006. It is available on SEDAR. In undertaking the preliminary assessment, PAH considered the economic and technical parameters associated with development of the mineralization by open-pit mining. The study, based on PAH’s review of previous technical studies and their own work, determined the best treatment approach would be an on-site plant to produce a flotation concentrate that would be refined off-site. The potential development would produce an estimated 1.9 million

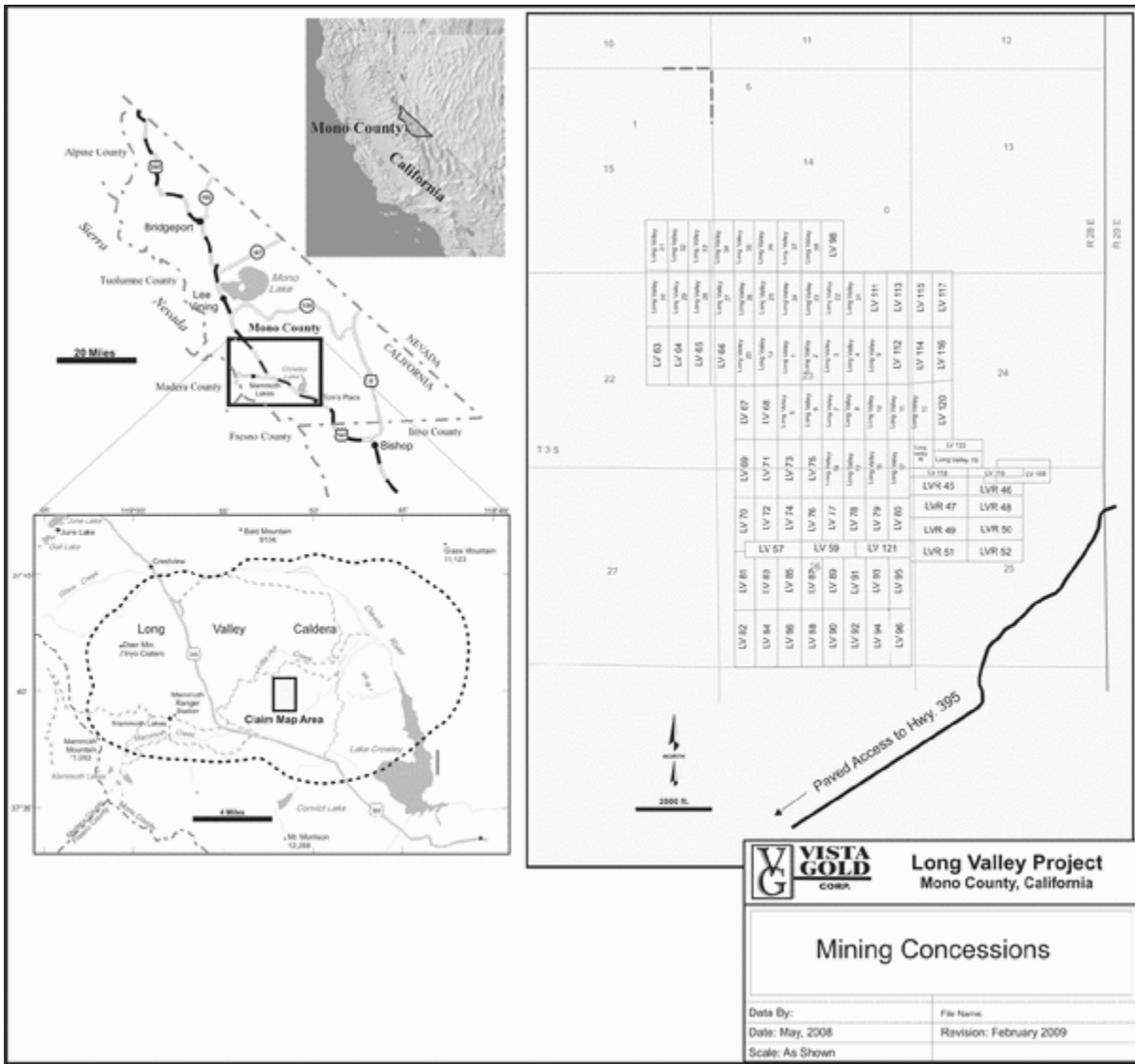
ounces of gold over a 10-year life. PAH estimated the total capital cost over the project life to be \$170 million and preproduction capital to be \$150 million. The cost estimates used in the preparation of a preliminary assessment are generally accepted as being within plus or minus 35 to 40% of what might be incurred in actual construction and operations. The costs in the Yellow Pine preliminary assessment are within this level of confidence. However, this preliminary assessment uses mineral resources (mineralized material under SEC Industry Guide 7) and not mineral reserves. Mineral resources (mineralized material under SEC Industry Guide 7) that are not mineral reserves do not have demonstrated economic viability. A determination of mineral reserves would be necessary to demonstrate economic viability of the Yellow Pine gold project.

PAH conducted a data validation of the existing Yellow Pine drill hole database provided by us. Very few errors were identified.

PAH believes that the companies that explored and developed the Yellow Pine deposit generally conducted sampling and analysis programs using standard practices, providing generally reasonable results. PAH believes that the resulting data can effectively be used in the subsequent estimation of resources.

Long Valley

The Long Valley gold project is located in the Inyo National Forest, about 7 miles east of the town of Mammoth Lakes, in Mono County, California. The property consists of 95 contiguous, unpatented mining claims that cover an area of approximately 1,963 acres. A location map and table describing the claims held by Vista Gold follow.



Unpatented Mining Claims at Long Valley Controlled by Vista Gold

Claim Name	Serial Number	Federal Claim Type	Surface Area (acres)	Location Description (Section, Township and Range)	Location Date	Annual Holding Fee
Long Valley 1	231947	Unpatented Lode Mining Claim	20.66	Section 23, T3S, R28E, MDM	9/25/1989	\$ 125
Long Valley 2	231948	Unpatented Lode Mining Claim	20.66	Section 23, T3S, R28E, MDM	9/25/1989	\$ 125
Long Valley 3	231949	Unpatented Lode Mining Claim	20.66	Section 23, T3S, R28E, MDM	9/25/1989	\$ 125
Long Valley 4	231950	Unpatented Lode Mining Claim	20.66	Section 23, T3S, R28E, MDM	9/25/1989	\$ 125
Long Valley 5	231951	Unpatented Lode Mining Claim	20.66	Section 23, T3S, R28E, MDM	9/25/1989	\$ 125
Long Valley 6	231952	Unpatented Lode Mining Claim	20.66	Section 23, T3S, R28E, MDM	9/25/1989	\$ 125
Long Valley 7	231953	Unpatented Lode Mining Claim	20.66	Section 23, T3S, R28E, MDM	9/25/1989	\$ 125
Long Valley 8	231954	Unpatented Lode Mining Claim	20.66	Section 23, T3S, R28E, MDM	9/25/1989	\$ 125

Long Valley 9	231955	Unpatented Lode Mining Claim	20.66	Section 23, T3S, R28E, MDM	11/13/1989	\$	125
Long Valley 10	231956	Unpatented Lode Mining Claim	20.66	Section 23, T3S, R28E, MDM	11/13/1989	\$	125
Long Valley 11	231957	Unpatented Lode Mining Claim	20.66	Section 23, T3S, R28E, MDM	11/13/1989	\$	125
Long Valley 12	237721	Unpatented Lode Mining Claim	20.66	Section 23, T3S, R28E, MDM	7/6/1990	\$	125
Long Valley 13	237722	Unpatented Lode Mining Claim	20.66	Section 24, T3S, R28E, MDM	7/7/1990	\$	125
Long Valley 14	237723	Unpatented Lode Mining Claim	20.66	Sections 23 & 26, T3S, R28E, MDM	7/6/1990	\$	125
Long Valley 15	237724	Unpatented Lode Mining Claim	20.66	Sections 23 & 26, T3S, R28E, MDM	7/6/1990	\$	125
Long Valley 16	237725	Unpatented Lode Mining Claim	20.66	Sections 23 & 26, T3S, R28E, MDM	7/6/1990	\$	125

Claim Name	Serial Number	Federal Claim Type	Surface Area (acres)	Location Description	Location Date	Annual Holding Fee
				(Section, Township and Range)		
Long Valley 17	237726	Unpatented Lode Mining Claim	20.66	Sections 23 & 26, T3S, R28E, MDM	7/6/1990	\$ 125
Long Valley 18	237727	Unpatented Lode Mining Claim	20.66	Section 24, T3S, R28E, MDM	7/7/1990	\$ 125
Long Valley 19	237728	Unpatented Lode Mining Claim	20.66	Section 24, T3S, R28E, MDM	7/7/1990	\$ 125
Long Valley 20	237729	Unpatented Lode Mining Claim	20.66	Section 23, T3S, R28E, MDM	7/7/1990	\$ 125
Long Valley 21	237730	Unpatented Lode Mining Claim	20.66	Sections 14 & 23, T3S, R28E, MDM	7/8/1990	\$ 125
Long Valley 22	237731	Unpatented Lode Mining Claim	20.66	Sections 14 & 23, T3S, R28E, MDM	7/8/1990	\$ 125
Long Valley 23	237732	Unpatented Lode Mining Claim	20.66	Sections 14 & 23, T3S, R28E, MDM	7/8/1990	\$ 125
Long Valley 24	237733	Unpatented Lode Mining Claim	20.66	Sections 14 & 23, T3S, R28E, MDM	7/8/1990	\$ 125
Long Valley 25	237734	Unpatented Lode Mining Claim	20.66	Sections 14 & 23, T3S, R28E, MDM	7/8/1990	\$ 125
Long Valley 26	237735	Unpatented Lode Mining Claim	20.66	Sections 14 & 23, T3S, R28E, MDM	7/7/1990	\$ 125
Long Valley 27	237736	Unpatented Lode Mining Claim	20.66	Sections 14, 15, 22 & 23, T3S, R28E, MDM	7/7/1990	\$ 125
Long Valley 28	237737	Unpatented Lode Mining Claim	20.66	Sections 15 and 22, T3S, R28E, MDM	7/7/1990	\$ 125
Long Valley 29	237738	Unpatented Lode Mining Claim	20.66	Sections 15 and 22, T3S, R28E, MDM	7/7/1990	\$ 125
Long Valley 30	237739	Unpatented Lode Mining Claim	20.66	Sections 15 and 22, T3S, R28E, MDM	7/7/1990	\$ 125

Long Valley 31	237740	Unpatented Lode Mining Claim	20.66	Section 15, T3S, R28E, MDM	7/7/1990	\$	125
Long Valley 32	237741	Unpatented Lode Mining Claim	20.66	Section 15, T3S, R28E, MDM	7/7/1990	\$	125
Long Valley 33	237742	Unpatented Lode Mining Claim	20.66	Section 15, T3S, R28E, MDM	7/7/1990	\$	125

Claim Name	Serial Number	Federal Claim Type	Surface Area (acres)	Location Description (Section, Township and Range)	Location Date	Annual Holding Fee
Long Valley 34	237743	Unpatented Lode Mining Claim	20.66	Sections 14, 15, 22, & 23 T3S, R28E, MDM	7/7/1990	\$ 125
Long Valley 35	237744	Unpatented Lode Mining Claim	20.66	Section 14, T3S, R28E, MDM	7/7/1990	\$ 125
Long Valley 36	237745	Unpatented Lode Mining Claim	20.66	Section 14, T3S, R28E, MDM	7/8/1990	\$ 125
Long Valley 37	237746	Unpatented Lode Mining Claim	20.66	Section 14, T3S, R28E, MDM	7/8/1990	\$ 125
Long Valley 38	237747	Unpatented Lode Mining Claim	20.66	Section 14, T3S, R28E, MDM	7/8/1990	\$ 125
LVR 45	275118	Unpatented Lode Mining Claim	20.66	Section 25, T3S, R28E, MDM	11/18/1998	\$ 125
LVR 46	275119	Unpatented Lode Mining Claim	20.66	Section 25, T3S, R28E, MDM	11/19/1998	\$ 125
LVR 47	275120	Unpatented Lode Mining Claim	20.66	Section 25, T3S, R28E, MDM	11/20/1998	\$ 125
LVR 48	275121	Unpatented Lode Mining Claim	20.66	Section 25, T3S, R28E, MDM	11/21/1998	\$ 125
LVR 49	275122	Unpatented Lode Mining Claim	20.66	Section 25, T3S, R28E, MDM	11/22/1998	\$ 125
LVR 50	275123	Unpatented Lode Mining Claim	20.66	Section 25, T3S, R28E, MDM	11/23/1998	\$ 125
LVR 51	275124	Unpatented Lode Mining Claim	20.66	Section 25, T3S, R28E, MDM	11/24/1998	\$ 125
LVR 52	275125	Unpatented Lode Mining Claim	20.66	Section 25, T3S, R28E, MDM	11/25/1998	\$ 125
LV 57	270604	Unpatented Lode Mining Claim	20.66	Section 26, T3S, R28E, MDM	11/7/1996	\$ 125
LV 59	270605	Unpatented Lode Mining Claim	20.66	Section 26, T3S, R28E, MDM	11/7/1996	\$ 125
LV 63	242259	Unpatented Lode Mining Claim	20.66	Section 22, T3S, R28E, MDM	12/5/1990	\$ 125

Claim Name	Serial Number	Federal Claim Type	Surface Area (acres)	Location Description		Annual Holding Fee
				(Section, Township and Range)	Location Date	
LV 64	242260	Unpatented Lode Mining Claim	20.66	Section 22, T3S, R28E, MDM	12/5/1990	\$ 125
LV 65	242261	Unpatented Lode Mining Claim	20.66	Section 22, T3S, R28E, MDM	12/5/1990	\$ 125
LV 66	242262	Unpatented Lode Mining Claim	20.66	Sections 22 & 23, T3S, R28E, MDM	12/5/1990	\$ 125
LV 67	242263	Unpatented Lode Mining Claim	20.66	Sections 23, T3S, R28E, MDM	12/6/1990	\$ 125
LV 68	242264	Unpatented Lode Mining Claim	20.66	Sections 23, T3S, R28E, MDM	12/6/1990	\$ 125
LV 69	242265	Unpatented Lode Mining Claim	20.66	Sections 23 & 26, T3S, R28E, MDM	12/6/1990	\$ 125
LV 70	242266	Unpatented Lode Mining Claim	20.66	Section 26, T3S, R28E, MDM	12/6/1990	\$ 125
LV 71	242267	Unpatented Lode Mining Claim	20.66	Sections 23 & 26, T3S, R28E, MDM	12/6/1990	\$ 125
LV 72	242268	Unpatented Lode Mining Claim	20.66	Section 26, T3S, R28E, MDM	12/6/1990	\$ 125
LV 73	242269	Unpatented Lode Mining Claim	20.66	Sections 23 & 26, T3S, R28E, MDM	12/6/1990	\$ 125
LV 74	242270	Unpatented Lode Mining Claim	20.66	Section 26, T3S, R28E, MDM	12/6/1990	\$ 125
LV 75	242271	Unpatented Lode Mining Claim	20.66	Sections 23 & 26, T3S, R28E, MDM	12/6/1990	\$ 125
LV 76	242272	Unpatented Lode Mining Claim	20.66	Section 26, T3S, R28E, MDM	12/6/1990	\$ 125
LV 77	242273	Unpatented Lode Mining Claim	20.66	Section 26, T3S, R28E, MDM	12/6/1990	\$ 125
LV 78	242274	Unpatented Lode Mining Claim	20.66	Section 26, T3S, R28E, MDM	12/6/1990	\$ 125
LV 79	242275	Unpatented Lode Mining Claim	20.66	Section 26, T3S, R28E, MDM	12/6/1990	\$ 125

Claim Name	Serial Number	Federal Claim Type	Surface Area (acres)	Location Description		Annual Holding Fee
				(Section, Township and Range)	Location Date	
LV 80	242276	Unpatented Lode Mining Claim	20.66	Section 26, T3S, R28E, MDM	12/6/1990	\$ 125
LV 81	242277	Unpatented Lode Mining Claim	20.66	Section 26, T3S, R28E, MDM	12/7/1990	\$ 125
LV 82	242278	Unpatented Lode Mining Claim	20.66	Section 26, T3S, R28E, MDM	12/7/1990	\$ 125
LV 83	242279	Unpatented Lode Mining Claim	20.66	Section 26, T3S, R28E, MDM	12/7/1990	\$ 125

LV 84	242280	Unpatented Lode Mining Claim	20.66	Section 26, T3S, R28E, MDM	12/7/1990	\$	125
LV 85	242281	Unpatented Lode Mining Claim	20.66	Section 26, T3S, R28E, MDM	12/7/1990	\$	125
LV 86	242282	Unpatented Lode Mining Claim	20.66	Section 26, T3S, R28E, MDM	12/7/1990	\$	125
LV 87	242283	Unpatented Lode Mining Claim	20.66	Section 26, T3S, R28E, MDM	12/7/1990	\$	125
LV 88	242284	Unpatented Lode Mining Claim	20.66	Section 26, T3S, R28E, MDM	12/7/1990	\$	125
LV 89	242285	Unpatented Lode Mining Claim	20.66	Section 26, T3S, R28E, MDM	12/7/1990	\$	125
LV 90	242286	Unpatented Lode Mining Claim	20.66	Section 26, T3S, R28E, MDM	12/7/1990	\$	125
LV 91	242287	Unpatented Lode Mining Claim	20.66	Section 26, T3S, R28E, MDM	12/7/1990	\$	125
LV 92	242288	Unpatented Lode Mining Claim	20.66	Section 26, T3S, R28E, MDM	12/7/1990	\$	125
LV 93	242289	Unpatented Lode Mining Claim	20.66	Section 26, T3S, R28E, MDM	12/7/1990	\$	125
LV 94	242290	Unpatented Lode Mining Claim	20.66	Section 26, T3S, R28E, MDM	12/7/1990	\$	125
LV 95	242291	Unpatented Lode Mining Claim	20.66	Section 26, T3S, R28E, MDM	12/7/1990	\$	125

Claim Name	Serial Number	Federal Claim Type	Surface Area (acres)	Location Description		Annual Holding Fee
				(Section, Township and Range)	Location Date	
LV 96	242292	Unpatented Lode Mining Claim	20.66	Section 26, T3S, R28E, MDM	12/7/1990	\$ 125
LV 98	242294	Unpatented Lode Mining Claim	20.66	Section 14, T3S, R28E, MDM	12/8/1990	\$ 125
LV 111	242307	Unpatented Lode Mining Claim	20.66	Sections 14 & 23, T3S, R28E, MDM	12/9/1990	\$ 125
LV 112	242308	Unpatented Lode Mining Claim	20.66	Section 23, T3S, R28E, MDM	12/9/1990	\$ 125
LV 113	242309	Unpatented Lode Mining Claim	20.66	Sections 14 & 23, T3S, R28E, MDM	12/9/1990	\$ 125
LV 114	242310	Unpatented Lode Mining Claim	20.66	Sections 23 & 24, T3S, R28E, MDM	12/9/1990	\$ 125
LV 115	242311	Unpatented Lode Mining Claim	20.66	Sections 13, 14, 23 & 24, T3S, R28E, MDM	12/9/1990	\$ 125
LV 116	242312	Unpatented Lode Mining Claim	20.66	Section 24, T3S, R28E, MDM	12/9/1990	\$ 125
LV 117	242313	Unpatented Lode Mining Claim	20.66	Sections 13 & 24, T3S, R28E, MDM	12/9/1990	\$ 125
LV 118	270618	Unpatented Lode Mining Claim	20.66	Section 25, T3S, R28E, MDM	11/7/1996	\$ 125

LV 119	270619	Unpatented Lode Mining Claim	20.66	Section 25, T3S, R28E, MDM	11/7/1996	\$	125
LV 120	242316	Unpatented Lode Mining Claim	20.66	Section 24, T3S, R28E, MDM	12/9/1990	\$	125
LV 121	270620	Unpatented Lode Mining Claim	20.66	Section 26, T3S, R28E, MDM	11/7/1996	\$	125
LV 122	242318	Unpatented Lode Mining Claim	20.66	Section 24, T3S, R28E, MDM	12/10/1990	\$	125
Totals		95 Unpatented Lode Mining Claims	1,962.70			\$	11,875

Note: all claims are Unpatented Federal Lode Mining Claims and do not expire provided annual fees are paid by August 31 of each year.

On January 22, 2003, we executed an option agreement to acquire 100% of the Long Valley gold project from Standard Industrial Minerals, Inc. (“Standard”). Under the terms of the option agreement, we agreed to pay Standard \$750,000 over five years, with annual payments to be due as follows: \$100,000 due on each of January 15, 2003, 2004, and 2005; \$200,000 due on January 15, 2006, and \$250,000 due on January 15, 2007. We made these payments (see Consolidated Financial Statements–Note 5), and in January 2007, exercised our option to purchase the property, which is held through Vista Gold California LLC, an indirect, wholly-owned subsidiary of Vista Gold.

During the period of 1994 through 1997, Royal Gold, Inc. (“Royal”) drilled 615 reverse circulation and 10 core holes at the Long Valley property. During this time, Royal also completed metallurgical investigations, preliminary engineering studies, including resource estimations, and initiated baseline-type environmental studies of the biological, water and archeological resources of the area. We have acquired all related data from Royal in exchange for a 1% net smelter returns royalty to Royal. The database contains 896 drill holes, totaling 268,275 feet. The majority of holes were drilled using reverse circulation methods. Gold was primarily analyzed by fire assay, with grade determinations by atomic absorption. Samples were sealed in bags at the site and collected by commercial laboratory personal.

There are no known existing environmental liabilities to which the Long Valley gold project is subject.

Access

The Long Valley property is located about 7 miles to the east of the town of Mammoth Lakes and about 45 miles north of the town of Bishop, California. Both towns are connected by U.S. Highway 395, which passes a few miles west of the property. Access to the property from the highway is via a series of graded gravel roads. The property is in an undisturbed condition.

Climate and Infrastructure

The climate is semi-arid and moderate, with high temperatures in the summer generally in the 80 degrees Fahrenheit range and winter highs generally in the 30-40 degrees Fahrenheit range. Winter temperatures can be below 0 degrees Fahrenheit. Precipitation at the property probably totals about 20 to 25 inches per year, divided between winter snows and summer thunderstorms. The evaporation potential greatly exceeds the precipitation on an average annual basis, so the area is one with a negative water balance. Snow depths in winter are generally less than two feet on the property, and the overall climate should permit operations year around.

The Long Valley gold property is located a few miles to the east of the Sierra Nevada Mountains, at an elevation of about 7,200 feet, in an area of gently rolling terrain. The vegetation consists mostly of sagebrush and related shrubs and grasses with local areas of open pine forest. The topography in the area of the property will allow for the location of site facilities which may be required, including waste dumps, heap leach pads, plant sites, etc.

Lodging, supplies, and labor are available in either Mammoth Lakes or Bishop, with the area population exceeding 20,000 people. Groundwater has been encountered in many exploration drill holes at depths of 200 to 300 feet and should be available in sufficient quantities for processing. It is believed that adequate power is available in the area with no more than a few miles of additional powerline required to reach the property.

Vista Gold has no installations at or near the project.

Geology and Mineralization

The Long Valley gold project claims are contained entirely within the early Pleistocene-age Long Valley Caldera, which has been dated at about 760,000 years old. The caldera is an elongated east-west oval depression measuring some 10 miles by 20 miles and is related to eruption of the Bishop Tuff, which is covered by younger rocks within the caldera.

The Long Valley gold mineralization is located near the center of the caldera and is underlain by lithologic units related to the caldera formation and its subsequent resurgence. Associated with resurgent doming is a sequence of interbedded volcanoclastic sedimentary rocks which were deposited in a lacustrine setting within the caldera. These rocks consist of sediment (siltstones through conglomerates) and debris-flow deposits, with local deposits of intercalated silica sinter and rhyolite flows and dikes. All of these lithologies have been altered and/or mineralized to variable degrees. Intruding the generally flat-lying lake sediments are several rhyolite domes that have been dated from 200,000 to 300,000 years in age.

The north-south trending Hilton Creek fault zone appears to define the eastern limit of the resurgent dome within the central part of the Long Valley Caldera and extends outside the caldera to the south. Offset along this fault appears to be variable and suggests that fault activity along this zone may be episodic in nature.

Gold and silver mineralization at Long Valley appears to fall under the general classification of an epithermal, low sulfidation-type deposit. Several areas, termed the North, Central, South, Southeast and Hilton Creek zones, on the Long Valley property are mineralized with low grades of gold and silver. The mineralized zones are generally north-south trending, up to 8,000 feet in length with widths ranging from 500 feet to 1,500 feet. The tabular bodies are generally flat-lying or have a shallow easterly dip. Mineralization is typically from 50 to 200 feet thick and, in the South and Southeast zones, is exposed at or very near the surface. The top of the Hilton Creek zone is covered by 20 to 50 feet of alluvium. The majority of the mineralization discovered to date is located in the Hilton Creek zone.

Gold and silver mineralization is quite continuous throughout the zones and is well defined above a cut-off grade of 0.010 gold ounces per ton. Within the continuous zones of low-grade gold mineralization (above 0.010 gold ounces per ton) are numerous zones of higher grade mineralization above 0.050 gold ounces per ton, particularly in the Hilton Creek zone, which may relate to zones of enhanced structural preparation. Mineralized zones typically correlate with zones of more intense clay alteration or argillization and/or silicification.

In February 2003, Mine Development Associates of Reno, Nevada ("MDA"), completed an NI 43-101 third-party technical study for Vista Gold on the Long Valley gold project under the direction of Mr. Neil Prenn, an independent Qualified Person. The study is titled "Technical Report, Long Valley Project, Mono County, California, USA" and is dated February 20, 2003. It is available on SEDAR. Based on the report, under SEC Industry Guide 7 guidelines, mineralized material for the Long Valley gold project, above a cut-off grade of 0.010 gold ounces per ton, is estimated at 68,276,000 tons grading 0.018 gold ounces per ton.

At the same cut-off grade, under Canadian Institute of Mining, Metallurgy and Petroleum in the CIM Definition Standards, measured mineral resources are estimated at 26,596,900 tons grading 0.017 gold ounces per ton, indicated mineral resources are estimated at 41,678,800 tons grading 0.018 gold ounces per ton and inferred mineral resources are estimated at 32,914,000 tons grading 0.017 gold ounces per ton. **Cautionary Note to U.S. Investors: Mineral resources are not mineral reserves and there is no assurance that any mineral resources will ultimately be reclassified as proven or probable reserves. Mineral resources which are not mineral reserves do not have**

demonstrated economic viability. U.S. Investors should read the “Cautionary Note to U.S. Investors Regarding Reserve and Resource Estimates” above concerning the difference between “resources” and “reserves”.

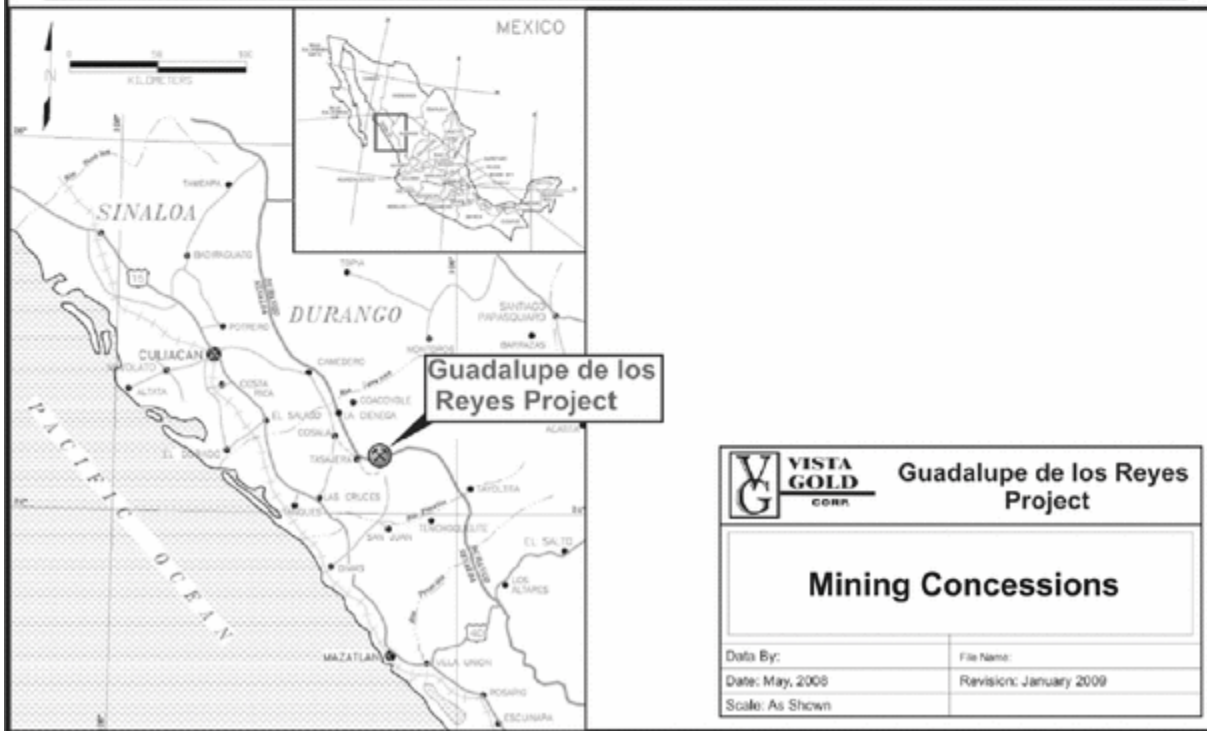
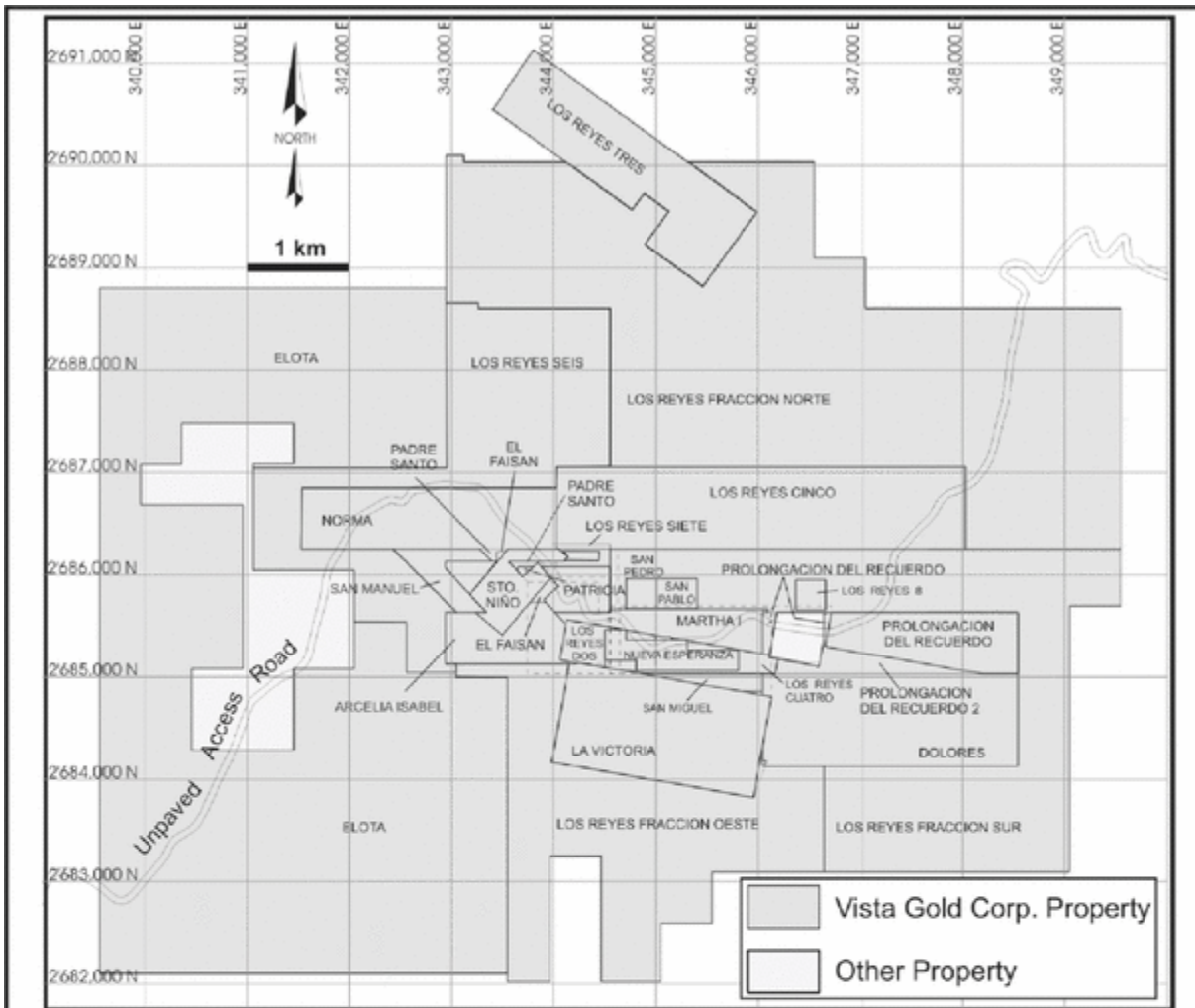
In January 2008, MDA completed an NI 43-101 third-party preliminary assessment for Vista Gold for the Long Valley gold project under the direction of Mr. Neil Prenn, an independent Qualified Person, utilizing standard industry software and estimation methodology. The study is titled “Technical Report, Preliminary Assessment, Long Valley Project, Mono County, California, USA” and is dated January 9, 2008. It is available on SEDAR. In undertaking the preliminary assessment, MDA considered the economic and technical parameters associated with development of mineral resources (mineralized material under SEC Industry Guide 7) within the restraints imposed by the state of California’s mining regulations that include a provision that all mined materials not removed from the property be replaced within the perimeter of the excavation. The preliminary assessment evaluated the potential economics of the project assuming that the mineral resources (mineralized material under SEC Industry Guide 7) were mined using open-pit mining methods and processed using heap-leach technology. The metallurgical test work and flowsheet were reviewed and approved for this study by Resource Development Inc. of Wheat Ridge, Colorado. After the pit material has been mined, the remaining waste materials would be backfilled into the pit along with the detoxified heap material. The potential development would produce an estimated 535,300 ounces of gold over an eight-year mine life. MDA estimated start-up capital at \$58.8 million and total project capital at \$61.8 million. However, this preliminary assessment uses mineral resources (mineralized material under SEC Industry Guide 7) and not mineral reserves. Mineral resources (mineralized material under SEC Industry Guide 7) that are not mineral reserves do not have demonstrated economic viability. A determination of mineral reserves would be necessary to demonstrate economic viability of the Long Valley gold project.

The Long Valley gold project has had a considerable amount of check assaying and, as such, MDA concluded that collecting duplicate samples for verification purposes was not warranted.

Data verification programs carried out by companies who previously worked on the Long Valley gold project included twinning RC drill holes with core holes to evaluate any differences between core and RC drilling, conducting systematic sample preparation and analysis QA/QC procedures, in particular, the practice comparing pulps, coarse rejects, and duplicate samples, and evaluating different assay methods and weights to validate gold analytical practices.

Guadalupe de los Reyes

Guadalupe de los Reyes is located in the western foothills of the Sierra Madre Occidental mountain range, approximately 68 miles by air (124 miles by road) north of the coastal city of Mazatlán, and 19 miles by road southeast of the town of Cosalá in Sinaloa State, Mexico. The property is held through Federal mining concessions totaling about 10,965 acres. A location map and table of mining concessions controlled by Vista follow.



Mining Concessions at Guadalupe de los Reyes Controlled by Vista Gold

<u>Concession Name</u>	<u>Serial Number</u>	<u>Surface Area (hectares)</u>	<u>Location Coordinates UTM (NAD27)</u>	<u>(INEGI Official Map No.)</u>	<u>Location Date</u>	<u>Expiration Date</u>	<u>Annual Fees (in Mexican Pesos)</u>
Gaitan Concessions							
La Victoria	210803	199.8708		G13C75	11/30/1999	11/29/2049	11,448.60
Prolongación del Recuerdo	210497	91.4591		G13C75	10/8/1999	10/7/2049	5,238.78
Prolongación del Recuerdo Dos	209397	26.6798		G13C75	4/9/1999	4/8/2049	3,055.38
Arcelia Isabel	193499	60.3723		G13C75	12/19/1991	12/18/2041	12,169.84
Dolores	180909	222.0385		G13C75	8/6/1987	8/5/2012	44,758.52
San Luis Concessions:							
Los Reyes 8	226037	9.0000		G13C75	11/15/2005	11/14/2055	130
Los Reyes Fracción Oeste	210703	476.9373		G13C75 and G13C85	11/18/1999	11/17/2049	56,278
Los Reyes Fracción Norte	212757	1,334.4710		G13C75	11/22/2000	10/7/2049	78,762
Los Reyes Fracción Sur	212758	598.0985		G13C75	11/22/2000	10/7/2049	35,302
Los Reyes Dos	214131	17.3662		G13C75	8/10/2001	8/9/2051	1,024
Los Reyes Tres	214302	197.0000		G13C75	6/9/2001	5/9/2051	11,628
Los Reyes Cinco	216632	319.9852		G13C75	5/17/2002	5/16/2052	18,886
Los Reyes Cuatro	217757	11.1640	Project centered	G13C75	8/13/2002	8/12/2052	328
Los Reyes Seis	225122	427.6609	at approximately	G13C75	7/22/2005	7/21/2055	6,064
Los Reyes Siete	225123	4.8206	345000E,	G13C75	7/22/2005	7/21/2055	70
San Miguel Concessions:			2686000N				
Norma	177858	150.0000		G13C75	4/29/1986	4/28/2011	30,237
San Manuel	188187	55.7681		G13C75	11/22/1990	11/21/2015	11,241.74
El Padre Santo	196148	50.0000		G13C75	7/16/1993	7/15/2043	10,079
Santo Niño	211513	44.0549		G13C75	5/31/2000	5/30/2050	2,523.46
El Faisan	211471	2.6113		G13C75	5/31/2000	3/30/2050	149.58

Patricia	212775	26.2182	G13C75	1/31/2001	1/30/2051	1,501.78
Martha I	213234	46.6801	G13C75	4/10/2001	4/9/2051	2,673.84
San Pedro	212753	9.0000	G13C75	11/22/2000	11/21/2050	515.52
San Pablo	212752	11.1980	G13C75	11/22/2000	11/21/2050	641.42
Nueva Esperanza	184912	33.0000	G13C75	12/6/1989	12/5/2039	6,652.14
San Miguel	185761	11.7455	G13C75	12/14/1989	12/13/2014	2,367.66

MPA Concessions:

Elota	To be determined when title is granted	To be determined when title is granted	Application for title was filed in January 2008
Totals		4,437.2003 hectares = 10,964.561 acres	353,726.26 Mexican Pesos Total in US\$ @ an exchange rate on 2/23/09 of US\$1.00 = MP\$14.81 = US\$23,958

On August 1, 2003, we executed an agreement to acquire a 100% interest in the Guadalupe de los Reyes gold project and a data package associated with the project and general area, for aggregate consideration of \$1.4 million and a 2% net smelter returns royalty. During a due diligence period prior to the signing of the purchase agreement, we made payments to the owner, Sr. Enrique Gaitan Maumejean, totaling \$100,000, and upon exercising our option to complete the purchase, paid an additional \$200,000. On August 4, 2004, we issued 138,428 Common Shares to Sr. Gaitan in satisfaction of the scheduled payment of \$500,000, which could be made in cash or Common Shares at our discretion. An additional \$500,000 in cash is to be paid in installments of \$100,000 on each of the second through sixth anniversaries of the signing of the formal agreement, with the outstanding balance becoming due upon commencement of commercial production. Payments of \$100,000 were made in each of 2005, 2006, 2007 and 2008. A 2% net smelter returns royalty will be paid to the previous owner and may be acquired by us at any time for \$1.0 million. We retain the right to terminate the agreement at any time.

On December 19, 2007, we announced that we had signed an agreement to acquire Grandcru's interest in two gold/silver mineral properties adjacent to our Guadalupe de los Reyes gold project in Sinaloa, México. The acquisition was completed on January 24, 2008. Under the terms of the agreement, we agreed to (a) pay Grandcru \$425,000 less any amounts payable in back taxes on the mining concessions, and pay a private investment group known as the San Miguel Group \$75,000, and (b) issue to Grandcru and the San Miguel Group, in aggregate, Common Shares of the Corporation with a value of \$1,000,000 (amounting to 213,503 Common Shares) on closing. In addition, we reached agreement with San Luis and with the San Miguel Group to complete the acquisition of their respective interests in the mining concessions at the same time as the closing occurs with Grandcru. We agreed to pay a 2% NSR on all minerals produced payable to the San Miguel Group on the mining concessions known as the San Miguel Concessions. We agreed to pay San Luis a 1% NSR on mining concessions known as the San Luis Concessions and the San Miguel Concessions, and 2% to 3% NSR depending on the gold price on the Corporation's mining concessions known as the Gaitán Concessions. At gold prices below \$499.99 per ounce, the royalty payable to San Luis on the Gaitan Concessions will be 2% and at or above \$500 per ounce, the royalty will be 3%. Certain of the San Luis Concessions are subject to a pre-existing underlying royalty of 3% NSR payable to Sanluis Corporación, S.A. de C.V.

There are no known existing environmental liabilities to which the Guadalupe de Los Reyes gold project is subject.

Access

Access to the Guadalupe de Los Reyes gold project area is from approximately midway (60 miles) on the toll road that connects the cities of Mazatlan, and Culiacan of the State of Sinaloa, and then to Cosala by a 34-mile, two-lane paved highway. An 18-mile dirt road connects Cosala with the project area. An airstrip for small aircraft is located near Cosala, with public and private service to the cities of Mazatlan, Culiacan and Durango.

Climate and Infrastructure

The Guadalupe de Los Reyes gold project is located in the western foothills of the Sierra Madre Occidental at elevations that vary from approximately 300 meters to 1,000 meters. The topography is moderate to rugged.

Climate in this area is arid to semi-arid with an average temperature of 72 – 79 degrees Fahrenheit and an average rainfall of approximately 1,000 millimeters, which occur mostly during the period of June to September in strong storm events that cause flooding along the river beds and frequent interruptions of the road to Cosalá. Moderate to dense vegetation of bushes and shrubs covers the hill slopes within the project area, in a transition zone that changes from the tropical vegetation towards the lower elevations and that of evergreens and other types of trees at higher topography. Most of the people living in the villages of the area depend on small scale farming, raising livestock, and growing fruit.

Year-round operations will be possible in this area.

The city of Cosalá constitutes the commercial center for the population living in small villages and scattered settlements located on “ejidos” (communal lands) around the Guadalupe de Los Reyes mining district. The road from Cosalá through Guadalupe de Los Reyes is the only regional access to the mountains to the east in this part of the Country. Cosalá offers retail, banking, medical, educational, hospital, and communications to the rest of the Country; however, major facilities are located in the cities of Mazatlán and Culiacán.

The nearest source of electric power is in Cosala. Sporadic underground mining of veins in the district occurred from the 1770s until the 1950s. Currently, the Company has no installations at or near the project.

The Company has not yet undertaken the studies to address the availability of water or assess potential areas for

project infrastructure such as tailings storage facility, heap leach pad, waste rock dumps or processing facilities. We are of the opinion that suitable source of water can be identified and that acceptable sites for project infrastructure can be located near the project.

The Guadalupe de Los Reyes mining district was discovered, according to local residents on December 12, 1772 (virgin of Guadalupe’s day) and claimed on January 6, 1773 (Wise men’s day, “día de los Reyes Magos”); hence the current name of Guadalupe de Los Reyes (previously Guadalupe Los Reyes).

Historical production for the Guadalupe de Los Reyes district from 1772 until 1990 has been estimated as approximately 319,000 ounces of gold and over 14,982,000 ounces of silver.

Geology and Mineralization

Guadalupe de los Reyes occurs in a late Cretaceous-to-Tertiary-age volcanic sequence of rocks. Gold and silver mineralization has been found along a series of northwesterly and west-northwesterly trending structural zones. Mineralization in these zones is typical of low-

sulfidation epithermal systems. Eight main target areas have been identified along three major structural zones. Several of these targets have bulk tonnage potential which may be amenable to open-pit mining, including the El Zapote, San Miguel, Guadalupe Mine, Tahonitas, and Noche Buena zones. The El Zapote target occurs in the Mariposa-El Zapote-Tahonitas structural zone on the western side of the project area and has been mapped for a distance of 2 miles. The El Zapote deposit is one of three deposits found along this structural zone, with the inactive underground Mariposa Mine 0.6 miles to the northwest and the Tahonitas prospect 0.3 miles to the southeast. The Guadalupe zone occurs as the northwest extension of the mineralized structures that were developed by underground mining along approximately 3,280 feet of the veins and to some 1,300 feet deep. The Guadalupe zone is found in the northeast portion of the area and has produced the majority of precious metals within the district. The San Miguel and Noche Buena zones are enclosed by the same northwestern trending structure in between the El Zapote-Mariposa and the Guadalupe structures.

In July 2003, a third-party NI 43-101 technical study was performed for Vista Gold by Pincock, Allen & Holt, of Denver, Colorado, under the direction of Mr. Mark G. Stevens, C.P.G., an independent Qualified Person, utilizing standard industry software and estimation methodology. The study is titled “Technical Report for the Guadalupe de Los Reyes Gold-Silver Project, State of Sinaloa, Western Mexico” and is dated July 17, 2003. The report is available on SEDAR. The study included assay data from 398 reverse circulation drill holes totaling 127,420 feet, with a total of 23,938 samples assayed and the drilling was performed by Northern Crown Mines Limited from 1993 to 1997. Approximately 80% of the project analytical samples were delivered to Bondar-Clegg de Mexico, S.A. de C.V. (“Bondar-Clegg”) in Hermosillo, México for sample preparation with assaying done at Bondar-Clegg’s assay laboratory in Vancouver, British Columbia. Approximately 20% of the sample preparation and assaying was conducted by SGS-XRAL laboratories in Hermosillo, México. Based on the report, under SEC Industry Guide 7 guidelines, mineralized material for the Guadalupe de los Reyes gold project, above a cut-off grade of 0.015 gold ounces per ton, is estimated at 11,090,000 tons grading 0.044 gold ounces per ton and 0.67 silver ounces per ton.

It is PAH’s opinion that the sample methods and analyses that have been used are representative of the deposits at the Guadalupe de Los Reyes gold project, and that the procedures were carried out according to accepted industry standards using accepted practices.

At the same cut-off grade, under Canadian Institute of Mining, Metallurgy and Petroleum in the CIM Definition Standards, indicated mineral resources are estimated at 6,996,000 tons grading .040 gold ounces per ton and 0.67 silver ounces per ton and inferred mineral resources are estimated at 4,233,000 tons grading 0.059 gold ounces per ton and 1.91 silver ounces per ton. These estimates are only for the ground controlled by Vista Gold prior to the acquisition of lands controlled by Grandcru. **Cautionary Note to U.S. Investors: Mineral resources are not mineral reserves and there is no assurance that any mineral resources will ultimately be reclassified as proven or probable reserves. Mineral resources which are not mineral reserves do not have demonstrated economic viability. U.S. Investors should read the “Cautionary Note to U.S. Investors Regarding Reserve and Resource Estimates” above concerning the difference between “resources” and “reserves”.**

The surface rights to the Guadalupe de Los Reyes gold project are held by the Ejido Tasajera, which owns most of the project’s land and recognizes individual rights to its members farming, living or using the land for their benefit. Other operators in the area have negotiated surface rights agreements with those individual holders and the Ejido Tasajera governing board. An important consideration is the traditional use of land, which in fact, recognizes that mining is the preferred use of the land in and around old mining workings.

According to Mr. Gaitán and by PAH’s experience within the region, there is a good working relationship with people of the Ejido Tasajera, since many of the inhabitants are necessarily contracted when work is carried out in the exploration or mining operations. No labor or access problems have been reported by other mining operators within the area.

To operate within the Laws and Regulations of México, we must negotiate the land rights before initiating development of any considerable mining operations in the project area. It should be established if any agreements between previous operators, Mr. Gaitán, and the Ejido Tasajera are still valid.

PART IV

ITEM 15. EXHIBITS AND FINANCIAL STATEMENT SCHEDULES.

Exhibits

The following exhibits are filed as part of this report:

Exhibit Number	Description
3.01	Articles of Continuation filed as Exhibit 2.01 to the Form 20-F for the period ended December 31, 1997 and incorporated herein by reference (File No. 1-9025)
3.02	By-Law No. 1 of Vista Gold filed as Schedule B to the Management Information and Proxy Circular as filed on Form 6-K as filed with the SEC on April 9, 1998 and incorporated herein by reference (File No. 1-9025)
3.03	Amended By-Law No. 1 of Vista Gold filed as Schedule D to the Management Information and Proxy Circular as filed with the SEC on April 7, 1999 and incorporated herein by reference (File No. 1-9025)
3.04	Articles of Arrangement of Vista Gold Corp., dated May 10, 2007 filed as Exhibit 3 to the Corporation's Current Report on Form 8-K, dated May 10, 2007 and incorporated herein by reference (File No. 1-9025)
4.01	Warrant Indenture dated September 23, 2005 between Vista Gold Corp. and Computershare Trust Company of Canada, as Trustee filed as Exhibit 4.1 to the Corporation's Form 10-Q for the quarter ended September 30, 2005 and incorporated herein by reference (File No. 1-9025)
4.02	Form of Broker Warrant dated September 23, 2005 issued by Vista Gold Corp. to Quest Securities Corporation filed as Exhibit 4.2 to the Corporation's Form 10-Q for the quarter ended September 30, 2005 and incorporated herein by reference (File No. 1-9025)
4.03	Warrant Indenture dated February 2, 2006 between Vista Gold Corp. and Computershare Trust Company of Canada, as Trustee filed as Exhibit 4.1 to the Corporation's Current Report on Form 8-K, dated February 2, 2006 and incorporated herein by reference (File No. 1-9025)
4.04	Form of Agent's Warrant Certificate, dated as of November 7, 2006 evidencing Agent Warrants issued by Vista Gold Corp. to Sprott Securities Inc. and to GMP Securities L.P. filed as Exhibit 4.1 to the Corporation's Form 10-Q for the quarter ended September 30, 2006 and incorporated herein by reference (File No. 1-9025)
4.05	Note Indenture, dated March 4, 2008, among Vista Gold Corp., Minera Paredones Amarillos S.A. de C.V., as guarantor, HSBC Bank USA, N.A., as trustee and HSBC México, S.A. De C.V., Institución de Banca Múltiple, Grupo Financiero HSBC, División Fiduciaria, as collateral agent filed as Exhibit 4.1 to the Corporation's Current Report on Form 8-K dated March 3, 2008 and incorporated herein by reference (File No. 1-9025)
10.01	Stock Option dated July 1, 1985, between Henry C. Crofoot, trustee, and incorporated herein by reference (File No. 1-9025)
10.02	Data Purchase, Production Payment Grant and Option to Purchase Production Payment Agreement dated August 1, 2003 between Vista Gold and Enrique Gaitan Maumejean filed as Exhibit 10.20 to the Corporation's Annual Report on Form 10-K for the year ended December 31, 2003 and incorporated herein by reference (File No. 1-9025)
10.03	Amendment Agreement dated January 14, 1988, among Henry C. Crofoot et al and Enrique Gaitan Maumejean filed as Exhibit 10.21 to Granges' Annual Report on Form 10-K for the year ended December 31, 2003 and incorporated herein by reference (File No. 1-9025)
10.04	Lewis Hycroft Agreement dated January 10, 1989, among Frank W. Lewis, Hycroft Lewis and Hycroft Resources-Development Inc. filed as Exhibit 10.16 to Granges' Annual Report on Form 10-K for the year ended December 31, 2004 and incorporated herein by reference (File No. 1-9025)
10.05	Employment Agreement dated June 1, 2004 between Vista Gold and Gregory G. Marlier filed as Exhibit 10.25 to the Form 10-K for the year ended December 31, 2004 and incorporated herein by reference (File No. 1-9025)
10.06	Employment Agreement effective as of January 1, 2005 between Vista Gold and Michael B. Richings filed as Exhibit 10.27 to the Form 10-K for the year ended December 31, 2005 and incorporated herein by reference (File No. 1-9025)

- 10.07 Third Amendment Agreement dated January 19, 2005, between Vista Gold Corp. and Luzon Minerals Ltd. filed as Exhibit 10.23 to the Form 10-K for the year ended December 31, 2005 and incorporated herein by reference (File No. 1-9025)
- 10.08 Stock Option Plan of Vista Gold dated November 1996 as amended in November 1998, May 2003, May 2005 and May 2006 filed as Schedule C to the Corporation's Commission Annual Report on April 3, 2006 and incorporated herein by reference (File No. 1-9025)
- 10.09 Share Purchase Agreement dated August 29, 2002 between Vista Gold and Viceroy Minerals Corporation filed as Exhibit 10.25 to the Corporation's Annual Report on Form 10-K for the year ended December 31, 2005 and incorporated herein by reference (File No. 1-9025)
- 10.10 Purchase Agreement dated October 7, 2002 between Vista Gold and Newmont Mining Corporation filed as Exhibit 10.26 to the Corporation's Annual Report on Form 10-K for the year ended December 31, 2005 and incorporated herein by reference (File No. 1-9025)
- 10.11 Venture Assignment Agreement dated May 9, 2005 between Vista Gold Corp. filed as Exhibit 10.27 to the Corporation's Annual Report on Form 10-K for the year ended December 31, 2005 and incorporated herein by reference (File No. 1-9025)
- 10.12 Assignment Agreement, dated May 9, 2005, between Continental Goldfields Limited and Vista Gold Corp. filed as Exhibit 10.28 to the Corporation's Annual Report on Form 10-K for the year ended December 31, 2005 and incorporated herein by reference (File No. 1-9025)
- 10.13 Assignment of Rights dated May 9, 2005, between ORT Limited and Vista Gold Corp. filed as Exhibit 10.29 to the Corporation's Annual Report on Form 10-K for the year ended December 31, 2005 and incorporated herein by reference (File No. 1-9025)
- 10.14 Option to Purchase Agreement dated July 18, 2005 between Vista Gold and Monex Exploration filed as Exhibit 10.1 to the Corporation's Annual Report on Form 8-K, dated July 18, 2005 and incorporated herein by reference (File No. 1-9025)
- 10.15 Purchase Agreement dated November 7, 2005 between Vista Gold Corp. and Luzon Minerals Ltd. filed as Exhibit 10.1 to the Corporation's Annual Report on Form 8-K, dated November 7, 2005 and incorporated herein by reference (File No. 1-9025)
- 10.16 Finder's Fee Agreement and each Purchaser as defined therein filed as Exhibit 10.1 to the Corporation's Current Report on Form 8-K, dated February 2, 2006 and incorporated herein by reference (File No. 1-9025)
- 10.17 Form of Subscription Agreement dated September 29, 2004, between Vista Gold and each Purchaser as defined therein filed as Exhibit 10.1 to the Corporation's Form 10-Q for the quarter ended September 30, 2004 and incorporated herein by reference (File No. 1-9025)
- 10.18 Agreement, dated March 1, 2006, among the Northern Territory of Australia, Vista Gold Australia Pty Ltd. and Vista Gold Corp. filed as Exhibit 10.24 to the Corporation's Annual Report on Form 8-K, dated February 28, 2006 and incorporated herein by reference (File No. 1-9025)
- 10.19 Employment Agreement dated June 1, 2004 between Vista Gold and Gregory G. Marlier filed as Exhibit 10.3 to the Corporation's Annual Report on Form 8-K, dated February 28, 2006 and incorporated herein by reference (File No. 1-9025)
- 10.20 Letter Agreement, dated April 12, 2005, between Prime Corporate Finance Pty Limited and Vista Gold Corp. filed as Exhibit 10.43 to the Corporation's Annual Report on Form 10-K for the year ended December 31, 2005 and incorporated herein by reference (File No. 1-9025)
- 10.21 Employment Agreement effective as of January 1, 2005 between Vista Gold and Michael B. Richings filed as Exhibit 10.1 to the Corporation's Annual Report on Form 8-K, dated July 6, 2006 and incorporated herein by reference (File No. 1-9025)
- 10.22 Amendment to Purchase Agreement, dated January 19, 2005, between Vista Gold Corp. filed as Exhibit 10.23 to the Corporation's Annual Report on Form 8-K for the SEC on August 16, 2006) and incorporated herein by reference (File No. 1-9025)
- 10.23 Deed of Option, dated October 28, 2004, between Weston Investments, Organic Resources, Vista Gold Corp., Salu Siwa and JCI Limited filed as Exhibit 10.24 to the Corporation's Annual Report on Form 8-K for the SEC on August 25, 2006) and incorporated herein by reference (File No. 1-9025)
- 10.24 Arrangement and Merger Agreement dated as of September 22, 2006, between Vista Gold Corp., Allied Nevada Gold Corp., Carl Pescio and JCI Limited filed as Exhibit 10.25 to the Corporation's Annual Report on Form 8-K for the year ended December 31, 2005 and incorporated herein by reference (File No. 1-9025)
- 10.25 Employment Agreement, dated as of September 22, 2006, between Vista Gold Corp., and JCI Limited filed as Exhibit 10.26 to the Corporation's Annual Report on Form 8-K for the year ended December 31, 2005 and incorporated herein by reference (File No. 1-9025)

10.26 Assignment Agency Agreement, dated as of October 30, 2006, among Vista Gold Corp., filed as Exhibit 10.27 to the Corporation's Annual Report on Form 8-K dated October 30, 2006 and incorporated herein by reference (File No. 1-9025)

- 10.27 Assignment Loan Agreement dated May 9, 2005, between Vista Gold Corp. filed as Exhibit 10.28 to the Corporation's Annual Report on Form 8-K dated December 22, 2006 and incorporated herein by reference (File No. 1-9025)
- 10.28 Assignment Agreement, dated May 9, 2005, between ORT Limited and Vista Gold Corp. filed as Exhibit 10.2 to the Corporation's Annual Report on Form 8-K dated December 22, 2006 and incorporated herein by reference (File No. 1-9025)
- 10.29 Purchase Letter Agreement dated July 18, 2005, between Vista Gold Corp. and Luzon Minerals Ltd. filed as Exhibit 10.1 to the Corporation's Current Report on Form 8-K dated July 18, 2005 and incorporated herein by reference (File No. 1-9025)
- 10.30 Fee Letter Agreement dated March 13, 2007, between Vista Gold Corp. and Luzon Minerals Ltd. filed as Exhibit 10.53 to the Corporation's Annual Report on Form 10-K for the year ended December 31, 2006 and incorporated herein by reference (File No. 1-9025)
- 10.31 Amendment to Arrangement and Merger Agreement by and among Vista Gold Corp., Allied Nevada Gold Corp., Carl Pescio and Janet Pescio, dated May 8, 2007 filed as Exhibit 10.1 to the Corporation's Current Report on Form 8-K, dated May 10, 2007 and incorporated herein by reference (File No. 1-9025)
- 10.32 Letter Agreement dated November 20, 2007, between Vista Gold Corp. and Luzon Minerals Ltd. filed as Exhibit 10.1 to the Corporation's Current Report on Form 8-K, dated November 20, 2007 and incorporated herein by reference (File No. 1-9025)
- 10.33 Agreement dated December 19, 2007, between Grandcru Resource Corporation and Vista Gold Corp. filed as Exhibit (use corresponding Exhibit #) to the Corporation's Annual Report on Form 10-K for the year ended December 31, 2007 and incorporated herein by reference (File No. 1-9025)
- 10.34 Purchase and Termination Agreement dated December 19, 2007, among (i) Klaus Genssler, Genssler Investment Partnership, LLP, Douglas D. Foote and Synergex Group Limited Partnership, (ii) Grandcru Resources Corporation, (iii) Minera Paredones Amarillos, S.A. de C.V. and (iv) Vista Gold Corp. filed as Exhibit (use corresponding Exhibit #) to the Corporation's Annual Report on Form 10-K for the year ended December 31, 2007 and incorporated herein by reference (File No. 1-9025)
- 10.35 Termination and Purchase Agreement dated December 21, 2007, among (i) Goldcorp Inc., Luismin S.A. de C.V. and Desarrollos Mineros San Luis, S.A. de C.V., (ii) Grandcru Resources Corporation, (iii) Minera Paredones Amarillos, S.A. de C.V. and (iv) Vista Gold Corp. filed as Exhibit (use corresponding Exhibit #) to the Corporation's Annual Report on Form 10-K for the year ended December 31, 2007 and incorporated herein by reference (File No. 1-9025)
- 10.36 Asset Sale Agreement dated January 4, 2008, among Vista Gold Corp., Minera Paredones Amarillos, S.A. de C.V., Del Norte Company, Ltd. and A.M. King Industries, Inc. filed as Exhibit 10.1 to the Corporation's Current Report on Form 8-K, dated January 2, 2008, and incorporated herein by reference (File No. 1-9025)
- 10.37 Agency Agreement, dated March 4, 2008, between Vista Gold Corp. and Casimir Capital L.P. filed as Exhibit 10.1 to the Corporation's Current Report on Form 8-K dated March 3, 2008 and incorporated herein by reference (File No. 1-9025)
- 10.38 Form of Subscription Agreement dated March 4, 2008, between Vista Gold Corp. and each Subscriber as defined therein filed as Exhibit 10.2 to the Corporation's Current Report on Form 8-K dated March 3, 2008 and incorporated herein by reference (File No. 1-9025)
- 10.39 Purchase and Sale Agreement dated March 4, 2008, among Vista Gold Corp., Vista Gold (Antigua) Corp. and Republic Gold Limited ACN 106399311, filed as Exhibit 10.1 to the Corporation's Current Report on Form 8-K dated April 4, 2008 and incorporated herein by reference (File No. 1-9025)
- 21 Subsidiaries of the Corporation, filed as Exhibit 21 to the Corporation's Annual Report on Form 10-K dated March 13, 2009 and incorporated herein by reference (File No. 1-9025)
- 23.1 Consent of PricewaterhouseCoopers LLP, independent auditors, filed as Exhibit 23.1 to the Corporation's Annual Report on Form 10-K dated March 13, 2009 and incorporated herein by reference (File No. 1-9025)
- 23.2 Consent of SRK Consulting (US), Inc., filed as Exhibit 23.2 to the Corporation's Annual Report on Form 10-K dated March 13, 2009 and incorporated herein by reference (File No. 1-9025)
- 23.3 Consent of Golder Associates, Inc. filed as Exhibit 23.3 to the Corporation's Annual Report on Form 10-K dated March 13, 2009 and incorporated herein by reference (File No. 1-9025)

- 23.4 Consent of Gustavson Associates, LLC
- 23.5 Consent of Mine Development Associates
- 23.6 Consent of MWH Australia Pty Ltd filed as Exhibit 23.6 to the Corporation' s Annual Report on Form 10-K dated March 13, 2009 and incorporated herein by reference (File No. 1-9025)
- 23.7 Consent of MWH Americas Inc. filed as Exhibit 23.7 to the Corporation' s Annual Report on Form 10-K dated March 13, 2009 and incorporated herein by reference (File No. 1-9025)
- 23.8 Consent of Pincock, Allen & Holt

- 23.9 Consent of Tetra Tech, Inc. filed as Exhibit 23.9 to the Corporation' s Annual Report on Form 10-K dated March 13, 2009 and incorporated herein by reference (File No. 1-9025)
- 23.10 Consent of Resource Development, Inc. filed as Exhibit 23.10 to the Corporation' s Annual Report on Form 10-K dated March 13, 2009 and incorporated herein by reference (File No. 1-9025)
- 24 Powers of Attorney, filed as Exhibit 24 to the Corporation' s Annual Report on Form 10-K dated March 13, 2009 and incorporated herein by reference (File No. 1-9025)
- 31.1 Certification of Chief Executive Officer pursuant to Rule 13a-14(a) under the *Securities Exchange Act of 1934*, as amended
- 31.2 Certification of Chief Financial Officer pursuant to Rule 13a-14(a) under the *Securities Exchange Act of 1934*, as amended
- 32.1 Certification of Chief Executive Officer pursuant to 18 U.S.C. Section 1350, as adopted pursuant to Section 906 of the *Sarbanes-Oxley Act of 2002*
- 32.2 Certification of Chief Financial Officer pursuant to 18 U.S.C. Section 1350, as adopted pursuant to Section 906 of the *Sarbanes-Oxley Act of 2002*

SIGNATURES

Pursuant to the requirements of Section 13 or 15(d) of the *Securities Exchange Act of 1934*, the registrant has duly caused this report to be signed on its behalf by the undersigned, thereunto duly authorized.

VISTA GOLD CORP.

(Registrant)

Dated: April 15, 2009

By: /s/ Michael B. Richings

Michael B. Richings,
Executive Chairman and Chief Executive Officer

Dated: April 15, 2009

By: /s/ Gregory G. Marlier

Gregory G. Marlier
Chief Financial Officer

EXHIBIT INDEX

Exhibit Number	Description
23.4	Consent of Gustavson Associates, LLC
23.5	Consent of Mine Development Associates

- 23.8 Consent of Pincock, Allen & Holt
 - 31.1 Certification of Chief Executive Officer pursuant to Rule 13a-14(a) under the *Securities Exchange Act of 1934*, as amended
 - 31.2 Certification of Chief Financial Officer pursuant to Rule 13a-14(a) under the *Securities Exchange Act of 1934*, as amended
 - 32.1 Certification of Chief Executive Officer pursuant to 18 U.S.C. Section 1350, as adopted pursuant to Section 906 of the *Sarbanes-Oxley Act of 2002*
 - 32.2 Certification of Chief Financial Officer pursuant to 18 U.S.C. Section 1350, as adopted pursuant to Section 906 of the *Sarbanes-Oxley Act of 2002*
-



GUSTAVSON ASSOCIATES
GEOLOGISTS • ENGINEERS • APPRAISERS

CONSENT OF GUSTAVSON ASSOCIATES, LLC

The undersigned, Gustavson Associates, LLC, hereby states as follows:

Our firm assisted with the “Report NI 43-101 Technical Report On The Mt. Todd Gold Project, Northern Territory (*sic*), Australia,” the “Preliminary Economic Assessment, Mt. Todd Gold Project, Northern Territory, Australia,” the “Report NI 43-101, Technical Report on the Awak Mas Gold Project, Sulawesi, Indonesia” and the “Preliminary Assessment, Awak Mas Gold Project, Sulawesi, Indonesia” (collectively, the “Technical Reports”) for Vista Gold Corp. (the “Company”), portions of which are summarized in this Annual Report on Form 10-K/A for the year ended December 31, 2008 (the “Form 10-K/A”).

We hereby consent to the incorporation by reference in the Registration Statements on Form S-3 (Nos. 333-136980 and 333-132975) and in the related Prospectuses, and in the Registration Statements on Form S-8 (Nos. 333-105621, 333-134767 and 333-153019) of the Company of the summary information concerning the Technical Reports, including the reference to our firm included with such information, as set forth above in the Form 10-K/A.

By: /s/ William J Crawl

Name: William J Crawl

Title: Vice President, Mining

Date: April 15, 2009

5757 Central Ave Suite D Boulder, CO 80301 USA +1 (303) 443-2209 FAX +1 (303) 443-3156

Mining Office: 274 Union Blvd., Suite 450, Lakewood, CO 80228 USA +1 (720) 407-4062 FAX +1 (720) 407-4067

<http://www.gustavson.com>

gustavson@gustavson.com



MINE DEVELOPMENT ASSOCIATES
MINE ENGINEERING SERVICES

CONSENT OF MINE DEVELOPMENT ASSOCIATES

The undersigned, Mine Development Associates, hereby states as follows:

Our firm assisted with the “Feasibility Study, NI 43-101 Technical Report, Vista Gold Corp., Paredones Amarillos Gold Project, Baja California Sur, Mexico,” the “Technical Report, Long Valley Project, Mono County, California, USA,” and the “Technical Report, Preliminary Assessment, Long Valley Project, Mono County, California, USA” (collectively, the “Technical Reports”) for Vista Gold Corp. (the “Company”), portions of which are summarized in this Annual Report on Form 10-K/A for the year ended December 31, 2008 (the “Form 10-K/A”).

We hereby consent to the incorporation by reference in this Registration Statements on Form S-3 (Nos. 333-136980 and 333-132975) and in the related Prospectuses, and in the Registration Statements on Form S-8 (Nos. 333-105621, 333-134767 and 333-153019) of the Company of the summary information concerning the Technical Reports, including the reference to our firm included with such information, as set forth above in the Form 10-K/A.

By: /s/ Neil B. Prenn, P.Eng.

Name: Neil B. Prenn, P.Eng.

Title: President

Date: April 15, 2009

775-856-5700

210 South Rock Blvd.
Reno, Nevada 89502
FAX: 775-856-6053



165 South Union Boulevard, Suite 950
Lakewood, Colorado 80228-2226

303-986-6950
Fax 303-987-8907

www.pincock.com

CONSENT OF PINCOCK, ALLEN & HOLT

The undersigned, Pincock, Allen & Holt, hereby states as follows:

Our firm assisted with the “Yellow Pine Project, Idaho, USA, Technical Report,” the “CNI 43-101 Technical Report, Preliminary Assessment of the Yellow Pine Project, Yellow Pine, Idaho” and the “Technical Report for the Guadalupe de Los Reyes Gold-Silver Project, State of Sinaloa, Western Mexico” (collectively, the “Technical Reports”) for Vista Gold Corp. (the “Company”), portions of which are summarized in this Annual Report on Form 10-K/A for the year ended December 31, 2008 (the “Form 10-K/A”).

We hereby consent to the incorporation by reference in the Registration Statements on Form S-3 (Nos. 333-136980 and 333-132975) and in the related Prospectuses, and in the Registration Statements on Form S-8 (Nos. 333-105621, 333-134767 and 333-153019) of the Company of the summary information concerning the Technical Reports, including the reference to our firm included with such information, as set forth above in the Form 10-K/A.

Dated this 15th day of April 2009.

PINCOCK, ALLEN & HOLT

BARTON G. STONE, C.P.G.
Certified Professional Geologist

CERTIFICATION

I, Michael B. Richings, certify that:

1. I have reviewed this annual report on Form 10-K/A of Vista Gold Corp.;
2. Based on my knowledge, this report does not contain any untrue statement of a material fact or omit to state a material fact necessary to make the statements made, in light of the circumstances under which such statements were made, not misleading with respect to the period covered by this report;
3. Based on my knowledge, the financial statements, and other financial information included in this report, fairly present in all material respects the financial condition, results of operations and cash flows of the registrant as of, and for, the periods presented in this report;
4. The registrant' s other certifying officer and I are responsible for establishing and maintaining disclosure controls and procedures (as defined in Exchange Act Rules 13a-15(e) and 15d-15(e)) and internal control over financial reporting (as defined in Exchange Act Rules 13a-15(f) and 15d-15(f)) for the registrant and have:
 - (a) Designed such disclosure controls and procedures, or caused such disclosure controls and procedures to be designed under our supervision, to ensure that material information relating to the registrant, including its consolidated subsidiaries, is made known to us by others within those entities, particularly during the period in which this report is being prepared;
 - (b) Designed such internal control over financial reporting, or caused such internal control over financial reporting to be designed under our supervision, to provide reasonable assurance regarding the reliability of financial reporting and the preparation of financial statements for external purposes in accordance with generally accepted accounting principles;
 - (c) Evaluated the effectiveness of the registrant' s disclosure controls and procedures and presented in this report our conclusions about the effectiveness of the disclosure controls and procedures, as of the end of the period covered by this report based on such evaluation; and
 - (d) Disclosed in this report any change in the registrant' s internal control over financial reporting that occurred during the registrant' s most recent fiscal quarter (the registrant' s fourth fiscal quarter in the case of an annual report) that has materially affected, or is reasonably likely to materially affect, the registrant' s internal control over financial reporting; and
5. The registrant' s other certifying officer and I have disclosed, based on our most recent evaluation of internal control over financial reporting, to the registrant' s auditors and the audit committee of the registrant' s board of directors (or persons performing the equivalent functions):
 - (a) All significant deficiencies and material weaknesses in the design or operation of internal control over financial reporting which are reasonably likely to adversely affect the registrant' s ability to record, process, summarize and report financial information; and
 - (b) Any fraud, whether or not material, that involves management or other employees who have a significant role in the registrant' s internal control over financial reporting.

Dated: April 15, 2009

/s/ Michael B. Richings

Michael B. Richings,
Executive Chairman and Chief Executive Officer

CERTIFICATION

I, Gregory G. Marlier, certify that:

1. I have reviewed this annual report on Form 10-K/A of Vista Gold Corp.;
2. Based on my knowledge, this report does not contain any untrue statement of a material fact or omit to state a material fact necessary to make the statements made, in light of the circumstances under which such statements were made, not misleading with respect to the period covered by this report;
3. Based on my knowledge, the financial statements, and other financial information included in this report, fairly present in all material respects the financial condition, results of operations and cash flows of the registrant as of, and for, the periods presented in this report;
4. The registrant' s other certifying officer and I are responsible for establishing and maintaining disclosure controls and procedures (as defined in Exchange Act Rules 13a-15(e) and 15d-15(e)) and internal control over financial reporting (as defined in Exchange Act Rules 13a-15(f) and 15d-15(f)) for the registrant and have:
 - (a) Designed such disclosure controls and procedures, or caused such disclosure controls and procedures to be designed under our supervision, to ensure that material information relating to the registrant, including its consolidated subsidiaries, is made known to us by others within those entities, particularly during the period in which this report is being prepared;
 - (b) Designed such internal control over financial reporting, or caused such internal control over financial reporting to be designed under our supervision, to provide reasonable assurance regarding the reliability of financial reporting and the preparation of financial statements for external purposes in accordance with generally accepted accounting principles;
 - (c) Evaluated the effectiveness of the registrant' s disclosure controls and procedures and presented in this report our conclusions about the effectiveness of the disclosure controls and procedures, as of the end of the period covered by this report based on such evaluation; and
 - (d) Disclosed in this report any change in the registrant' s internal control over financial reporting that occurred during the registrant' s most recent fiscal quarter (the registrant' s fourth fiscal quarter in the case of an annual report) that has materially affected, or is reasonably likely to materially affect, the registrant' s internal control over financial reporting; and
5. The registrant' s other certifying officer and I have disclosed, based on our most recent evaluation of internal control over financial reporting, to the registrant' s auditors and the audit committee of the registrant' s board of directors (or persons performing the equivalent functions):
 - (a) All significant deficiencies and material weaknesses in the design or operation of internal control over financial reporting which are reasonably likely to adversely affect the registrant' s ability to record, process, summarize and report financial information; and
 - (b) Any fraud, whether or not material, that involves management or other employees who have a significant role in the registrant' s internal control over financial reporting.

Dated: April 15, 2009

/s/ Gregory G. Marlier

Gregory G. Marlier
Chief Financial Officer

**STATEMENT PURSUANT TO
18 U.S.C. SECTION 1350,
AS ADOPTED PURSUANT TO
SECTION 906 OF THE SARBANES-OXLEY ACT OF 2002**

In connection with the Annual Report of Vista Gold Corp. (the "Corporation") on Form 10-K/A for the period ended December 31, 2008, as filed with the Securities and Exchange Commission on the date hereof (the "Report"), the undersigned officer of the Corporation does hereby certify, pursuant to 18 U.S.C. Section 1350, as adopted pursuant to Section 906 of the Sarbanes-Oxley Act of 2002, that:

- (1) The Report fully complies with the requirements of Section 13(a) or 15(d) of the Securities Exchange Act of 1934, as amended; and
- (2) The information contained in the Report fairly presents, in all material respects, the financial condition and results of operations of the Corporation.

Dated: April 15, 2009

/s/ Michael B. Richings

Michael B. Richings,
Executive Chairman and Chief Executive Officer

A signed original of this written statement required by Section 906, or other document authenticating, acknowledging, or otherwise adopting the signature that appears in typed form within the electronic version of this written statement required by Section 906, has been provided to the Corporation and will be retained by the Corporation and furnished to the Securities and Exchange Commission or its staff upon request.

**STATEMENT PURSUANT TO
18 U.S.C. SECTION 1350,
AS ADOPTED PURSUANT TO
SECTION 906 OF THE SARBANES-OXLEY ACT OF 2002**

In connection with the Annual Report of Vista Gold Corp. (the "Corporation") on Form 10-K/A for the period ended December 31, 2008, as filed with the Securities and Exchange Commission on the date hereof (the "Report"), the undersigned officer of the Corporation does hereby certify, pursuant to 18 U.S.C. Section 1350, as adopted pursuant to Section 906 of the Sarbanes-Oxley Act of 2002, that:

- (1) The Report fully complies with the requirements of Section 13(a) or 15(d) of the Securities Exchange Act of 1934, as amended; and
- (2) The information contained in the Report fairly presents, in all material respects, the financial condition and results of operations of the Corporation.

Dated: April 15, 2009

/s/ Gregory G. Marlier

Gregory G. Marlier,
Chief Financial Officer

A signed original of this written statement required by Section 906, or other document authenticating, acknowledging, or otherwise adopting the signature that appears in typed form within the electronic version of this written statement required by Section 906, has been provided to the Corporation and will be retained by the Corporation and furnished to the Securities and Exchange Commission or its staff upon request.
